

Mercedes-Benz Truck Genuine Accessories and Retrofitting

Mercedes-Benz
Trucks you can trust



Genuine Mercedes down to the last detail.

Add the finishing touches to your vehicle. Our practical and fascinating solutions for improved comfort, appearance, safety and economy enable you to customize your vehicle to suit your exact requirements. We have high standards in terms of quality, longevity and achieving an excellent price-performance ratio.

Unique and unmistakable: Our comprehensive range of product tests ensure that each Mercedes-Benz Genuine Accessory meets our high quality standards. From electromagnetic compatibility through summer and winter testing to the crash test – only accessory products that comply with the required tests also meet requirements in practice. And only then do they meet yours, too.

The overall accessories catalog provides a comprehensive overview of the complete product range for Mercedes-Benz Genuine Accessories. The individual categories of interior, exterior and electrical components provide a clearly-arranged structure to the offer. The catalog gives you a simple and comfortable option to gather information on the complete product range for Mercedes-Benz Genuine Accessories and retrofits.

Our sophisticated logistics ensure every Mercedes-Benz accessory product is available for you as quickly as possible at your dealer – and, if you wish, including installation.

We use the following model series abbreviations in the catalog:

| | |
|-------|--|
| Ac1: | Actros 1, manufacture years 1996 – 2002, Model designations 950 – 954 |
| Ac2: | Actros 2, manufacture years 2002 – 2008 Model designations 930 – 934, Code XV7 |
| Ac3: | Actros 3, manufacture year from 2008, Model designations 930 – 934, Code XV6 |
| Ac4: | Actros new, manufacture year from 2011, Model designations 963, Code V1A |
| An: | Antos, manufacture year from 2012, Model designations 963, Code V1C |
| Ar: | Arocs, manufacture year from 2013, Model Designation 964 |
| At1: | Atego 1, manufacture year 1998 – 2004, Model designations 970 – 976 |
| At2: | Atego 2, manufacture year 2004 – 2010, Model designations 970 – 976, Code XV1 |
| At3: | Atego 2 facelift, manufacture year 2010 – 2013, Model designations 970 – 976, Code XV8 |
| At4: | Atego new, manufacture year from 2013, Model Designation 967 |
| Ax1: | Axor 1, manufacture year from 2001 |
| Ax2: | Axor 2, manufacture year from 2004 |
| Ax3: | Axor 3, manufacture year from 2010 |
| Eco: | Econic, up to manufacture year 2013, Model Designation 957 |
| Econ: | Econic, manufacture year from 2014, Model Designation 956 |



Every product at a glance.

Discover our new accessory articles and retrofits for your truck.



Content

| | |
|---------------|-----|
| Product tests | 4-5 |
|---------------|-----|

| | |
|----------|------|
| Exterior | 8-49 |
|----------|------|



| | |
|----------|--------|
| Interior | 50-102 |
|----------|--------|



| | |
|-----------------------|---------|
| Electrics/electronics | 103-135 |
|-----------------------|---------|



Electromagnetic compatibility testing

Comprehensive product tests are standard for Mercedes-Benz Genuine Accessories.

With Mercedes-Benz Genuine Accessories, tested quality is coming onto the road: Each product must show in tough tests that it will withstand the daily demands in and on a truck. And this is already happening during new car development – something only Mercedes-Benz can offer you. Only then will the products come on the market as Mercedes-Benz Genuine Accessories. This is why you can always rely on high quality and longevity, which makes your work more pleasant, more comfortable and more efficient. On the following pages, we will present you three of our product tests in further detail – and the great advantages you are benefiting from.

The electromagnetic compatibility test: For interference-free working and communicating.

Electronic devices are thoroughly tested for electromagnetic compatibility (EMC). Two criteria are tested here: Interference immunity and interference emission. On the one hand, this ensures the interference-free operation of the accessory product. On the other hand, you can trust that there will be no interferences in electronic devices or in radio frequencies due to Mercedes-Benz Genuine Accessories.

Your advantages at a glance:

- Interference-free operation of the electronic devices in the vehicle
- More range for your radio – enjoy longer, undisturbed reception of your favorite station
- Interference-free operation of vehicle-internal control units and systems



EMC test in a laboratory that is especially shielded against external electromagnetic interferences.

Product tests

Durability test

The interaction of accessories and vehicle is tested in the durability test. Hydropulse test stands and rough road tracks simulate pot holes and road conditions found worldwide. Various types of work environments are simulated by varying vehicle speed and vehicle load. Therefore, the accessory product is tested over a longer period of time under the load conditions found in real life. In the crash test, the Mercedes-Benz Genuine Accessories are subjected to the hardest test. This test analyzes the behavior during an accident – passive safety must be ensured even under these extreme conditions.

Your advantages at a glance:

- Longevity thanks to sturdy and high-quality material
- Accessories that are optimally geared towards the vehicle
- Tested and approved for the demands of everyday life



Bending and breaking test: Roof lamp brackets in the crash test.



Hydropulse test stand for simulating pot holes and rough road conditions.

Winter and summer testing

Winter and summer pose extreme challenges for the vehicle and material. This is why Mercedes-Benz Genuine Accessories must ensure optimum function at all times in strict trials at temperatures of -40°C to $+40^{\circ}\text{C}$. Winter testing is performed in Scandinavia and summer testing is performed in Southern Europe, in each case on special vehicle testing sites and circuits. In addition to different road surfaces, vehicles must withstand inclines with up to the maximum vehicle load as well as endurance tests.

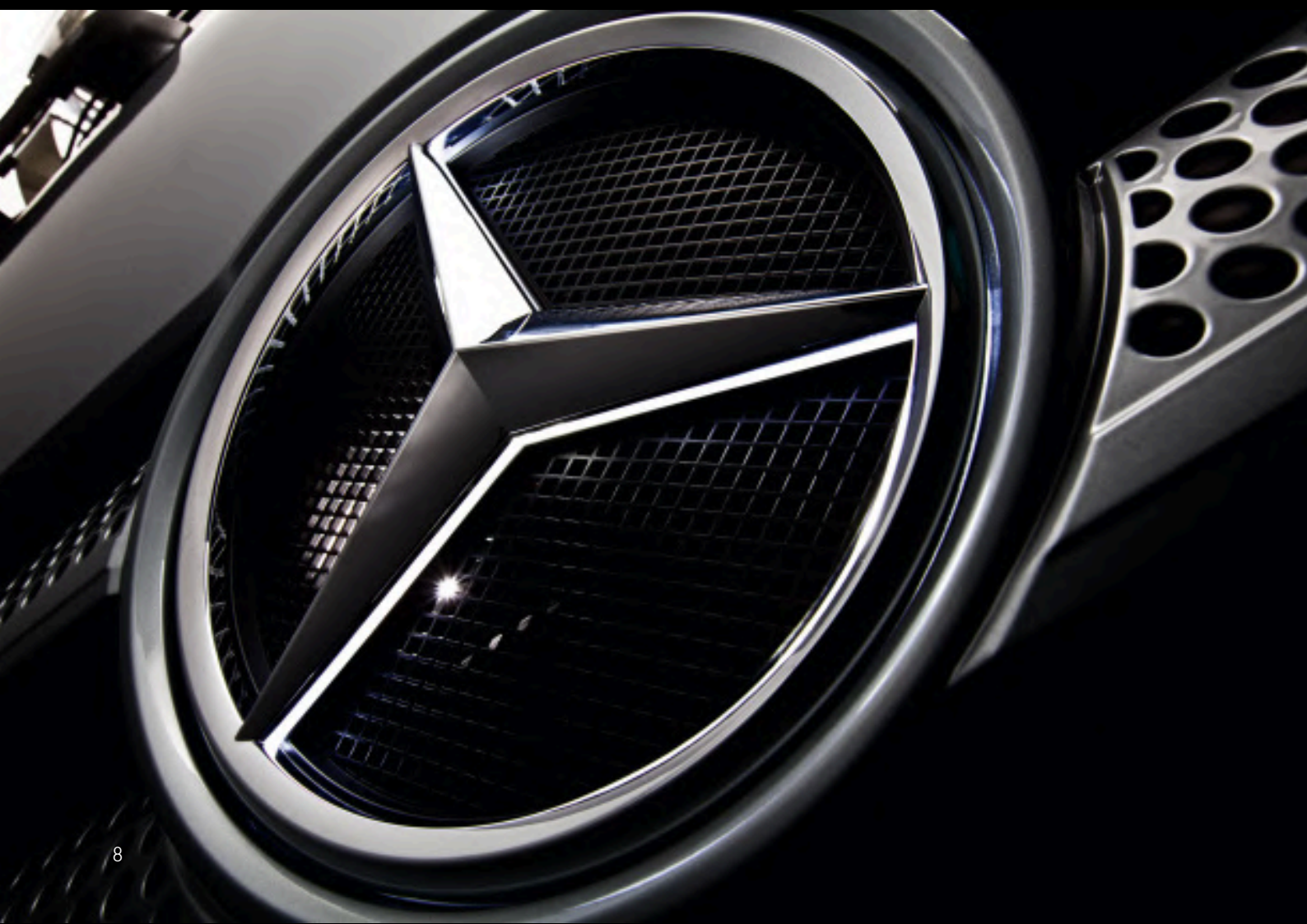
Your advantages at a glance:

- Optimum function even at extreme temperatures
- Long service life even at maximum vehicle loads
- A consistently high quality is ensured under all conditions



Test vehicles of the Mercedes-Benz winter testing in Scandinavia.

The exterior.



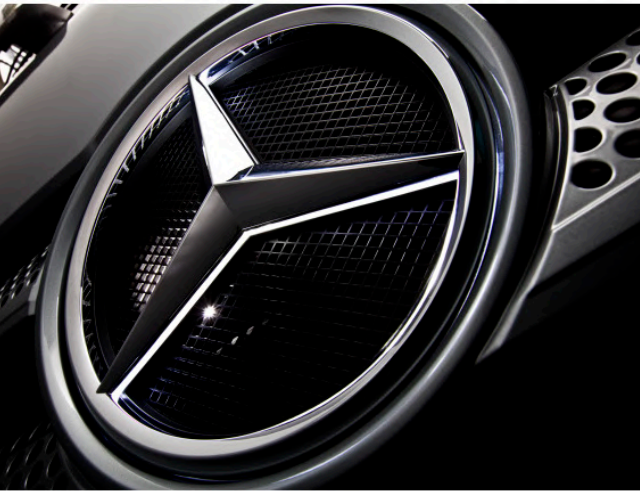
Genuinely unique.

Whether for long-distance haulage, in heavy-duty distribution haulage or construction-site use – Mercedes-Benz Genuine Accessories for the exterior will make your truck genuinely unique. High material quality and extensive tests ensure that even the toughest usage conditions can be brilliantly mastered.



Exterior

Illuminated Mercedes star



Shining detail: Activate the Mercedes star with white backlighting at the touch of a button for an even more sensational look.

| | |
|------------------|--|
| Product benefits | Contribution to independent design and individualization of the vehicle |
| Technical data | LED lighting with an output of 1.9 Watts and lens, power consumption of approx. 82 mA |
| Package contents | Installation kit for retrofitting comprises star incl. LED, switch, cable set and mounting material |
| Note | Please be sure to observe the operator's manual of the vehicle! The Mercedes star is exclusively permitted for use on private premises. Use in public road traffic and on public parking spaces is not permitted |

| Article designation | Vehicle | Part number |
|---|-------------|-------------|
| Illuminated Mercedes star incl. installation kit for cab width 2.5 m (code F2H) | Ac4, Ar | B6 683 0036 |
| Illuminated Mercedes star incl. installation kit for cab width 2.3 m (code F2G) | Ac4, An, Ar | B6 683 0041 |



B6 683 0036, B6 683 0041

Illuminated Mercedes star



B6 753 0170



B6 753 0170

Extra highlight for your Actros: Using optical fibers and LED technology you can make the central star of the radiator grille light up (Retrofitting Code FA6).

| | |
|-------------------------|---|
| Product benefits | Contribution to independent design and individualization of the vehicle |
| Technical data | LED lighting with an output of 1.9 Watts and lens, power consumption of approx. 82 mA |
| Package contents | Installation kit for retrofitting comprises star incl. LED, switch, cable set and mounting material |
| Note | Please also note the description on the illuminated Mercedes star in the operator's manual |

| Article designation | Vehicle | Part number |
|--------------------------------|----------|-------------|
| For S, M, and L cabs | Ac3, Ac2 | B6 753 0169 |
| For MegaSpace | Ac3, Ac2 | B6 753 0170 |
| Cable set for illuminated star | Ac3 | B6 753 0168 |

LED position lamps



B6 683 0020

Perfect vehicle appearance with LED technology for improved perception and switching on faster.

| | |
|-------------------------|---|
| Product benefits | Long life time (up to 10,000 hours); wear and maintenance free; high energy efficiency (approx. two to three times higher than bulbs; with ECE type approval) |
| Technical data | 24 V/0.5 W; power consumption = approx. 20 mA |
| Installation | Simple exchange of the standard lamps |
| Package contents | Set, consisting of two position lamps with two white light-emitting diodes each |

| Article designation | Vehicle | Part number |
|---------------------|----------|-------------|
| LED position lamps | Ac3, Ac2 | B6 683 0020 |

LED daytime running lights



B6 683 0031

Lower maintenance, less non-operational time, increased safety: The LED daytime running lamps replace the use of low beams during daylight hours.

| | |
|------------------|--|
| Product benefits | Long service life (over 10,000 hours); low energy consumption (approx. 10 W) |
| Function | Automatically activated when the engine is started and deactivated when the standing lights or low beams are switched on |
| Color | White |
| Package contents | 1 pair for driver and front passenger side |
| Property | The LED spots are arranged in two separate strips of five each next to the front fog lamps, the cover is made of glass |
| Note | Prerequisite, code L1H (Halogen front fog lamp), not for codes F2L, F2M, L1B, L1N, VIC, daytime running lights are disabled in the main headlamp |



B6 683 0024

| LED daytime running lights (code L1I) | | |
|--|---------|-------------|
| Article designation | Vehicle | Part number |
| LED daytime running lights | Ac4 | B6 683 0031 |
| Cable set for LED daytime running lights | Ac4 | B6 683 0025 |

| LED daytime running lights (code LG7) | | |
|--|---------------------------------|-------------|
| Note | For vehicles with front spoiler | |
| Article designation | Vehicle | Part number |
| LED daytime running lights | Ac3 | B6 683 0024 |
| Cable set for LED daytime running lights | Ac3 | B6 683 0025 |

Chrome applications, door



B6 752 0138

Sharpen the profile of your vehicle: Chrome applications for the driver and front passenger side.

| | |
|------------------|--|
| Product benefits | To customize and enhance the side of the vehicle |
| Material | Scratch and weather-resistant plastic with high-quality chrome plating |
| Installation | Easy adhesive attachment |
| Cab | L cab |
| Package contents | Kit for driver and front passenger side |

| Article designation | Vehicle | Part number |
|---------------------------|---------------|-------------|
| Chrome applications, door | At4, Ax2, Ax1 | B6 752 0138 |

Chrome slats, front



B6 752 0180

Stylish appearance: The chrome slats in special 3D look on the trim grille lend the dynamic design of the Actros an even more expressive and high-quality look.

| | |
|-------------------|---|
| Product benefits | Visual highlight of the front; customization of the vehicle |
| Cab | 2500 mm (Code F2H) |
| Body floor height | 765 mm (code F2P) |
| Installation | For gluing onto the trim grille |

| Article designation | Vehicle | Part number |
|---------------------|---------|-------------|
| Chrome slats (1-4) | Ac4 | B6 752 0170 |
| Chrome slats (1-5) | Ac4 | B6 752 0180 |
| Top chrome slat | Ac4 | B6 752 0174 |
| Second chrome slat | Ac4 | B6 752 0175 |
| Third chrome slat | Ac4 | B6 752 0176 |
| Fourth chrome slat | Ac4 | B6 752 0177 |
| Fifth chrome slat | Ac4 | B6 752 0178 |



B6 752 0170

Chrome package/stainless steel panel



B6 752 0140



B6 752 0124, B6 752 0125, B6 752 0126

The chrome package underscores impressively the type of trim grille of the Megaspaces cab.

| | |
|------------------|--|
| Product benefits | For customization of the vehicle |
| Material | plastic (ABS) with high-quality chrome plating |
| Installation | adhesive mounting |
| Cab | MegaSpace |

| Article designation | Vehicle | Part number |
|--|----------|-------------|
| Chrome package, five-piece | Ac3 | B6 752 0140 |
| Chrome strip on front-end flap, two-piece | Ac2 | B6 752 0124 |
| Chrome badge on front-end flap, two-piece | Ac2 | B6 752 0125 |
| Stainless steel panel bumper, 324 kW/440 hp, three parts | Ac3, Ac2 | B6 752 0126 |
| Stainless steel panel bumper, 339 kW/460 hp, three parts | Ac3, Ac2 | B6 752 0127 |

Roof lamp bracket



B6 752 0186



B6 752 0187



B6 752 0188



B6 752 0189

Spot on: The roof lamp brackets are perfectly matched to the shape of the respective cab, and form the ideal basis for up to four additional headlamps. For better illumination of the driving and working area in front of the vehicle and an individual look.

| | |
|------------------|--|
| Product benefits | ECE-tested; approved for the European market; resistant to environmental influences, corrosion, stone chipping |
| Material | High-quality stainless steel |
| Dimensions | Pipe diameter 60 mm |
| Package contents | With drawn-in cable set; with 4 welded shackles for screwing on additional headlamps, incl. mounting material for affixing to code L9C |
| Note | When mounting and using roof lamp brackets with additional headlamps please observe the country specific legal requirements |

| Article designation | Vehicle | Part number |
|---|-------------|-------------|
| ClassicSpace roof lamp bracket (code F2U) | Ac4, An, Ar | B6 752 0186 |
| BigSpace roof lamp bracket (code F2V) | Ac4, Ar | B6 752 0187 |
| GigaSpace roof lamp bracket (code F2X) | Ac4 | B6 752 0188 |
| StreamSpace roof lamp bracket (code F2W) | Ac4, Ar | B6 752 0189 |

Chrome / stainless steel / look

Roof lamp bracket



B6 752 0253



B6 752 0247



B6 752 0222

Light makes things clearer. And visibility means safety. The roof lamp bracket gives the Mercedes-Benz truck an impressive appearance.

| | |
|------------------|---|
| Product benefits | With 4 welded shackles for screwing on additional headlamps, incl. mounting material |
| Material | High-quality stainless steel |
| Dimensions | Pipe diameter 60 mm |
| Package contents | ECE-tested; approved for the European market; resistant to environmental influences, corrosion, stone chipping |
| Note | When mounting and using roof lamp brackets with additional headlamps please observe the country specific legal requirements |

| Article designation | Vehicle | Part number |
|--|------------------------------|-----------------|
| Roof lamp bracket for Megaspacer and L cab with high roof (contoured type) | Ac3 | B6 752 0253 |
| Roof lamp bracket for Megaspacer and L cab with high roof (straight type) | Ac3 | B6 752 0252 |
| Roof lamp bracket for S, M and L cab with low DD2 roof (without spoiler) | Ac3 | B6 752 0247 |
| Roof light bar for low roof | At3, At2, At1, Ax3, Ax2, Ax1 | B6 752 0222 |
| Roof light bar for high roof | At3, At2, At1, Ax3, Ax2, Ax1 | B6 752 0235 |
| S cab reinforcements | Ac3 | A 941 790 22 04 |

Chrome/stainless steel/look

Roof lamp bracket rotating beacon



B6 683 0035



A 001 820 10 58

The yellow rotating beacon on the cab roof marks transported loads whose dimensions or weights require particular attention.

| | |
|--------------|--|
| Installation | Fitted to the Mercedes-Benz roof lamp bracket using a separately available adapter plate |
|--------------|--|

| | |
|------|--|
| Note | The use of rotating beacons installed on the vehicle is reserved for priority road users and special-purpose vehicles. For Germany, use is regulated in the German vehicle licensing regulations (StVZO) |
|------|--|

| | |
|----------|--------|
| Diameter | 165 mm |
|----------|--------|

| | |
|-------|--------|
| Color | Orange |
|-------|--------|

LED rotating beacon and adapter plate

| | |
|----------------|--|
| Technical data | Operating voltage 10-32 V; total current consumption 0.4 A |
|----------------|--|

| | |
|----------------|----------------|
| Overall height | Approx. 130 mm |
|----------------|----------------|

| Article designation | Vehicle | Part number |
|---------------------------------|-------------------|-------------|
| LED rotating beacon | Ac4, Ac3, Ac2, Ar | B6 683 0035 |
| Roof lamp bracket adapter plate | Ac4, Ac3, Ac2, Ar | B6 752 0155 |
| Cable duct angular screw | Ac4, Ac3, Ac2, Ar | B6 752 0198 |

Rotating beacon and adapter plate

| | |
|----------------|--|
| Technical data | H1 bulb, 24 V/70 W, total power consumption 3.5 A, parabolic reflector, gear drive, rotational speed 160 rpm |
|----------------|--|

| | |
|----------|---|
| Material | Light cover made of break-proof polycarbonate |
|----------|---|

| | |
|----------------|---------------------------------------|
| Overall height | 200 mm/235 mm depending on air intake |
|----------------|---------------------------------------|

| Article designation | Vehicle | Part number |
|---------------------------------|----------|-----------------|
| Rotating beacon | Ac3, Ac2 | A 001 820 10 58 |
| Roof lamp bracket adapter plate | Ac3, Ac2 | B6 752 0159 |
| Cable duct angular screw | Ac3, Ac2 | B6 752 0198 |

Roof lamp bracket, additional headlamp



B6 683 0039



B6 683 0038

Give your star more brilliance: The additional headlamps upgrade the appearance of the vehicle and ensure better visibility.

| | |
|------------------|---|
| Installation | For all Mercedes-Benz roof lamp brackets |
| Package contents | 1 piece |
| Note | The national legal requirements apply when mounting additional headlamps; high beam headlamps and work lamps are ECE-tested |

Work lamps

For better illumination of the working surface in front of the vehicle. Additional headlamp in modern clear glass look.

| | | |
|---------------------|---|-------------|
| Technical data | 24 V; Ref. 37.5; diameter 22 cm | |
| Article designation | Vehicle | Part number |
| Work lamps | Ac4, Ac3, Ac2, Ac1, An, Ar, At4, At3, At2, At1, Ax3, Ax2, Ax1 | B6 683 0039 |

High beam headlamp

High beam headlamp with fitted 24 V bulb for mounting on roof lamp bracket.

| | | |
|--|---|-------------|
| Technical data | 24 V; H1 bulb; ref. 17.5; diameter 22 cm | |
| Article designation | Vehicle | Part number |
| High beam headlamp without position lamp | Ac4, Ac3, Ac2, Ac1, An, Ar, At4, At3, At2, At1, Ax3, Ax2, Ax1 | B6 683 0038 |

Chrome/stainless steel/look

Roof lamp bracket, additional headlamp



B6 683 0033



B6 683 0033



B6 683 0034

| | |
|------------------|---|
| Installation | For all Mercedes-Benz roof lamp brackets |
| Package contents | 1 piece |
| Note | The national legal regulations for attaching additional headlamps are valid; high beam headlamps are ECE-tested |

High beam headlamp with LED position lamps

Lighting performance: Powerful high beam headlamp with 6 high-performance LEDs and striking night design. The ideal supplement for better light output.

| | |
|------------------|--|
| Product benefits | High-boost reflector for even and ideal illumination of the roadway through the newest computer development; with flexible holding fixture; high beam headlamp with chrome ring; impact-resistant and sturdy housing |
| Technical data | Power consumption of the H1 bulb 24 V/70 W, ref. 17.5 |

| Article designation | Vehicle | Part number |
|--|---|-------------|
| High beam headlamp with LED position lamps | Ac4, Ac3, Ac2, Ac1, AN, AR, At4, At3, At2, At1, Ax3, Ax2, Ax1 | B6 683 0033 |

High beam headlamp with LED ring

Strong light that you can rely on. High beam headlamps with LED ring. High Boost Reflector for even and ideal illumination of the roadway. Impact-resistant and sturdy housing.

| | |
|------------------|--|
| Product benefits | High efficiency for optimized light distribution. |
| Material | Reflector vapor-coated with ultra-pure aluminum, weatherproofed |
| Technical data | Power consumption of the H1 bulb 70 W; ref. 17.5; diameter 22 cm |

| Article designation | Vehicle | Part number |
|----------------------------------|--|-------------|
| High beam headlamp with LED ring | Ac4, Ac3, Ac2, AN, AR, At4, At3, At2, At1, Ax3, Ax2, Ax1 | B6 683 0034 |

Roof lamp bracket, additional headlamp



B6 683 0042, B6 683 0043



B6 683 0043



B6 683 0037

Full-LED high beam headlamp

Give your star more brilliance: The additional headlamps upgrade the appearance of the vehicle and ensure better visibility.

| | |
|----------------|------------------------------------|
| Housing | Black plastic housing, chrome ring |
| Technical data | 24 V; ref. 17.5; diameter 23 cm |

| Article designation | Vehicle | Part number |
|--|---|-------------|
| Full LED high beam headlamp, chrome/black | Ac4, Ac3, Ac2, Ac1, An, Ar, At4, At3, At2, At1, Ax3, Ax2, Ax1 | B6 683 0042 |
| Full-LED high beam headlamp, chrome/chrome | Ac4, Ac3, Ac2, Ac1, An, Ar, At4, At3, At2, At1, Ax3, Ax2, Ax1 | B6 683 0043 |

Rectangular headlamp

Rectangular high beam headlamp for mounting onto roof lamp bracket. The additional LED position lamp with six high-performance LEDs provides a bluish-white light in xenon look. This leads to significantly improved discernibility of the vehicle, offers greater safety and simply looks good.

| | |
|------------------|--|
| Product benefits | High-boost reflectors specially developed for the square shape offer the highest possible light output |
|------------------|--|

| | |
|----------------|--|
| Housing | Black plastic housing, chrome ring |
| Technical data | 24 V, light source mount for H7 bulb, ref. 37.5, width 24.7 cm, height 14.1 cm |
| Note | Six LEDs for the standing lights; H7 bulb for high beam |

| Article designation | Vehicle | Part number |
|----------------------|---|-------------|
| Rectangular headlamp | Ac4, Ac3, Ac2, Ac1, An, Ar, At4, At3, At2, At1, Ax3, Ax2, Ax1 | B6 683 0037 |

Chrome/stainless steel/look



Mercedes-Benz Genuine Parts

More than one hundred years of experience in vehicle and part development make our parts what they are - Mercedes-Benz Genuine Parts. They have been specially developed and tested in accordance with the specification requirements of Mercedes-Benz. Exact fit ensures ease of installation without rework. Mercedes-Benz Genuine Parts stand out for their high quality and reliability - so that your Mercedes-Benz can always remain an original.



Advantages at a glance:

- The latest state of technical development and consistent quality assurance
- Pan-European warranty with long-term availability even after series-production period
- Global supply availability with short procurement times through efficient logistics
- Customer-oriented portfolio of new parts, replacement parts and repair solutions
- Fulfillment of Mercedes-Benz requirements in terms of safety, economy and environmental protection

Exterior

Decorative foils



B6 782 0035

Radiant star: The oversized star decorative foil for the sidewall of the vehicle provides a completely unique appearance that can't be missed.

| | |
|------------------|--|
| Product benefits | For customization of the vehicle |
| Material | 3M-foil contour punched, ready to transfer foil-clad |
| Color | Available in silver and anthracite |
| Installation | Bonding is carried out using the wet bonding method |

| Article designation | Vehicle | Part number |
|---|---------|-------------|
| Decorative foil "Star", silver, left | Ac4 | B6 782 0035 |
| Decorative foil "Star", silver, right | Ac4 | B6 782 0036 |
| Decorative foil "Star", anthracite, left | Ac4 | B6 782 0037 |
| Decorative foil "Star", anthracite, right | Ac4 | B6 782 0038 |

Decorative foils



B6 782 0009



B6 782 0000



B6 782 0001

Clear commitment: Decorative foil with „Actros“ lettering for the side deflector.

| Installation | Simple bonding process, foils can also be glued wet | |
|---|---|-------------|
| Package contents | Kit for driver and front passenger side | |
| Color | Silver anthracite | |
| | | |
| Article designation | Vehicle | Part number |
| Decorative foil, "Actros" for side deflectors | Ac4, Ac3, Ac2, Ac1 | B6 782 0009 |

Hot stuff: The flame pattern. The high-quality Mercedes-Benz decorative foils give your truck cab an individual appearance.

| Installation | Easy adhesive mounting, the decor can also be glued wet | |
|---|---|-------------|
| Color | Available in red and silver | |
| Package contents | Kit for driver and front passenger side | |
| | | |
| Article designation | Vehicle | Part number |
| Decorative foil "Flame pattern", red | Ac4, Ac3, Ac2, Ac1 | B6 782 0000 |
| Decorative foil "Flame pattern", silver | Ac4, Ac3, Ac2, Ac1 | B6 782 0001 |

Exterior

Air horns



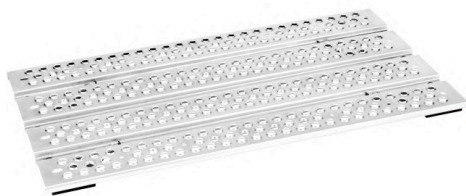
B6 684 8640

Full 2-tone sound: with these air horns you can ensure greater attention e.g. in dangerous situations. For visual enhancement and customization of the vehicle.

| | |
|------------------|--|
| Product benefits | Ensure, e.g. in dangerous situations, increased attention; visual enhancement and customization of the vehicle |
| Material | High-quality stainless steel |
| Installation | Takes place using the assembly materials supplied |
| Dimensions | Horn length approx. 55 and 64 cm |
| Package contents | Set, comprising two horns incl. covers |

| Article designation | Vehicle | Part number |
|---------------------|--|-------------|
| Air horn set | Ac4, Ac3, Ac2, Ac1, Ax3, Ax2, Ax1, At3, At2, At1 | B6 684 8640 |

Step plates behind cab



B6 752 0291



B6 752 0292

This step plate for our top models has a lot to offer! The step plates behind the cab are a visual highlight and complement the standard plates for Actros, Antos and Arocs. In addition, they ensure secure, non-slip stability.

| | |
|------------------------|--|
| Product benefits | So as to be able to stand on the vehicle's frame safely without slipping; for visual enhancement; in standard-like suitability |
| Material | Aluminum |
| Installation | Tightening torque 17,5 Nm |
| Package contents | Step plate and mounting material (preassembled) |
| Note | Please measure the installation space between the standard step plate and fifth wheel coupling, since this can vary depending on the vehicle configuration |
| Additional information | Model designation 963.4x (semi-trailer truck), model designation 964.4x (semi-trailer truck) + air-sprung rear axle (Code I6X) |

| Article designation | Vehicle | Part number |
|--|-------------|-------------|
| Step plate behind cab, Trapez, (W x L) 890 (840) mm x 725 mm | Ac4, An, Ar | B6 752 0290 |
| Step plate behind cab, 840 x 475 mm | Ac4, An, Ar | B6 752 0291 |
| Step plate behind cab, 840 x 225 mm | Ac4, An, Ar | B6 752 0292 |

Chrome / stainless steel / look

Stainless steel steps



B6 752 0162



B6 752 0248



B6 752 0250

Step by step: With the stainless steel steps with anti-slip surfaces, not only can you get in easier, but you can also enhance your vehicle's look.

| | |
|----------------------|---|
| Product benefits | For the optical upgrade of the entrance; series fit |
| Material | High-quality stainless steel |
| Installation | Simple replacement of the original step |
| Package contents | 4 or 3 steps for each side, incl. stainless steel screw attachment and stainless steel sheet nuts |
| Note for B6 752 0162 | Cab width: 2.5 m (Code F2H); identical for driver and front passenger side |

| Article designation | Vehicle | Part number |
|--|---------------|-------------|
| Stainless steel steps, four steps, for driver or front passenger side | Ac4 | B6 752 0162 |
| Stainless steel steps, four-step, MegaSpace cab, left | Ac3, Ac2, Ac1 | B6 752 0248 |
| Stainless steel steps, four-step, MegaSpace cab, right | Ac3, Ac2, Ac1 | B6 752 0249 |
| Stainless steel steps, three-step, complete set for lowliner, left and right identical | Ac3, Ac2, Ac1 | B6 752 0250 |
| Stainless steel clip-on nuts for replacement needs (16 pieces) | Ac3, Ac2 | B6 752 0277 |
| Screw set for replacement needs | Ac3, Ac2, Ac1 | B6 752 0226 |

Chrome/stainless steel/look

Stainless steel steps



B6 752 0246



B6 752 0251

Getting on in itself is a safe and brilliant experience with the non-slip steps made of stainless and mirror polished special steel.

| | |
|------------------|---|
| Product benefits | For the optical upgrade of the entrance; series fit |
| Material | High-quality stainless steel |
| Installation | Simple replacement of the original step |
| Package contents | Incl. screw set, driver and passenger side identical |

| Article designation | Vehicle | Part number |
|----------------------------------|--------------------|-------------|
| Stainless steel step, one-step | At4, At3, At2, At1 | B6 752 0246 |
| Stainless steel step, three-step | Ax3, Ax2, Ax1 | B6 752 0251 |

Stainless steel step covers



B6 752 0238

Noble entryway steps: high-gloss polished stainless steel step covers.

| | |
|------------------|---|
| Material | High-quality stainless steel |
| Cab | For S, M and L cabs |
| Package contents | Set of 3 covers, identical for driver and passenger side |

| Article designation | Vehicle | Part number |
|-----------------------------|----------|-------------|
| Stainless steel step covers | Ac3, Ac2 | B6 752 0238 |

Stainless steel steps front



B6 752 0243



B6 752 0256

Radiant appearance at all times: front steps which replace the series-production steps. With anti-slip tread.

| | |
|---------------------|---|
| Material | High-gloss polished stainless steel |
| Installation | Simple replacement with the original front steps |
| Cab | S cab, M cab, L cab |
| Note | Not with autonomous intelligent cruise control (code ET4 and ET5 and on construction site vehicles) |

| Article designation | Vehicle | Part number |
|---|----------|-------------|
| Stainless steel front step | Ac3, Ac2 | B6 752 0243 |
| Stainless steel front step (high front spoiler) | Ac3 | B6 752 0256 |

Stainless steel grab handles



B6 752 0160

Not an off-the-rack entrance by any means: Stainless steel grab handles for A and B-pillars. For visually enhancing the entrance area.

| | |
|---------------------|---|
| Material | High-gloss polished stainless steel |
| Installation | Simple mounting, stainless steel grab handles replace the original grab handles |
| Diameter | 25 mm |

| Article designation | Vehicle | Part number |
|--|---------------|-------------|
| Stainless steel grab handles, driver's side | Ac3, Ac2, Ac1 | B6 752 0160 |
| Stainless steel grab handles, co-driver's side | Ac3, Ac2, Ac1 | B6 752 0161 |

Stainless steel front bar



B6 752 0152



B6 752 0146, B6 752 0147



B6 752 0100

Sovereign appearance: The robust stainless steel front with vehicle-specific shape emphasizes the distinctive appearance of the vehicle.

| | |
|-------------------------|--|
| Product benefits | For customization of the vehicle; front protection systems offer additional frontal impact protection for motor vehicles |
| Material | High-quality stainless steel |
| Diameter | Pipe diameter 60 mm |
| Weight | 35 kg (Actros), 40 kg (Atego) |
| Note | Homologation specifications in the respective countries must be observed |

For Actros 4

| | |
|-------------------------|---|
| Installation | On the towing device |
| Package contents | 1 front bar, mounting material incl. mounts at the towing eyes, incl. 2 stainless steel brackets for mounting high beam headlamps, Technical Inspection Association report, installation instructions, information label (when tilting the cab). The front bar is supplied without a cable set. |
| Cab width | 2.5 m (Code F2H) |

| Article designation | Vehicle | Part number |
|---------------------------|----------------------------------|-------------|
| Stainless steel front bar | Ac4 (long-distance haulage only) | B6 752 0152 |

For Actros 3, Actros 2

| | |
|-------------------------|---|
| Installation | Attachment via provided console |
| Package contents | Incl. mounting material, Technical Inspection Association report, installation instructions, information label (when tilting the cab) |

| Article designation | Vehicle | Part number |
|--|----------|-------------|
| Stainless steel front bar for Megaspacer cab | Ac3, Ac2 | B6 752 0146 |
| Stainless steel front bar for S, M, L cab | Ac3, Ac2 | B6 752 0147 |

For Atego

| | |
|-------------------------|--------------------------------|
| Package contents | 1 front bar, mounting material |
|-------------------------|--------------------------------|

| Article designation | Vehicle | Part number |
|---------------------------|---------------|-------------|
| Stainless steel front bar | At3, At2, At1 | B6 752 0100 |

Stainless steel slats, front



B6 752 0192



B6 752 0191

More brilliance and a very personal note. After attaching the stainless steel slats to the trim grille, you will draw attention during every drive.

| | |
|-------------------|--|
| Material | High quality stainless steel, material thickness approx. 1 mm |
| Cab width | 2.3 m (Code F2G), 2.5 m (Code F2H) |
| Body floor height | 765 mm (Code F2P) and 600 mm (Code F2N) as well as even floor (Code F2A) and engine tunnel |

| Article designation | Vehicle | Part number |
|--|---------|-------------|
| Stainless steel slats, front (Code F2A+Code F2G+Code F2P) | Ac4 | B6 752 0190 |
| Stainless steel slats, front (Code F2A+Code F2H+Code F2P) | Ac4 | B6 752 0191 |
| Stainless steel slats, front (Code F2G+Code F2N+engine tunnel) | Ac4, An | B6 752 0192 |

Stainless steel trim strips, front end



B6 752 0172

Bright line management: The stainless steel trims to be stuck to the front spoiler emphasize this and ensure an even more individual character.

| Material | High-quality stainless steel | |
|---|------------------------------|-------------|
| Article designation | Vehicle | Part number |
| Outer front spoiler stainless steel trim strips, pair (left and right) | Ac4 | B6 752 0193 |
| Center front spoiler stainless steel trim strip | Ac4, An | B6 752 0194 |
| Stainless steel trim strip set for front spoiler, consisting of B6 752 0193 and B6 752 0194 | Ac4 | B6 752 0172 |

Stainless steel trim parts, louvers, side trim



B6 752 0195

Distinctive details: The louvers for the side panels convey power and aerodynamics and intensify the individual character of the Actros and Antos.

| | |
|--------------|--|
| Material | High quality stainless steel, material thickness approx. 1 mm |
| Installation | For gluing onto the side panel |
| Note | In conjunction with Code C8Z (wheelbase 3700 mm with a side trim, aerodynamic) |

| Article designation | Vehicle | Part number |
|---|---------|-------------|
| Stainless steel trim parts, louver, side paneling | Ac4, An | B6 752 0195 |

Framing for Mercedes-Benz logo below windshield



B6 752 0196

A clear statement: The perfect frame for the Mercedes-Benz logo at the front of your vehicle.

| | |
|--------------|--|
| Material | High quality stainless steel, thickness 3 mm |
| Installation | For affixing to the vehicle front |
| Note | Suitable for all cabs |

| Article designation | Vehicle | Part number |
|--|------------------|-------------|
| Border for Mercedes-Benz logo below windshield | Ac4, Ac3, AN, AR | B6 752 0196 |

Entrance emblem



B6 752 0123



B6 752 0173



B6 752 0137

Elegant detail: Whether illuminated, unlit or with mirrored lettering - the entrance emblem made from stainless steel is a striking eye-catcher.

| | |
|--------------|------------------------------|
| Material | High-quality stainless steel |
| Installation | Adhesive mounting |

Mercedes-Benz entrance emblem, imprinted

| | |
|------------|-------------------|
| Dimensions | 270 x 80 x 0.6 mm |
|------------|-------------------|

| Article designation | Vehicle | Part number |
|--|---|-------------|
| Mercedes-Benz entrance emblem with imprinted lettering | Ac4, Ac3, Ac2, Ac1, An, Ar, At4, At3, At2, At1, Ax3, Ax2, Ax1 | B6 752 0123 |

Mercedes-Benz entrance emblem, mirrored

| | |
|------------|-------------------|
| Dimensions | 500 x 60 x 0.6 mm |
|------------|-------------------|

| Article designation | Vehicle | Part number |
|---|-----------------------|-------------|
| Mercedes-Benz entrance emblem with mirrored lettering | Ac4, Ac3, Ac2, An, Ar | B6 752 0173 |

Mercedes-Benz entrance emblem, illuminated

| | |
|--------------|---|
| Description | The lettering illumination is switched on when the door is opened |
| Installation | Bonding of emblem and electrical connection |
| Dimensions | 500 x 60 x 0.6 mm |
| Note | In Ac4 in combination with body floor height 765 mm (Code F2P) |

| Article designation | Vehicle | Part number |
|---|-----------------------|-------------|
| Mercedes-Benz illuminated entrance emblem | Ac4, Ac3, Ac2, An, Ar | B6 752 0137 |

Chrome/
stainless steel/
look

Mirror covers, chrome-plated (code D0C, FT2)



B6 752 0150

With the mirror for the driver and passenger side you create further highlights and give your vehicle an individual appearance.

| | |
|------------------|--|
| Installation | Simple replacement, mirror cover is installed as a replacement for the original (e. g. code F0X), clip-on assembly |
| Package contents | Kit for driver and front passenger side |

| Article designation | Vehicle | Part number |
|--|-------------|-------------|
| Mirror cover, chrome-plated (code D0C) | Ac4, An, Ar | B6 752 0197 |
| Mirror cover, chrome-plated (code FT2) | Ac3 | B6 752 0150 |



B6 752 0197

Cover for wheel arch and engine (code P0Q)



Clean thing - the wheel arch and engine cover (code P0Q) is attached to the vehicle frame and protects the engine and the detachable parts from certain types of damage and soiling. In particular vehicles for heavy-duty off-road or construction jobs, but also vehicles used on the road can be retrofitted with it.

| | |
|------------------|--|
| Product benefits | Protection of the engine and nearby components against damage caused by stone chipping and dirt; reduced maintenance costs; higher salvage value thanks to engine value conservation |
|------------------|--|

| Article designation | Vehicle | Part number |
|--|---------|-----------------|
| For vehicles with a cab, 765 mm body floor height (code F2P) and with roof wind deflector or side deflector | Ac4 | A 961 520 89 23 |
| For vehicles with a cab, 600 mm body floor height (code F2N), L-cab (code F1R) and with roof wind deflector or side deflectors | Ac4 | A 961 520 91 23 |

Not in combination with roof wind deflectors or side deflectors (Code F5A or F5B or F5C or F5D or F5E or F5H or F5I)

| Article designation | Vehicle | Part number |
|--|---------|-----------------|
| For vehicles with cab, 765 mm body floor height (code F2P), L cab (code F1R) | Ac4 | A 961 520 88 23 |
| For vehicles with cab, 600 mm body floor height (code F2N), L cab (code F1R) | Ac4 | A 961 520 90 23 |

Exhaust box shield



The front side of the exhaust box of 47X engine can be retrofitted inexpensively with a shield.

| | |
|------------------|---|
| Product benefits | Protects the electronic assembly parts of the exhaust box effectively against contamination und damage in vehicles with a gap for jack legs for cranes (code C7Q, JC7Q) |
|------------------|---|

| | |
|--------------|--|
| Installation | The existing attachment points at the exhaust box are used for installation. |
|--------------|--|

| Article designation | Vehicle | Part number |
|---|-------------|-------------|
| Retrofit of exhaust box shield (code C7Q, JC7Q) | Ac4, An, Ar | B6 684 8600 |



B6 684 8600

Stainless steel rear axle cover caps



B6 752 0601



B6 752 0602



B6 752 0625

Right upfront even at the back: The high-quality stainless steel rear axle cap rounds off the dynamic design of your vehicle with a distinctive detail.

| | |
|-------------------------|--|
| Product benefits | Visual upgrade and customization of the vehicle, protects the axle hub against soiling |
| Material | High-quality stainless steel |
| Installation | For 57.15 cm (22.5") rear axle |
| Color | Available in silver and black |

For planetary hub reduction axle HL7 (aluminum or steel rim)

| Article designation | Vehicle | Part number |
|--|---|-------------|
| Stainless steel rear wheel hub cap, polished, silver-colored | Ac4, Ac3, Ac2, Ac1, AN, AR, At4, At3, At2, At1, Ax3, Ax2, Ax1 | B6 752 0601 |
| Stainless steel rear-axle hubcap, painted black | Ac4, Ac3, Ac2, Ac1, AN, AR, At4, At3, At2, At1, Ax3, Ax2, Ax1 | B6 752 0625 |

For hypoid axle HL6/HL8 (aluminum rim)

| Article designation | Vehicle | Part number |
|--|---|-------------|
| Stainless steel rear wheel hub cap, polished, silver-colored | Ac4, Ac3, Ac2, Ac1, AN, AR, At4, At3, At2, At1, Ax3, Ax2, Ax1 | B6 752 0602 |
| Stainless steel rear wheel hub cap, painted black | Ac4, Ac3, Ac2, Ac1, AN, AR, At4, At3, At2, At1, Ax3, Ax2, Ax1 | B6 752 0626 |

For hypoid axle HL6/HL8 (steel rim)

| Article designation | Vehicle | Part number |
|--|---|-------------|
| Stainless steel rear wheel hub cap, polished, silver-colored | Ac4, Ac3, Ac2, Ac1, AN, AR, At4, At3, At2, At1, Ax3, Ax2, Ax1 | B6 752 0609 |
| Stainless steel rear wheel hub cap, painted black | Ac4, Ac3, Ac2, Ac1, AN, AR, At4, At3, At2, At1, Ax3, Ax2, Ax1 | B6 752 0634 |

Stainless steel wheel nut caps



B6 752 0114



B6 752 0113



B6 752 0627



B6 752 0612

Because every detail counts: The wheel nut cap protects the rim and the wheel nuts against damage and sets accents on your vehicle.

| | |
|-----------------|-------------------------------|
| Material | High-quality stainless steel |
| Color | Available in silver and black |

Made of polished stainless steel

| Article designation | Vehicle | Part number |
|---|---|-------------|
| Stainless steel wheel nut cap for 57.15 cm (22.5") steel alloy wheel | Ac4, Ac3, Ac2, Ac1, AN, AR, At4, At3, At2, At1, Ax3, Ax2, Ax1 | B6 752 0610 |
| Stainless steel wheel nut cap for 57.15 cm (22.5") aluminum alloy wheel | Ac4, Ac3, Ac2, Ac1, AN, AR, At4, At3, At2, At1, Ax3, Ax2, Ax1 | B6 752 0611 |
| Stainless steel wheel nut cap for 44.45 cm (17.5") steel alloy wheel | AR, At4, At3, At2, At1 | B6 752 0113 |
| Stainless steel wheel nut cap for 49.53 cm (19.5") steel alloy wheel | At3, At2, At1 | B6 752 0114 |

Made from stainless steel, painted black, with optional Mercedes star

| Article designation | Vehicle | Part number |
|--|---|-------------|
| Wheel nut cap for 57.15 cm (22.5") steel alloy wheel, painted black | Ac4, Ac3, Ac2, Ac1, AN, AR, At4, At3, At2, At1, Ax3, Ax2, Ax1 | B6 752 0627 |
| Wheel nut cap for 57.15 cm (22.5") aluminum alloy wheel, painted black | Ac4, Ac3, Ac2, Ac1, AN, AR, At4, At3, At2, At1, Ax3, Ax2, Ax1 | B6 752 0628 |

Made of polished stainless steel, cover made of plastic, Mercedes star chrome-plated

| Article designation | Vehicle | Part number |
|---|---|-------------|
| Wheel nut cap for 57.15 cm (22.5") aluminum alloy wheel | Ac4, Ac3, Ac2, Ac1, AN, AR, At4, At3, At2, At1, Ax3, Ax2, Ax1 | B6 752 0612 |
| Replacement star for B6 752 0612 | Ac4, Ac3, Ac2, Ac1, AN, AR, At4, At3, At2, At1, Ax3, Ax2, Ax1 | B6 601 0124 |

Stainless steel wheel nut protective caps



B6 752 0621



B6 752 0115



B6 752 0629



B6 752 0631

Attractive and practical: Wheel nut protective caps to protect the wheel nuts and for a visual upgrade.

| | |
|------------------|--|
| Product benefits | Visual upgrade and customization of the vehicle, protects the wheel nuts against damage |
| Material | High-gloss polished stainless steel |
| Note | Wheel nut protective caps for 27 mm size, required for each wheel: 6 units; for 30 mm size, required for each wheel: 10 units; for 32 mm size, required for each wheel: 10 units |

Made of polished stainless steel, silver-colored

| Article designation | Vehicle | Part number |
|--|---|-------------|
| Wheel nut protective caps for size 27 mm | Ac4, Ac3, Ac2, Ac1, AN, AR, At4, At3, At2, At1, Ax3, Ax2, Ax1 | B6 752 0115 |
| Wheel nut protective caps for size 30 mm | Ac4, Ac3, Ac2, Ac1, AN, AR, At4, At3, At2, At1, Ax3, Ax2, Ax1 | B6 752 0116 |
| Wheel nut protective caps for size 32 mm | Ac4, Ac3, Ac2, Ac1, AN, AR, At4, At3, At2, At1, Ax3, Ax2, Ax1 | B6 752 0635 |

Made of stainless steel, powder-coated black

| Article designation | Vehicle | Part number |
|---|---|-------------|
| Wheel nut caps for size 32 mm width across flats (steel rim only) | Ac4, Ac3, Ac2, Ac1, AN, AR, At4, At3, At2, At1, Ax3, Ax2, Ax1 | B6 752 0629 |

Wheel nut protective cap puller

| Article designation | Vehicle | Part number |
|---------------------------------|---|-------------|
| Wheel nut protective cap puller | Ac4, Ac3, Ac2, Ac1, AN, AR, At4, At3, At2, At1, Ax3, Ax2, Ax1 | B6 752 0631 |

Light alloy wheels



B6 601 0007



B6 601 0008



B6 601 0043

Beautiful appearance and more efficiency: the light alloy wheel 57.15 x 22.5 impresses on account of its about 40% lower weight and lower brake wear.

| | |
|-------------------------|---|
| Product benefits | Increase in payload; lower brake wear through high thermal conductivity and excellent ventilation; enhancement and customization of vehicle look; easier to care for; improved handling characteristics |
|-------------------------|---|

| | |
|-----------------|---------------------|
| Material | Aluminum |
| Note | For Atego 1 to 18 t |

| Article designation | Vehicle | Part number |
|---|---|-----------------|
| "Speedline" light alloy wheel, 57.15 cm (22.5") x 9.00, 28.2 kg | Ac4, Ac3, Ac2, Ac1, AN, AR, At4, At3, At2, At1, Ax3, Ax2, Ax1 | B6 601 0007 |
| "Speedline" light alloy rims, 57.15 cm (22.5") x 8.25 for Atego 1 > 18t, 27.35 kg | Ac4, Ac3, Ac2, Ac1, AN, AR, At4, At3, At2, At1, Ax3, Ax2, Ax1 | B6 601 0008 |
| "Speedline" light alloy rims, 44.45 cm (17.5") x 6.75, 14.6 kg | At4, At3, At2, At1 | B6 601 0043 |
| Wheel nuts for front axle | At4, At3, At2, At1, Ax3, Ax2, Ax1 | A 000 401 13 72 |
| Wheel nuts for rear axle | At4, At3, At2, At1, Ax3, Ax2, Ax1 | A 000 401 10 72 |
| Chrome-plated plastic cap for covering the wheel nuts on front axle + rear axle | Ac4, Ac3, Ac2, Ac1, AN, AR, Ax3, Ax2, Ax1 | A 000 401 01 24 |
| Valve for replacement purposes | At4, At3, At2, At1 | A 000 401 71 13 |
| Wheel stud set 6 pieces for 44.45 cm (17.5") x 6.75" rim, for rear axle | At4, At3, At2, At1 | A 000 400 01 72 |
| Wheel stud set, 6 pieces for 44.45 cm (17.5") x 6.75" rim, for front axle | Ac4, Ac3, Ac2, Ac1, AN, AR, At4, At3, At2, At1, Ax3 | A 000 400 02 72 |

Full wheel trim



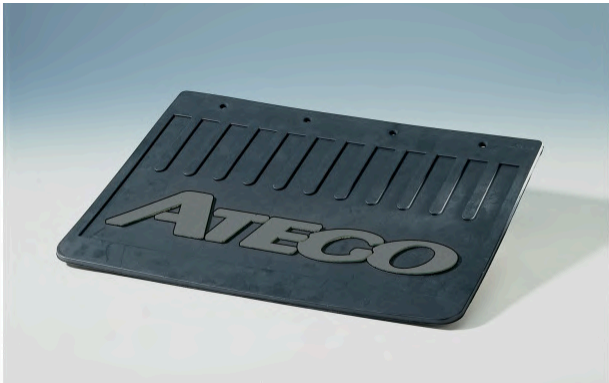
B6 752 0604

Real eye-catcher: wheel cover for the protection of the rim.
Timeless design. Simple and secure assembly.

| | |
|------------------|--|
| Material | High-quality stainless steel |
| Package contents | 1 wheel cover, 1 snap ring, 1 screwdriver, 5 screws/bolts, 1 nut, 5 rubber rings (replacement parts) |
| Note | Mounting is permissible only in combination with valve extension |

| Article designation | Vehicle | Part number |
|---|---|-------------|
| Front axle full wheel trim 44.45 cm /17.5" | Ac4, Ac3, Ac2, Ac1, An, Ar, At4, At3, At2, At1, Ax3, Ax2, Ax1 | B6 752 0607 |
| Rear axle full wheel trim 44.45 cm /17.5" | Ac4, Ac3, Ac2, Ac1, An, Ar, At4, At3, At2, At1, Ax3, Ax2, Ax1 | B6 752 0608 |
| Front axle full wheel trim 49.53 cm /19.5" | Ac4, Ac3, Ac2, Ac1, An, Ar, At4, At3, At2, At1, Ax3, Ax2, Ax1 | B6 752 0605 |
| Rear axle full wheel trim 49.53 cm /19.5" | Ac4, Ac3, Ac2, Ac1, An, Ar, At4, At3, At2, At1, Ax3, Ax2, Ax1 | B6 752 0606 |
| Front axle full wheel trim 57.15 cm /22.5" | Ac4, Ac3, Ac2, Ac1, An, Ar, At4, At3, At2, At1, Ax3, Ax2, Ax1 | B6 752 0603 |
| Rear axle full wheel trim 57.15 cm /22.5" | Ac4, Ac3, Ac2, Ac1, An, Ar, At4, At3, At2, At1, Ax3, Ax2, Ax1 | B6 752 0604 |

Mud flap



B6 653 0009

Clean-cut affair: The rear side of the mud flap has been provided with a special profile in order to channel splash water and to effectively reduce “spray formation”.

| | |
|------------------|--|
| Product benefits | Oil, weather, ozone resistant, high tearing resistance |
| Material | Mud flap made of high-quality rubber blend (Quality 10296/A) with vulcanized-in, white, "Atego" lettering with no discoloration |
| Installation | Easy installation: front wheel mud flap with mounting perforation, 378 x 190 mm; rear wheel mud flap with mounting perforation, 378 x 250 mm |

| Article designation | Vehicle | Part number |
|---------------------|--------------------|-------------|
| Mud flap, front | At4, At3, At2, At1 | B6 653 0000 |
| Mud flap, rear | At4, At3, At2, At1 | B6 653 0009 |

Valve extensions



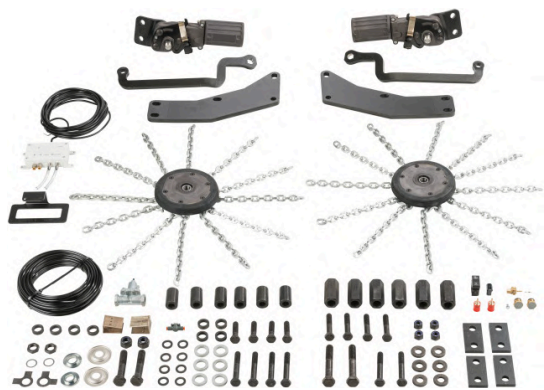
B6 752 0622

Easy, practical and safe: Valve extension for air pressure monitoring without removing the full hubcap. Multi-layered design for outstanding safety. Simple assembly. Available in three lengths.

| Article designation | Vehicle | Part number |
|------------------------|---|-------------|
| Valve extension 75 mm | Ac4, Ac3, Ac2, Ac1, AN, AR, At4, At3, At2, At1, Ax3, Ax2, Ax1 | B6 752 0622 |
| Valve extension 145 mm | Ac4, Ac3, Ac2, Ac1, AN, AR, At4, At3, At2, At1, Ax3, Ax2, Ax1 | B6 752 0623 |
| Valve extension 185 mm | Ac4, Ac3, Ac2, Ac1, AN, AR, At4, At3, At2, At1, Ax3, Ax2, Ax1 | B6 752 0624 |

Exterior

Automatic tire chains



The automatic tire chains are switched on or deactivated at the press of a button in the cab when moving off or during the journey (up to 50 km/h) on smooth and icy roads and moved back to their original position. The smooth running and tire-preserving automatic snow chains are mounted sturdily. They provide an optimized chain skein distribution 6 /12/18 for the sprocket kits adapted to the tire size. The rougher the tire tread, the fewer chain skeins there are.

So that you can safely stay in lane in the event of ice and snow: with the automatic tire chains for your truck.

| | |
|------------------------|---|
| Product benefits | Reduced risk of accidents thanks to 30% better traction of the drive wheels on smooth and slippery surfaces; easily engageable during the journey; high economic efficiency thanks to long service life; insensitive to temperature and oxidation-resistant |
| Version | Weight-optimized |
| Weight | Gross weight approx. 25 kg per side |
| Area of use | On roads packed with ice or covered with snow |
| Installation | The installation height from the center of the rubber sprocket to the floor is max. 80 mm |
| Technical data | Operating speed of 3 km/h to max. 50 km /h; activation speed from 3 km/h or when wheels are spinning; supply voltage 24 V, fuse 8 A; compressed air supply 7 to 10 bar |
| Exclusions B6 758 0950 | 967.020, 967.021, 967.022, 967.023, 967.024 and all single-tired vehicles |
| Exclusions B6 758 0951 | 967.000, 967.001, 967.002, 967.003, 967.004, 967.201, 967.202 and all single-tired vehicles |

| Article designation | Vehicle | Part number |
|---|-------------------|-------------|
| Automatic tire chain, Bolt-on kit, sprocket kit 190/12, basic unit | Ac4, An, Ar, Econ | B6 758 0949 |
| Automatic tire chain for Atego 967 air-sprung, Bolt-on kit, sprocket kit 170/18, basic unit | At4 | B6 758 0950 |
| Automatic tire chain for 967 leaf-sprung, Bolt-on kit, sprocket kit 170/18, basic unit | At4 | B6 758 0951 |

Automatic tire chains



Always a tire length ahead: with automatic tire chains for snowy winter days. The automatic tire chains are a traction aid that can be engaged when driving. The automatic tire chains are attached to the drive axle and connected to the vehicle's compressed-air system. When the switch in the cab is pressed, the chain wheels are pressed onto the inner side of the tire on the drive axle via a swivel arm. The drive wheels of the vehicle now set the pressed-on chain wheels into motion. Centrifugal force moves the chain skeins attached to the chain wheels underneath the wheels of the drive axle so that the driven wheels gain solid traction.

| | |
|------------------|--|
| Technical data | Depending on the model involved, a system weight of approx. 30-45 kg |
| Validity | Approved up to 50 km/h |
| Package contents | The vehicle sets consist of: adapter set, 2 x aluminum sprockets with rubber-lined tread, 2 cylinders with lever system and control system, all required connections, valves, switches and lines |

| Article designation | Vehicle | Part number |
|--|-----------------------------------|-------------|
| Automatic tire chain, as of 16 t leaf-sprung for 4 x 2, 4 x 4 | Ac3, Ac2, Ac1 | B6 758 0907 |
| Automatic tire chain, as of 18 t air-sprung for 4 x 2, 6 x 2, 6 x 2/4, 295 /80, 315/70 or 315/60 R 22.5 | Ac3, Ac2, Ac1, Ax2, Ax1 | B6 758 0930 |
| Automatic tire chain, as from 18 t, air-sprung for 4 x 2, 6 x 2, 6 x 2/4, 275 /70, 285/60 or 315/60 R 22.5 | Ac3, Ac2, Ac1, At2, At1, Ax2, Ax1 | B6 758 0931 |
| Automatic tire chain, as of 6.5 t air-sprung for 6 x 2, 315/70 R 22.5 | Ac3, Ac2, Ac1 | B6 758 0941 |
| Automatic tire chain, air-sprung for 4 x 2, 275/70 or as of 315/70 R 22.5 | Ac3, Ac2, Ac1 | B6 758 0942 |
| Automatic tire chain, leaf sprung for 4 x 2, 4 x 2, 315/70 R 22.5 | Ac3, Ac2, Ac1, At2, At1 | B6 758 0946 |
| Automatic tire chain, air-sprung for 4 x 2, 2/2 or 315/70 R 22.5 | Ax2, Ax1 | B6 758 0943 |
| Automatic tire chain, as from 6.5 t, leaf-sprung for HL2 axis, as from 215 /75 R 17.5 | At2, At1 | B6 758 0932 |
| Automatic tire chain, as from 6.5 t, air-sprung for HL2 and HL4 axes, as from 215/75 R 17.5 | At2, At1 | B6 758 0933 |
| Automatic tire chain, as from 6.5 t, leaf-sprung for HL4 axis, as from 285 /70 R 19.5 | At3, At2, At1 | B6 758 0934 |

| Sprockets for replacement needs | | |
|---------------------------------|-----------------------------------|-------------|
| Article designation | Vehicle | Part number |
| Sprocket, 195 mm | Ac3, Ac2, Ac1, At2, At1, Ax2, Ax1 | B6 758 0901 |
| Sprocket, 160 mm | Ac3, Ac2, Ac1, At2, At1, Ax2, Ax1 | B6 758 0903 |

Standard lightweight construction caliper couplings, manually lubricated or low-maintenance



B6 789 3703

Easy coupling and uncoupling: Mercedes-Benz offers you a wide range of standard fifth wheel couplings, as well as low-maintenance fifth wheel couplings that don't need to be manually lubricated.

| | |
|-------------------------|-----------------|
| Overall height | 150 mm / 250 mm |
| Fifth wheel load | 20 t |
| Maximum traction weight | 65 t |

Sturdy 2" lightweight standard fifth wheel coupling, JSK37C

| | |
|------------------|---|
| Product benefits | Sturdy design; shock absorbing rubber mount; long handle, manually lubricated or low-maintenance |
| Note | Suitable for 6 x 2 and 6 x 4 vehicles in long-distance haulage, in heavy-duty service on rough roads and on construction sites. Only usable with mounting plate |

| Article designation | Vehicle | Part number |
|-----------------------------|---|-------------|
| Manually lubricated, 150 mm | Ac4, Ac3, Ac2, Ac1, AN, AR, At4, At3, At2, At1, Ax3, Ax2, Ax1 | B6 789 3703 |
| Low-maintenance, 150 mm | Ac4, Ac3, Ac2, Ac1, AN, AR, At4, At3, At2, At1, Ax3, Ax2, Ax1 | B6 789 3710 |
| Low-maintenance, 250 mm | At4, At3, At2, At1, Ax3, Ax2, Ax1 | B6 789 3712 |

Weight-optimized 2" lightweight standard fifth wheel coupling, JSK42

| | |
|------------------|--|
| Product benefits | Saves weight (approx. 50-60 kg) and costs, since no assembly plate is required; one-hand operation and longer handle; manually lubricated or low-maintenance |
| Note | Suitable for 4 x 2 vehicles in long-distance and distribution haulage |

| Article designation | Vehicle | Part number |
|-----------------------------|---|-------------|
| Manually lubricated, 150 mm | Ac4, Ac3, Ac2, Ac1, AN, AR, At4, At3, At2, At1, Ax3, Ax2, Ax1 | B6 789 3742 |
| Low-maintenance, 150 mm | Ac4, Ac3, Ac2, Ac1, AN, AR, At4, At3, At2, At1, Ax3, Ax2, Ax1 | B6 789 3744 |



B6 789 3744

Lockable fuel filler cap (code K5M)



A 000 470 44 05



A 000 470 66 05

Perfect protection: The lockable fuel filler cap makes life more difficult for fuel thieves. Simple and comfortable handling ensured by one-key system for fuel tank.

| | |
|------------------|---|
| Package contents | Is supplied without a lock cylinder. Cylinder with key has to be ordered separately |
|------------------|---|

| For AdBlue® | | |
|-------------------------------|---|-----------------|
| Article designation | Vehicle | Part number |
| Lockable tank cap for AdBlue® | Ac4, Ac3, Ac2, Ac1, An, Ar, At4, At3, At2, At1, Ax3, Ax2, Ax1 | A 000 470 44 05 |

| For diesel | | |
|-------------------------------------|--|-----------------|
| Article designation | Vehicle | Part number |
| Lockable fuel filler cap for diesel | Ac3, Ac2, Ac1, At4, At3, At2, At1, Ax3, Ax2, Ax1 | A 000 470 50 05 |
| Lockable fuel filler cap for diesel | Ac4, Ar, An, Ecn | A 000 470 66 05 |

| Lock cylinder for lockable fuel filler cap | | |
|---|------------------|-----------------|
| Article designation | Vehicle | Part number |
| Lock cylinder for vehicle locking mechanism | Ac4, Ac3, An, Ar | A 000 760 36 05 |
| Lock cylinder for any locking mechanism | Ac4, Ac3, An, Ar | A 000 760 43 05 |

Mobile LED traffic hazard management light set



B6 653 0015

Whether breakdown or accident: The LED traffic hazard management light set draws attention of the following traffic to the danger zone in due time. The five bright LED light elements are set up in an instant. On account of the sequentially flashing light signals the risk is distinctly minimised.

| | |
|------------------|---|
| Product benefits | For quick protection of vehicles in dangerous situations |
| Package contents | 5 LED light spots in a combined transport and charging container with charging cable |
| Technical data | Flashing frequency 60 flashes/minute; operating voltage 10-30 volts; rechargeable via vehicle's electrical system using 2-pin automotive connector; complete charging of the rechargeable battery takes around 14 hours, period of operation: at least 12 hours |

| Article designation | Vehicle | Part number |
|--------------------------|------------------|-------------|
| Mobile LED breakdown set | All model series | B6 653 0015 |

Safety set



B6 684 8641

Not be overlooked: Set consisting of safety vest and warning lamp for your safety in road traffic. The safety vest is legally required in some countries. In addition, the warning lamp is used to protect the accident location and any broken down vehicles.

| | |
|------------------|---|
| Product benefits | Additional road safety and improved recognition in daylight and at night as well as clear hazard warning and corresponding protection function for driver, vehicle, load and other road users |
| Package contents | 1 safety vest, 1 warning light |
| Function | Warning light: yellow for protecting the hazard area, white, steady light for working on the vehicle in the dark |

| Article designation | Vehicle | Part number |
|---------------------|------------------|-------------|
| Safety set | All model series | B6 684 8641 |

Stone chipping protective grille for headlamps



A 960 826 00 03

Increased protection of the main headlamps against damage from stone chipping, branches etc., especially when in use on construction sites and rough roads.

| | |
|-----------------|---|
| Material | Metal, painted gray |
| Note | Only in combination with 2,30 m cab width (Code F2G), bumper, steel corners (Code F7B). Not in combination with headlamp cleaning system (Code L3Z) |

| Article designation | Vehicle | Part number |
|---|---------|-----------------|
| Retrofitting of rockfall protective grille, metal, for headlamps (Code L4Z) | AN, AR | A 960 826 00 03 |

Stone chipping protective window for headlamps



B6 601 0150

Ideal protection: The headlamp protector protects the main headlamps and front fog lamps against stone chipping and subsequent repairs. Can be folded out easily to clean the headlamps.

| | |
|-------------------------|---|
| Material | Acrylic glass |
| Package contents | Set for driver and front passenger side, incl. mounting kit |

| Article designation | Vehicle | Part number |
|---------------------|----------|-------------|
| Headlamp protector | Ac3, Ac2 | B6 601 0150 |

For replacement needs

| Article designation | Vehicle | Part number |
|--------------------------|----------|-------------|
| Left headlamp protector | Ac3, Ac2 | B6 601 0146 |
| Right headlamp protector | Ac3, Ac2 | B6 601 0147 |
| Left fastening kit | Ac3, Ac2 | B6 601 0148 |
| Right fastening kit | Ac3, Ac2 | B6 601 0149 |

Side window wind deflector



B6 753 0025



B6 753 0005

Drive fast without a draft: The side window wind deflector protects against airstream with an open window. The precise fit ensures that little wind noise develops while driving. With a custom-fit cutout for the curb view mirror on the co-driver side.

| | |
|------------------|--|
| Material | Acrylic glass, 3 mm thickness |
| Color | Available in tinted and clear variants |
| Package contents | Set for driver and passenger side, incl. mounting material |

| Article designation | Vehicle | Part number |
|---|-------------|-------------|
| Side window wind deflectors for left-hand drive vehicle, pair, tinted | Ac4, An, Ar | B6 753 0025 |
| Side window wind deflectors for RHD, pair, tinted | Ac4, An, Ar | B6 753 0026 |
| Side window wind deflectors for LHD, pair, clear | Ac4, An, Ar | B6 753 0027 |
| Side window wind deflectors for RHD, pair, clear | Ac4, An, Ar | B6 753 0028 |
| Side window wind deflectors for left-hand drive vehicle, pair, tinted | Ac3, Ac2 | B6 753 0005 |
| Side window wind deflectors for RHD, pair, tinted | Ac3, Ac2 | B6 753 0006 |
| Side window wind deflector for left-hand drive vehicles, pair, clear | Ac3, Ac2 | B6 753 0030 |
| Side window wind deflectors for left-hand drive vehicle, pair, tinted | Ac1 | B6 753 0013 |

Side window wind deflector



No turbulences: Side window wind deflectors for draft-free driving even with the windows open. With a custom-fit cutout for the curb view mirror on the co-driver side.

| | |
|------------------|--|
| Material | Acrylic glass, 3 mm thickness |
| Color | Available in tinted and clear variants |
| Package contents | Set for driver and passenger side, incl. mounting material |

| Article designation | Vehicle | Part number |
|--|-----------------------------------|-------------|
| Side window wind deflectors for left-hand drive vehicle, tinted | At4, At3, At2, At1, Ax3, Ax2, Ax1 | B6 753 0014 |
| Side window wind deflectors for right-hand drive vehicle, tinted | At4, At3, At2, At1, Ax3, Ax2, Ax1 | B6 753 0017 |
| Side window wind deflectors for LHD vehicle, clear | At4, At3, At2, At1, Ax3, Ax2, Ax1 | B6 753 0031 |

| For replacement needs | | |
|---|-----------------------------------|-------------|
| Article designation | Vehicle | Part number |
| Side window wind deflector mounting kit for replacement needs | Ac4, An, Ar | B6 753 0015 |
| Side window wind deflectors mounting set | Ac3, Ac2, Ac1 | B6 753 0016 |
| Side window wind deflector mounting kit for replacement needs | At4, At3, At2, At1, Ax3, Ax2, Ax1 | B6 753 0029 |

The interior.



Protection and comfort.

If you travel a lot, you still want to enjoy the utmost comfort, even when you are away from home. The genuine accessories for the interior combine high functionality with living and sleeping comfort.



Stowage tray (retrofitting D71)



A 960 843 00 07 9051

Flexible and practical: The removable stowage tray is simply hooked into the stowage compartments under the bed and can be moved individually. Ideal for stowing small traveling utensils in a neat and orderly fashion.

| | |
|------------|---|
| Weight | 2 kg |
| Dimensions | (W x L x H) 450 x 191 x 165 mm |
| Note | With Solostar Code D0Z and Soundsystem Code J2J it can only be screwed , if the stowage box is on the left below FHS Code F4Z |

| Article designation | Vehicle | Part number |
|---------------------|---------|----------------------|
| Stowage tray | Ac4 | A 960 843 00 07 9051 |

CD boxes

Storage



B6 626 0299

The CD box for 12 CDs is mounted above the windshield within reach of the driver. Protects the CDs from light, dust and heat. Compartments can be opened individually at the press of a button.

| | |
|------------------|--|
| Product benefits | Well-organized storage while also offering protection from the effects of light, heat and dust for CDs |
| Installation | Is fitted above the windshield within reach of the driver |

| Article designation | Vehicle | Part number |
|--|----------|-------------|
| CD box, 12 compartments, with installation kit | Ac3, Ac2 | B6 626 0299 |
| CD box, 12 compartments | Ac3, Ac2 | B6 626 0297 |



B6 626 0297

Cockpit stowage tray



B6 626 0333

Practical stowage tray with anti-slip insert. Ideal for everything that must be within reach.

| | |
|------------------|---|
| Product benefits | Orderly accommodation with optimized arrangement, including for stowing smaller utensils; extension of available stowage space options in cab |
| Installation | Easy to attach, short installation time |
| Dimensions | 760 mm x 360 mm x 80 mm |
| Note | Stowage tray is prepared for extension with a 24 V power outlet or this can be added |

| Article designation | Vehicle | Part number |
|----------------------|---------|-----------------|
| Cockpit stowage tray | Ac4 | B6 626 0333 |
| Power outlet | Ac4 | A 960 545 02 26 |
| Cable set | Ac4 | B6 683 0044 |



B6 667 2031

Tidy mind is half the battle - also in the cockpit: Practical stowage tray with large compartments for everything that must be within reach.

| | |
|--------------|---|
| Installation | Easy to attach on the dash support, quick installation time |
|--------------|---|

| Article designation | Vehicle | Part number |
|----------------------|--|-------------|
| Cockpit stowage tray | Ac3, Ac2, Ac1, At4, At3, At2, At1, Ax3, Ax2, Ax1 | B6 667 2031 |

| | |
|------|--|
| Note | This product from the exclusive Actros Black Liner and White Liner Limited Editions is also available for your Actros as an accessory, without a leather mat; the present rubber mat can continue to be used |
|------|--|



B6 667 2039

| Article designation | Vehicle | Part number |
|--|----------|-------------|
| Cockpit stowage tray with metalized edge | Ac3, Ac2 | B6 667 2039 |

SoloStar folding box



B6 626 0110

Universally usable: The SoloStar folding box e.g. keeps beverages cold and hot food warm. Ideal use of the space below the front passenger seat.

| | |
|------------------------|---|
| Product benefits | Hard-wearing, washable, dishwasher-proof, low weight, foldable, good insulation properties for transporting fresh food, comfortable belt for good comfort-fit |
| Material | Polypropylene |
| Dimensions | Dimensions, unfolded (W x L x H) 294 x 244 x 155 mm; dimensions, folded: (W x L x H) 294 x 244 x 63 mm |
| Note | Fitting box with thermal function for the space under the front passenger seat for SoloStar cab concepts; can also be accommodated in all other stowage spaces in the vehicle |
| Additional information | Content/capacity 6.9 l; load-bearing capacity 7 kg |

| Article designation | Vehicle | Part number |
|----------------------|----------------------|-------------|
| SoloStar folding box | For all model series | B6 626 0110 |

Key ring



B6 667 2041

Practical and comfortable: The key ring has been specially designed for the multifunction key for your truck and this can be easily attached to it. Other keys can also be attached to the key ring.

| | | |
|---------------------|---|-------------|
| Product benefits | Practical storage of keys specially for the multifunction key | |
| Material | Made from felt fabric, with Mercedes-Benz logo | |
| Dimensions | (W x L x H) 150 x 35 x 5 mm | |
| Article designation | Vehicle | Part number |
| Key ring | For all model series | B6 667 2041 |

Key pouch



B6 667 2042

The key case with a snap hook protects the display of the multifunction key from getting scratched.

| | | |
|---------------------|---|-------------|
| Product benefits | Practical storage of keys; protects the display of the multifunction key from getting scratched | |
| Material | 100% polyester, with velcro fastener | |
| Dimensions | (W x L x H) 140 x 70 x 40 mm | |
| Article designation | Vehicle | Part number |
| Key case | Ac4 | B6 667 2042 |

Stowage compartment bag for the stowage compartment behind the driver's seat



B6 787 2171



B6 787 2171

Variable usage: Insulated bag for food with sliding partition. Fits into stowage compartment behind the driver. Fastener with zipper.

| | |
|------------------|---|
| Product benefits | Additional storage option; variable usage |
| Dimensions | (W x L x H) 50 x 27 x 33 cm |
| Material | Polyester |

| Article designation | Vehicle | Part number |
|--|----------|-------------|
| Stowage compartment bag for the stowage compartment behind the driver's seat | Ac3, Ac2 | B6 787 2171 |

Stowage compartment bag for the stowage compartment below the bunk



B6 787 3692

Perfect companion. Ideal usage of the medium-large stowage compartment under the bunk. Quick access through opening at top with zipper and further functional details. Modern design combined with sturdy, easy-to-clean material.

| | |
|------------------|---|
| Product benefits | Additional storage option; variable usage |
| Material | Polyester |
| Dimensions | (W x L x H) 54 x 34 x 19 cm |

| Article designation | Vehicle | Part number |
|--|---------|-------------|
| Stowage compartment bag for the stowage compartment below the bunk | Ac4 | B6 787 3692 |

Stowage compartment bag for the drawer below the bed



B6 787 2172

Clothing and shoes - readily accessible: The big storage space bag with extra shoe compartment. All sections are closed with a zipper.

| | |
|-------------------------|---|
| Product benefits | Additional storage option; variable usage |
| Material | Polyester |
| Dimensions | (W x L x H) 65 x 40 x 19 cm |
| Note | Only for Actros as of 2003 |

| Article designation | Vehicle | Part number |
|--|----------|-------------|
| Stowage compartment bag for the drawer below the bed | Ac3, Ac2 | B6 787 2172 |

Laundry bag for stowage compartment over the windshield



B6 787 3691



B6 787 2173

Clothing and shoes - readily accessible: The big storage space bag with extra shoe compartment. All sections are closed with a zipper.

| | |
|-------------------------|--|
| Product benefits | Additional storage option; variable usage |
| Material | Polyester |
| Dimensions | B6 787 2173: (W x L x H) 64 x 24 x 26 cm; B6 787 3691: (W x L x H) 44 x 37 x 30 cm |

| Article designation | Vehicle | Part number |
|--|----------|-------------|
| Laundry bag for BigSpace/ GigaSpace cab | Ac4 | B6 787 3691 |
| Laundry bag for stowage compartment above the windshield | Ac3, Ac2 | B6 787 2173 |



Mercedes-Benz oil

Mercedes-Benz oil is the optimum lubricant for Mercedes-Benz engines - designed by our engine developers. The result is an oil that corresponds to 100 % of the requirements of a Mercedes-Benz, so that your truck runs smoothly.



Advantages at a glance:

- Lower mechanical friction to guarantee the outstanding engine properties
- Guarantees outstanding engine output
- Optimized fuel consumption
- Ensures the vehicle's longevity and performance

Ambient lighting



The ambient lighting with a total of 136 LEDs for the glass tilting/sliding roof can be used to configure the light in the driver's cab to meet your exact requirements. The LED color can be selected at the push of a button, to suit your particular lighting mood. Six different colors (warm white, amber, blue, red, green, yellow) are preset and they can be selected quickly. All the other light colors can also be configured individually, thereby providing an individual and comfortable ambiance in the cab. Can be installed in Actros 4 and Arocs with L cab, StreamSpace, BigSpace or GigaSpace with power glass tilting/sliding roof (code D8M) or power tilting roof (code D8N).



| | | |
|----------------------------|--|--------------------|
| Product benefits | Pleasant, indirect light; unique atmosphere of wellbeing indoors; easy adjustment of the desired light color; continuously dimmable light strength | |
| Technical data | Operating voltage 24 V; power consumption 1 A | |
| Property | Full set incl. switch | |
| | | |
| Article designation | Vehicle | Part number |
| Ambient lighting | Acn, Ac4, Ar | B6 626 0360 |

Interior

LED reading lamp



B6 682 8805

Practical additional lighting in cockpit: reading lamp with white LED and flexibly adjustable gooseneck.

| | |
|-------------------|--|
| Product benefits | Low power consumption and long service life |
| Dimensions | Length approx. 400 mm |
| Connections | Electrical connection through a 120-mm long line |
| Technical data | 24 V, 3 W, power consumption = approx. 0.12 A |
| Package contents | Incl. light source, mounting clip and mounting screws, supplied with unconnected cable end for individual mounting |
| Material | Housing, cover made of black plastic, base painted in black |
| Installation time | Approx. 30-45 minutes |

| Article designation | Vehicle | Part number |
|---------------------|---|-------------|
| LED reading lamp | Ac4, Ac3, Ac2, Ac1, AN, AR, At4, At3, At2, At1, Ax3, Ax2, Ax1 | B6 682 8805 |

Interior

Bed, 900 mm



B6 626 0365

Extra wide for extra comfort. The “900 mm bed” provides even more rest and sleeping comfort in the 2.5 m wide cabs StreamSpace, BigSpace and GigaSpace.

| | |
|------------------|---|
| Product benefits | Higher rest and sleeping comfort |
| Dimensions | Mattress thickness 14 cm, 90 cm wide, 220 cm long |
| Package contents | Bed and mattress |
| Cab width | 2.5 m (Code F2H) |
| Exclusions | Air intake via corner (Code M8D) |

| Article designation | Vehicle | Part number |
|-------------------------------|---------|-------------|
| Bed upper extra wide (900 mm) | Ac4 | B6 626 0365 |

Bedding sets



B6 787 3695



B6 787 2424

Relaxing sleep meets beautiful design.

| | |
|------------------|--|
| Product benefits | High abrasion resistance, breathable, crease-resistant, keeps its shape, lightfast, ecologically compatible in accordance with Oeko-Tex Standard 100, suitable for allergy sufferers |
| Material | Covers and pillows filled with polyester-cotton mixture; duvet covers made of soft fine fabric, washable up to 60 °C |

"Break" bedding set in barely inflammable quality

| Note | Filling is not barely inflammable | |
|--|--|-------------|
| Article designation | Vehicle | Part number |
| Bedding set (cushion cover and duvet cover) | Ac4, Ac3, Ac2, Ac1, Ax3, Ax2, Ax1, At3, At2, At1 | B6 787 3695 |
| Bedding set (cushion cover and duvet cover, each with filling) | Ac4, Ac3, Ac2, Ac1 | B6 787 3700 |
| Duvet cover, 135 x 200 cm | Ac4, Ac3, Ac2, Ac1 | B6 787 3693 |
| Cushion cover 80 x 80 cm | Ac4, Ac3, Ac2, Ac1 | B6 787 3694 |
| Filling of bedding set, for cushion cover and duvet cover | Ac4, Ac3, Ac2, Ac1 | B6 787 3701 |

"Checkerboard" bedding set

| Article designation | Vehicle | Part number |
|--|--|-------------|
| Bedding set (cushion cover and duvet cover, each with filling) | Ac4, Ac3, Ac2, Ac1, Ax3, Ax2, Ax1, At3, At2, At1 | B6 787 2424 |
| Duvet cover, 135 x 200 cm | Ac4, Ac3, Ac2, Ac1, Ax3, Ax2, Ax1, At3, At2, At1 | B6 787 2443 |
| Cushion cover 60 x 60 cm | Ac4, Ac3, Ac2, Ac1, Ax3, Ax2, Ax1, At3, At2, At1 | B6 787 2444 |
| Filling for cushion cover, 60 x 60 cm | Ac4, Ac3, Ac2, Ac1, Ax3, Ax2, Ax1, At3, At2, At1 | B6 787 2058 |
| Filling for bed cover, 135 x 200 cm | Ac4, Ac3, Ac2, Ac1, Ax3, Ax2, Ax1, At3, At2, At1 | B6 787 2059 |

Bedding sets



B6 787 2130



B6 787 2422, B6 787 2423



B6 787 2056, B6 787 2057

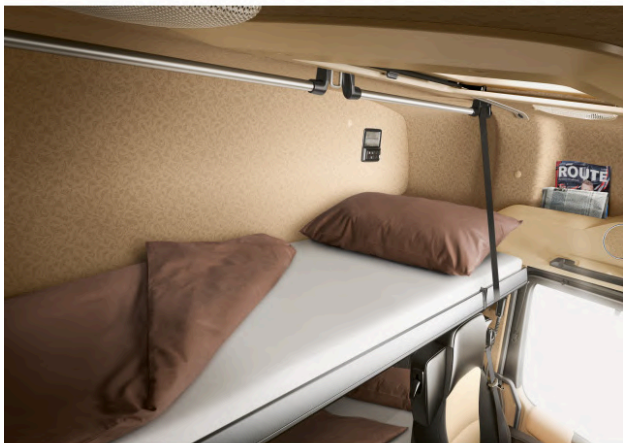
For relaxing sleep.

| Property | Washable at up to 60 °C | |
|--|--|-------------|
| "Plaid-patterned" bedding set | | |
| Material | Made from elegant fabric that is soft to the touch | |
| | | |
| Article designation | Vehicle | Part number |
| Bedding set (cushion cover and duvet cover, each with filling) | Ac4, Ac3, Ac2, Ac1, Ax3, Ax2, Ax1, At3, At2, At1 | B6 787 2130 |
| Duvet cover, 135 x 200 cm | Ac4, Ac3, Ac2, Ac1, Ax3, Ax2, Ax1, At3, At2, At1 | B6 787 2055 |
| Cushion cover 60 x 60 cm | Ac4, Ac3, Ac2, Ac1, Ax3, Ax2, Ax1, At3, At2, At1 | B6 787 2054 |
| Filling for cushion cover, 60 x 60 cm | Ac4, Ac3, Ac2, Ac1, Ax3, Ax2, Ax1, At3, At2, At1 | B6 787 2058 |
| Filling for bed cover, 135 x 200 cm | Ac4, Ac3, Ac2, Ac1, Ax3, Ax2, Ax1, At3, At2, At1 | B6 787 2059 |

| Neck bolster and travel neck pillow | | |
|---|--|-------------|
| Ideal for a nap and for relaxing when reading or watching television. Matches bedding design. | | |
| Material | 100% cotton | |
| Article designation | Vehicle | Part number |
| Bolsters for “checkerboard” bedding set | Ac4, Ac3, Ac2, Ac1, Ax3, Ax2, Ax1, At3, At2, At1 | B6 787 2422 |
| Crescent-shaped cushion for “checkerboard” bedding set | Ac4, Ac3, Ac2, Ac1, Ax3, Ax2, Ax1, At3, At2, At1 | B6 787 2423 |
| Bolsters for “plaid-patterned” bedding set | Ac4, Ac3, Ac2, Ac1, Ax3, Ax2, Ax1, At3, At2, At1 | B6 787 2056 |
| Crescent-shaped cushion for “plaid-patterned” bedding set | Ac4, Ac3, Ac2, Ac1, Ax3, Ax2, Ax1, At3, At2, At1 | B6 787 2057 |

Interior

PremiumComfort mattress



A 000 970 87 49

Healthy and relaxing sleep: The new multi-zone cold foam mattress creates the perfect environment for sleeping and a high degree of comfort for sleeping and resting. The tubular system allows active ventilation. The different hardness zones are tailored to the respective body areas. Odor-inhibiting and suitable for allergy sufferers.

| | |
|------------------|--|
| Product benefits | Optimized sleeping conditions due to breathable tube system; excellent durability due to permanent supporting force of the cold foam and hard-wearing removable and washable cover; increased sleeping and resting comfort due to individual support of various body parts by means of the multi-zone cold-foam mattress |
| Dimensions | Matratzenstärke ca. 11 cm, 75 cm breit und 200 cm lang |
| Package contents | Incl. quilted cover |
| Property | Cover removable and washable, quilted with knitted double fabric, padded, breathable, suitable for allergy sufferers, odor-inhibiting |

| Article designation | Vehicle | Part number |
|---|---------|-----------------|
| „PremiumComfort“ mattress (Code D3N), for cab width 2.5 m | Ac4 | A 000 970 87 49 |
| „PremiumComfort“ mattress (Code D3N), for cab width 2.3 m | Ac4 | A 000 970 95 49 |

Molton overlays and fitted sheets



B6 787 2050, B6 787 2118

The snug molton padding protects the mattress, stores moisture and improves comfort when lying down.

| Molton padding | | |
|-----------------------------|-------------------------|-------------|
| Material | 100 % cotton | |
| Property | Washable at up to 95 °C | |
| Article designation | Vehicle | Part number |
| Molton padding, 60 x 200 cm | Ac3, Ac2 | B6 787 2118 |
| Molton padding, 80 x 200 cm | Ac3, Ac2 | B6 787 2119 |



B6 787 3696

Excellent sleeping comfort: elasticated fitted sheets for perfect fit.

| Fitted bed sheets in barely inflammable quality | | |
|---|---------|-------------|
| Article designation | Vehicle | Part number |
| Upper bed, narrow, 60 x 200 cm | Ac4 | B6 787 3696 |
| Upper/lower bed, 75 x 200 cm | Ac4 | B6 787 3697 |
| Upper bed, narrow, 60 x 220 cm | Ac4 | B6 787 3698 |
| Upper/lower bed, 75 x 220 cm | Ac4 | B6 787 3699 |

| Fitted bed sheets in fine jersey quality made from pure, high-quality cotton | | |
|--|----------------------------|-------------|
| Article designation | Vehicle | Part number |
| Lower bunk, 60 x 195 cm | Ac3, Ac2 | B6 787 2050 |
| Lower bunk, 50 x 202 cm | Ac3, Ac2 | B6 787 2051 |
| Upper bunk, 80 x 202 cm | Ac3, Ac2 | B6 787 2052 |
| Lower bunk, 60 x 202.5 cm | Ac3, Ac2 | B6 787 2053 |
| Upper bunk, 70 x 186.5 cm | Ax3, Ax2, At4, At3, At2 | B6 787 2445 |
| Lower bunk, 68.5 x 210 cm | Ax3, Ax2, At4, At3, At2 | B6 787 2447 |
| Upper bunk, 90 x 220 cm | Ac4, An | B6 787 3702 |

Dash support trim



B6 667 2238



B6 667 2239

For that personal touch.

| | |
|------------------|------------------------------|
| Product benefits | Customization of the cockpit |
| Installation | Clip-mounted |

Elegant coolness in brushed aluminum look. Be the epitome of splendid modern taste and get yourself raring to go right as you get in the car. Customize your cockpit with the aluminum decor for the pod.

| | |
|----------------------------------|---------------|
| Dash support trim, aluminum look | |
| Version | Aluminum look |

| Article designation | Vehicle | Part number |
|---|----------|-------------|
| Tachograph component without headlamp range control | Ac3, Ac2 | B6 667 2238 |
| Center air vent with slot | Ac3, Ac2 | B6 667 2250 |
| Center air vent with switch | Ac3, Ac2 | B6 667 2252 |

Cab in Home-Line design. From the dashboard and fan center air vents to the full wood/leather steering wheel with cowhide leather for good grip, the burl wood decor has a warm, homely and simply noble appearance.

| | |
|------------------------------|----------------|
| Dash support trim, fine wood | |
| Version | Fine wood look |

| Article designation | Vehicle | Part number |
|---|----------|-------------|
| Tachograph component without headlamp range control | Ac3, Ac2 | B6 667 2239 |
| Tachograph component with headlamp range adjustment | Ac3, Ac2 | B6 667 2249 |
| Center air vent with slot | Ac3, Ac2 | B6 667 2251 |
| Center air vent with switch | Ac3, Ac2 | B6 667 2253 |

Steering wheels



B6 626 0337



B6 626 0341

Sporty or elegant: top quality 4-spoke leather steering wheel with material combinations that provide a very special driving experience.

| | |
|------------------|--|
| Product benefits | Good grip due to the perforated leather in the gripping area, natural materials compensate for extreme heat and cold and provide a pleasant temperature feeling on the hands |
| Material | Made from cowhide leather for good grip, with coated plastic application |
| Diameter | 450 mm |
| Note | The impact absorber from the current steering wheel must be used. Only suitable for vehicles that have a steering wheel diameter of 450 mm ex works |

Steering wheels, aluminum look

| | | |
|---------------------------------------|----------------|-------------|
| Version | Aluminum decor | |
| Article designation | Vehicle | Part number |
| Aluminum-leather steering wheel | Ac4, An | B6 626 0337 |
| Aluminum decor leather steering wheel | Ac3, Ac2 | B6 626 0295 |

Steering wheels, fine wood

| | | |
|--|------------|-------------|
| Version | Wood decor | |
| Article designation | Vehicle | Part number |
| Wood/leather steering wheel | Ac4, An | B6 626 0341 |
| Burl wood decor leather steering wheel | Ac3, Ac2 | B6 626 0283 |

TopFit set

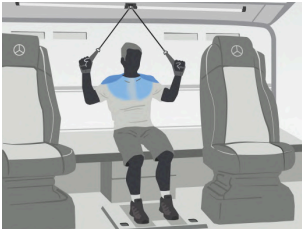


Making a top fit start: keeping fit in your driver's cab is no problem with the TopFit set. For better performance at the steering wheel and a strong and healthy body. Neck, shoulder and back problems can be alleviated in a targeted way and optimum prevention provided. The TopFit set makes many exercises for all important muscle groups possible.

| | |
|------------------|--|
| Package contents | Bag for space-saving storage, Top Fit Board, various expanders incl. handles, USB stick with training instructions |
| Dimensions | 65 x 40 cm |
| Validity | Does not only fit in the Actros, but in all truck models with level cab floors |
| Note | No assembly required - simply attach the expander to the existing eyelets in the cab or the TopFit board, which is stabilized by your weight |



B6 626 0350



Additional ashtray



A 960 810 04 30 9051

Never burns anything: removable additional ashtray with lift-up lid. For the beverage holder on the driver and front passenger side.

| Material | | Polyamide |
|---------------------|-------------|----------------------|
| Article designation | Vehicle | Part number |
| Additional ashtray | Ac4, An, Ar | A 960 810 04 30 9051 |

Windows insulating mat



Protective shield: Seven-layer window insulating mat to protect against cold or heat. Also suitable for shading the cab.

| | |
|------------------|--|
| Installation | Easy mounting to windows in the interior with preassembled suction cups |
| Package contents | 3-piece, custom-fit set for front and side window panes, including black Mercedes-Benz storage bag |
| Product benefits | Year round protection against cold and winter; creates a pleasant interior temperature, shades the cab |

| Article designation | Vehicle | Part number |
|-----------------------|---------------|-------------|
| Window insulating mat | Ac4, Ac3, Ac2 | B6 753 0020 |

Windows



B6 753 0020

Roller sunblinds



A 943 810 13 20

Optimum heat insulation on hot days: the roller sun blind reduces heat penetration and dazzling effect in sunlight, thereby ensuring greater safety and comfort. The roller blind is mounted onto the window frame and covers almost the entire width of the side window. It is guided at the left and right using metal rods, and it is manually height adjustable. The wide-angle rear-view mirror is not covered up, the rear-view mirror only partially.

| | |
|------------------|--|
| Package contents | Without installation kit |
| Note | Retrofitting is possible with ease in Actros beginning from September 2007 |

| Article designation | Vehicle | Part number |
|---|----------|-----------------|
| Roller sunblind on driver's side (Code FS4) | Ac3, Ac2 | A 943 810 13 20 |
| Roller sunblind on front passenger side | Ac3, Ac2 | A 943 810 14 20 |
| Dowel | Ac3, Ac2 | A 000 988 84 25 |
| Sheet metal screw 4,8 x 25 | Ac3, Ac2 | N000000 000464 |
| Cap 12.5 mm | Ac3, Ac2 | A 943 811 00 61 |
| Driver's side roller sunblind | Ac1 | B6 626 0224 |

Rubber floor mats



B6 684 8625



B6 768 0157

Floor mats

Decorative protection: The hard-wearing floor mats protect the interior from becoming damaged or soiled. The material creates a pleasant living and working atmosphere. No slipping thanks to back coating. Available in different materials for all cab and seat variants. It is characterized by its simple cleaning.

| | |
|-------------------------|--|
| Product benefits | Custom-fit for the cab, high-quality appeal, high wear resistance and resistance to oil, cleaning of cab made easier |
| Note | Cab width: 2.3 m (code F2G) or 2,5 m (code F2H) |

| Left-hand drive vehicle | | |
|---|-------------|-------------|
| Article designation | Vehicle | Part number |
| 2.5 m | Ac4, Ar | B6 684 8625 |
| 2.3 m, with a tunnel, set driver's/co-driver's side (code F2B or F2C) | Ac4, An, Ar | B6 684 8626 |
| 2.3 m, with a tunnel, set driver's/co-driver's side (code F2E) | Ac4, An, Ar | B6 684 8627 |
| 2.3 m, level surface, driver's/co-driver's side (code F2A)# | Ac4, An, Ar | B6 684 8628 |

| Right-hand drive vehicle | | |
|---|-------------|-------------|
| Article designation | Vehicle | Part number |
| 2.3 m, with a tunnel (code F2E) | Ac4, An, Ar | B6 684 8630 |
| 2.3 m, with a tunnel, set driver's/co-driver's side (code F2B or F2C) | Ac4, An, Ar | B6 684 8631 |

| Left-hand drive vehicle | | |
|---|----------|-------------|
| Article designation | Vehicle | Part number |
| MegaSpace cab, driver's side | Ac3, Ac2 | B6 768 0157 |
| MegaSpace cab, co-driver's side, reclining seat | Ac3, Ac2 | B6 768 0158 |
| MegaSpace cab, function seat | Ac3, Ac2 | B6 768 0165 |
| S, M, L cab, driver's side | Ac3, Ac2 | B6 768 0159 |
| S, M, L cab, co-driver's side, reclining seat | Ac3, Ac2 | B6 768 0160 |
| S, M, L cab, co-driver's side, folding seat | Ac3, Ac2 | B6 768 0166 |

Rubber floor mats

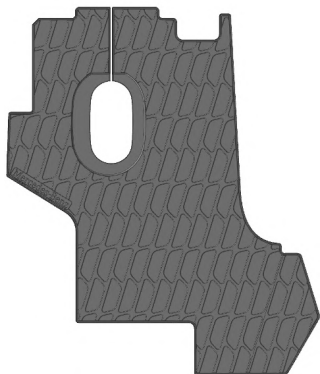


B6 768 0118

Pulled up surrounding edge protects the footwell against soiling, driver mat with textile wear protection in heel area.

| | |
|------------------|--|
| Product benefits | Custom-fit for the cab, high-quality appeal, high wear resistance and resistance to oil, cleaning of cab made easier |
| Color | Anthracite |
| Material | Hard-wearing natural rubber |

| Left-hand drive vehicle | | |
|-------------------------|-------------------------|-------------|
| Article designation | Model series | Part number |
| Driver's side | At4, At3, At1, Ax2, Ax1 | B6 768 0118 |
| Co-driver's side | At4, At3, At1, Ax2, Ax1 | B6 768 0119 |
| Center mat | At4, At3, At1, Ax2, Ax1 | B6 768 0120 |
| Driver's side | Eco | B6 768 0130 |
| Co-driver's side | Eco | B6 768 0136 |
| Center mat | Eco | B6 768 0135 |



B6 768 0143

The profiled, oil-resistant rubber floor mats are matched to the floor contours on the driver's and passenger side as well as the size of the cab.

| | |
|------------------|--|
| Product benefits | Custom-fit for the cab, high-quality appeal, high wear resistance and resistance to oil, cleaning of cab made easier |
| Color | Anthracite |
| Material | Hard-wearing natural rubber |

| Left-hand drive vehicle | | |
|-------------------------|---------|-------------|
| Article designation | Vehicle | Part number |
| Driver's side | Econ | B6 768 0143 |
| Center mat | Econ | B6 768 0144 |
| Co-driver's side | Econ | B6 768 0145 |

| Right-hand drive vehicle | | |
|--------------------------|---------|-------------|
| Article designation | Vehicle | Part number |
| Driver's side | Econ | B6 768 0146 |
| Center mat | Econ | B6 768 0144 |
| Co-driver's side | Econ | B6 768 0147 |

Ribbed floor mats



B6 768 1330

Refinement of vehicle interior: ribbed floor mats cut to size for custom fit in cab.
With Mercedes-Benz emblem.

| | |
|-------------------------|---|
| Product benefits | Non-skid back, easier cleaning of interior; suitable for steam cleaning |
| Color | Anthracite gray |
| Material | 100 % polypropylene |
| Note | Cab width: 2.3 m (code F2G) or 2,5 m (code F2H) |

Left-hand drive vehicle

| Article designation | Vehicle | Part number |
|--|-------------|-------------|
| All cab widths:, driver's side with a level surface (code F2A) | Ac4, An, Ar | B6 768 1330 |
| 2.5 m, co-driver's side, SoloStar (code DOZ) | Ac4 | B6 768 1331 |
| 2.5 m, co-driver's side, suspension seat (code D1P or D1Q) | Ac4, Ar | B6 768 1332 |
| 2.5 m, co-driver's side, function seat (code F2A + D1N) | Ac4, Ar | B6 768 1333 |
| 2.5 m, center mat (code F2A) | Ac4 | B6 768 1345 |
| 2.3 m, co-driver's side, function seat (code F2B or F2C or F2E) | Ac4, An, Ar | B6 768 1336 |
| 2.3 m, driver's side (code F2B or F2C or F2E) | Ac4, An, Ar | B6 768 1337 |
| 2.3 m, co-driver's side, suspension seat (code F2A + D1P or D1Q) | Ac4, An, Ar | B6 768 1334 |
| 2.3 m, co-driver's side, function seat (code F2A + D1N) | Ac4, An, Ar | B6 768 1335 |
| 2.3 m, center mat (code F2A) | Ac4 | B6 768 1347 |
| 2.3 m, center mat (code F2B or F2C or F2E) | Ac4 | B6 768 1348 |
| Driver's side | At4 | B6 768 3211 |
| Co-driver's side | At4 | B6 768 3212 |

Right-hand drive vehicle

| Article designation | Vehicle | Part number |
|--|-------------|-------------|
| All cab widths:, driver's side with a level surface (code F2A) | Ac4, An, Ar | B6 768 1350 |
| 2.5 m, co-driver's side, suspension seat (code D1P or D1Q) | Ac4, Ar | B6 768 1351 |
| 2.5 m, co-driver's side, function seat (code D1N) | Ac4, Ar | B6 768 1352 |
| 2.5 m, level surface, center mat (code F2A) | Ac4 | B6 768 1356 |
| 2.3 m, co-driver's side, suspension seat (code D1P or D1Q) | Ac4, An, Ar | B6 768 1353 |
| 2.3 m, co-driver's side, function seat (code D1N) | Ac4, An, Ar | B6 768 1354 |
| 2.3 m, driver's side (code A1Z) | Ac4 | B6 768 1358 |
| 2.3 m, with tunnel, driver's side (code F2B or F2C) | Ac4, An, Ar | B6 768 1355 |
| 2.3 m, center mat (code F2B) | Ac4, An | B6 768 1357 |

Ribbed floor mats



Ribbed floor mats cut to size for custom fit in cab. Driver floor mat reinforced in pedal area with plastic wear protection.

| | |
|------------------|--|
| Product benefits | Nonskid back, easier cleaning of interior, suitable for steam cleaning |
| Color | Anthracite gray |
| Material | 100 % polypropylene |

Left-hand drive vehicle

| Article designation | Vehicle | Part number |
|---|-------------------------|-------------|
| MegaSpace cab, driver's side | Ac3, Ac2 | B6 768 3200 |
| MegaSpace cab, co-driver's side, function seat | Ac3, Ac2 | B6 768 3201 |
| MegaSpace cab, co-driver's side, reclining seat | Ac3, Ac2 | B6 768 3202 |
| MegaSpace cab, co-driver's side, single cab | Ac3, Ac2 | B6 768 3203 |
| Megaspace cab, center mat | Ac3, Ac2, Ac1 | B6 768 3204 |
| S, M, L cab, driver's side | Ac3, Ac2, Ac1 | B6 768 3205 |
| S, M, L cab, co-driver's side, function seat | Ac3, Ac2, Ac1 | B6 768 3206 |
| S, M, L cab, co-driver's side, reclining seat | Ac3, Ac2, Ac1 | B6 768 3207 |
| S, M, L cab, co-driver's side, single cab | Ac3, Ac2, Ac1 | B6 768 3208 |
| S, M, L cab, driver's side | Ac1 | B6 768 3026 |
| S, M, L cab, co-driver's side | Ac1 | B6 768 3027 |
| MegaSpace cab, driver's side | Ac1 | B6 768 3029 |
| MegaSpace cab, co-driver's side | Ac1 | B6 768 3030 |
| MegaSpace cab, center mat | Ac1 | B6 768 3033 |
| Driver's side | At3, At2, At1, Ax2, Ax1 | B6 768 3049 |
| Co-driver's side | At3, At2, Ax2 | B6 768 3209 |
| Driver's side | Ax1 | B6 768 3024 |
| Co-driver's side | Ax1 | B6 768 3025 |
| Co-driver's side | At1, Ax1 | B6 768 3050 |
| Driver side | Eco | B6 768 3045 |
| Co-driver's side | Eco | B6 768 3046 |



B6 768 3200



B6 768 3205

Velour floor mats



B6 768 1230

High-quality velour floor mats with trim and contrasting topstitching in almond beige. Pearl velour carpet quality, without flex additives and solvent-free. Center mats match the floor mats.

Product benefits Exact fit; non-slip polyurethane adhesive base; cleaning possible with steam cleaning equipment; adhesion properties retained

Note Cab width: 2.3 m (code F2G) or 2,5 m (code F2H)

Left-hand drive vehicle

| Article designation | Vehicle | Part number |
|--|-------------|-------------|
| All cab widths:, driver's side with a level surface (code F2A) | Ac4, An, Ar | B6 768 1230 |
| 2.5 m, co-driver's side, SoloStar (Code DOZ) | Ac4 | B6 768 1231 |
| 2.5 m, co-driver's side, suspension seat (Code D1P or D1Q) | Ac4, Ar | B6 768 1232 |
| 2.5 m, co-driver's side, function seat (code F2A + D1N) | Ac4, Ar | B6 768 1233 |
| 2.5 m, center mat (code F2A) | Ac4 | B6 768 1245 |
| 2.3 m, co-driver's side, suspension seat (code F2A + D1P or D1Q) | Ac4, An, Ar | B6 768 1234 |
| 2.3 m, co-driver's side, function seat (code F2A + D1N) | Ac4, An, Ar | B6 768 1235 |
| 2.3 m, co-driver's side, function seat (code F2B or F2C or F2E) | Ac4, An, Ar | B6 768 1236 |
| 2.3 m, driver side (code F2B or F2C or F2E) | Ac4, An, Ar | B6 768 1237 |
| 2.3 m, flat center mat (Code F2A) | Ac4 | B6 768 1247 |
| 2.3 m, center mat (code F2B or F2C or F2E) | Ac4, An | B6 768 1248 |
| S, M, L cab, driver's side | Ac3, Ac2 | B6 768 1203 |
| S, M, L cab, co-driver's side, function seat | Ac3, Ac2 | B6 768 1204 |
| MegaSpace cab, driver's side | Ac3, Ac2 | B6 768 1205 |
| MegaSpace cab, function seat | Ac3, Ac2 | B6 768 1206 |
| MegaSpace cab, co-driver's side, reclining seat | Ac3, Ac2 | B6 768 1207 |
| MegaSpace cab, co-driver's side, single cab | Ac3, Ac2 | B6 768 1208 |
| MegaSpace cab, center mat | Ac3, Ac2 | B6 768 1209 |
| S, M, L cab, co-driver's side, reclining seat | Ac3, Ac2 | B6 768 1210 |
| S, M, L cab, co-driver's side, single cab | Ac3, Ac2 | B6 768 1211 |
| Center mat, low tunnel | Ac3, Ac2 | B6 768 1212 |

Velour floor mats



B6 768 1200



B6 768 1219

High-quality velour floor mats with leather border. Pearl velour carpet quality, without flex additives and solvent-free. Center mats match the floor mats.

| | |
|-------------------------|--|
| Product benefits | Exact fit; non-slip polyurethane adhesive backing; flame-retardant materials; can be cleaned with a steam jet device; adhesive properties are retained |
|-------------------------|--|

| Left-hand drive vehicle | | |
|--|------------------------------|-------------|
| Article designation | Vehicle | Part number |
| S, M, L cab, driver's side | Ac1 | B6 768 1021 |
| S, M, L cab, co-driver's side, with footrest | Ac1 | B6 768 1023 |
| MegaSpace cab, driver's side | Ac1 | B6 768 1024 |
| MegaSpace cab, co-driver's side | Ac1 | B6 768 1025 |
| Center mat | Ac1 | B6 752 1026 |
| Driver's side | At4, At3, At2, At1, Ax3, Ax2 | B6 768 1216 |
| Co-driver's side | At4, At3, At2, At1, Ax3, Ax2 | B6 768 1213 |
| Large center mat, tunnel insert | At4, At3, At2, At1, Ax3, Ax2 | B6 768 1215 |
| Small center mat, tunnel insert | At4, At3, At2, At1, Ax3, Ax2 | B6 768 1214 |
| Center mat | Ax3, Ax2 | B6 768 1218 |
| Center mat, tunnel insert | Ax1 | B6 768 1202 |
| Driver's side | Ax1 | B6 768 1200 |
| Co-driver's side | Ax1 | B6 768 1201 |

| | |
|-------------|--------------------------|
| Note | Setting in brown leather |
|-------------|--------------------------|

| Left-hand drive vehicle | | |
|--|----------|-------------|
| Article designation | Vehicle | Part number |
| MegaSpace cab, driver's side, Isri, suspension seat | Ac3, Ac2 | B6 768 1220 |
| MegaSpace cab, co-driver's side, Isri, suspension seat | Ac3, Ac2 | B6 768 1219 |
| MegaSpace cab, driver's side | Ac3, Ac2 | B6 768 1225 |
| Megaspace cab, co-driver's side | Ac3, Ac2 | B6 768 1226 |



A 967 830 00 60 7D53



B6 667 2040

The refrigerator box enables bottles and food to be transported separately from each other. The two-piece lid on the refrigerator box is also a document holder or a step to the upper bed. The refrigerator box is permanently mounted between the driver and the front passenger seat on the engine tunnel. Integrated into the two-piece lid is a clamping device for fixing paper. Four upright 1.5-liter bottles can be stored in their own cooling segment in the illuminated refrigerator box. The second, separated cooling segment can be used for food. A control panel on the rear can be used to activate the refrigerator box and set the inside temperature. A battery rundown protection system is installed. The cooling output can be regulated using a thermostat - irrespective of the ambient temperature.

Compressor cool box

| | |
|--------------------------|---|
| Product benefits | Increases driver's comfort and wellbeing; enables compilation of an individual trip schedule, as driver is not forced to visit rest areas that provide food and drink |
| Cab | S, L cab |
| Operating voltage | 12/24 V; average power consumption: approx. 35 W (!!!) |
| Weight | 12 kg |
| Dimensions | (L x W x H) approx. 550 x 260 x 440 mm |
| Capacity | Approx. 23 l |

| Article designation | Vehicle | Part number |
|--|--------------------|----------------------|
| Compressor refrigerator box (code F84) | Ac4, At3, At2, Ax2 | A 967 830 00 60 7D53 |
| Mounting kit for Axor 3 and Atego 3 | Ac4, At3, At2, Ax2 | A 967 830 00 14 |

Mobile refrigerator box

Cooling and heating in a thermo-electric refrigerator box with removable lid and energy-saving circuit.

| | |
|--------------------------|---|
| Temperature range | Cooling: 1 °C to 15 °C; heating: 50 °C to 65 °C |
| Weight | 5 kg |
| Dimensions | (L x W x H) approx. 450 x 420 x 300 mm |
| Capacity | 21 l |

| Article designation | Vehicle | Part number |
|-------------------------|---|-------------|
| Mobile refrigerator box | Ac4, Ac3, Ac2, Ac1, AN, AR, At4, At3, At2, At1, Ax3, Ax2, Ax1 | B6 667 2040 |

Refrigerator, in the drawer/under bed (code Y1X)



Even optimal storage when on the move: the refrigerator in the drawer under the bed ensures the ideal cooling temperature for drinks and food. It is activated using a switch on the dashboard. The cooling output can be adjusted by a thermostat, regardless of the ambient temperature.

| | |
|------------------------|---|
| Product benefits | Discharge protection for the battery; more stowage space; optimal height so that even 1.5 liter bottles can be transported in an upright position; increased level of comfort and well-being thanks to access to chilled drinks and food on the move; simplifies any movement in the cockpit and can be used while driving thanks to the sliding design; provides more independence from the often expensive offers found at service stations |
| Operating voltage | 24 V |
| Weight | 11 kg |
| Capacity | approx. 36 liters |
| Temperature range | +5°C to +13°C |
| Installation position | The refrigerator in the drawer under the bed is activated using a switch on the dashboard |
| Additional information | Only for vehicles with drawers, under bed (code D7J)), not in combination with SoloStar Concept (code D0Z) |

| Article designation | Vehicle | Part number |
|---|---------|-----------------|
| For vehicles with pre-installation for refrigerator (code Y9A) and with L cab with flat floor (code F1H, F1I, F1J) | Ac4, Ar | A 000 820 98 06 |
| For vehicles without pre-installation for refrigerator (code Y9A) and with L-cab with even floor (code F1H, F1I, F1J) | Ac4, Ar | A 000 820 99 06 |
| For vehicles without pre-installation for refrigerator (code Y9A) and with 170 mm tunnel (code F1D, F1E) | Ac4, Ar | A 001 820 06 06 |

Microwave 24 Volt



B6 626 0361

Meals on wheels: the microwave with 17 L of cooking space allows for the easy and convenient preparation of warm meals. With LED interior lighting, three cooking levels, a defrost function and a user-friendly control panel with large symbols. Specially for use in the driver's cab of a truck, roadworthy and vibration tested. This fits into the upper stowage compartment in GigaSpace/MegaSpace driver's cabs.

| | |
|-----------------------|---|
| Technical data | 24 Volt, 500 Watt, Operating frequency 2450 MHz |
|-----------------------|---|

| | |
|------------------|--|
| Dimension | (HxWxD) 279x445x335 mm outside, (HxWxD) 181x278x280 mm inside |
|------------------|--|

| | |
|---------------|--------|
| Weight | 9.8 kg |
|---------------|--------|

| | |
|-------------|--|
| Note | In combination with E9G for Actros 4 - Preinstallation for electrical devices. Preinstallation for electrical devices can also be retrofitted |
|-------------|--|

| Article designation | Vehicle | Part number |
|---------------------|---------------|-------------|
| Microwave 24 Volt | Ac4, Ac3, Ac2 | B6 626 0361 |

Electric kettle



B6 626 0312

Relaxed breaks: With this easy-to-handle water boiler, which has been design specifically for use in a vehicle, water for a pot of tea, a cup of broth or a soup can be made hot in an instant.

| | |
|--------------------------|------|
| Operating voltage | 24 V |
|--------------------------|------|

| | |
|----------|----------------|
| Capacity | Approx. 0.75 l |
|----------|----------------|

| | |
|------------|--------------------------------|
| Dimensions | (W x H x D) 190 x 205 x 125 mm |
|------------|--------------------------------|

| | |
|------------------|---|
| Package contents | Incl. Mounting kit for wall and floor mounting, with power connector |
|------------------|---|

| | |
|-------------|--|
| Note | In Actros 4 in combination with Code E3R, 24 V / 25 A power socket, power socket can also be retrofitted |
|-------------|--|

| Article designation | Vehicle | Part number |
|---------------------|-----------------------|-------------|
| Electric kettle | Ac4, Ac3, Ac2, AN, AR | B6 626 0312 |

Digital clock



A 000 827 78 70

Always on time: the digital LCD clock with intermittent alarm tone (approx. 75 dB volume) ensures correct timing on the go.

| | | |
|---------------------|---|-----------------|
| Product benefits | Fixed, easy installation; minimalistic design | |
| Installation | Easy installation behind the driver's seat by removing the cover and inserting with custom fit; fits into any free cockpit switch panel or into the stowage tray above the windshield | |
| Dimensions | Length approx. 100 mm | |
| Package contents | Incl. 2 Standard AA batteries | |
| Temperature range | -10°C to +50°C | |
| | | |
| Article designation | Vehicle | Part number |
| Digital clock | Ac4 | A 000 827 78 70 |

Footrest cushion



B6 626 0332

Relaxation for the legs - ideal in combination with the SoloStar Concept (Code DOZ) of Actros. The footrest cushion fits exactly into the stowage area of the center console.

| | | |
|---------------------|---|-------------|
| Product benefits | Soft base for resting feet on at the end of the working day or during a break | |
| Material | Imitation leather, washable | |
| Color | Almond beige | |
| | | |
| Article designation | Vehicle | Part number |
| Footrest cushion | Ac4 | B6 626 0332 |

Interior

Handheld vacuum cleaner



B6 683 0011

Spotlessly clean in a flash: The Vacuboy vacuum cleaner ensures your cab is kept clean and tidy in next to no time at all. The three-stage turbine guarantees high suction power at low power consumption. Variable usage.

| | |
|-------------------|---|
| Operating voltage | 24 / 220 V switchable |
| Package contents | Hand-held vacuum cleaner, textile dust bag, micro-motor dust filter, upholstery nozzle, crevice nozzle, brush attachment, power cable 24 V, power cable 220 V |

| Article designation | Vehicle | Part number |
|--------------------------|----------------------|-------------|
| Hand-held vacuum cleaner | For all model series | B6 683 0011 |

Towel holder



B6 667 2033

All dry and tidy: The towel holder is a practical and professional solution for everyone frequently out on the road for a longer period of time. For drying bath and hand towels.

| | |
|------------------|---|
| Product benefits | Extension of stowage options offered in the cab |
| Installation | Easy to attach in roof area |

| Article designation | Vehicle | Part number |
|---------------------|--------------------|-------------|
| Towel holder | Ac3, Ac2, At2, Ax2 | B6 667 2033 |

Care kit



B6 684 8618

Brilliant gloss and clear visibility: The care set contains many care products that you will need when cleaning your vehicle - both on the outside and the inside.

| | |
|------------------|---|
| Product benefits | Specifically developed for Mercedes-Benz vehicles; tested for material and environmental compatibility |
| Package contents | Cockpit lotion, insect remover, window cleaner for inside, fast-acting cleaner, polishing cloth, pocket |
| Note | Chrome care is not part of the care kit B6 684 8618; please order separately |

| Article designation | Vehicle | Part number |
|---------------------|------------------|-----------------|
| Care kit | All model series | B6 684 8618 |
| Chrome care | All model series | A 000 986 43 74 |



Mercedes-Benz ServiceContracts

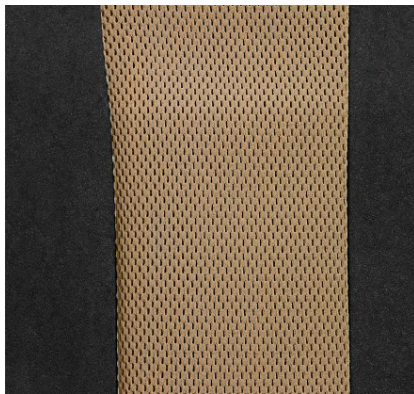
Your success is our drive - Tailored modular and international service agreements.



Advantages at a glance:

- Selection from 7 modularly structured Mercedes-Benz ServiceContracts: from MB Uptime to warranty extensions and maintenance contracts and up to complete service
- Predictable monthly installments as well as increased availability of vehicles thanks to shorter non-operational times
- Concentration on your core business thanks to administrative relief
- Convenient settlement in a pan-European service network with approximately 2,700 workshops

Protective seat covers, climate-controlled seats



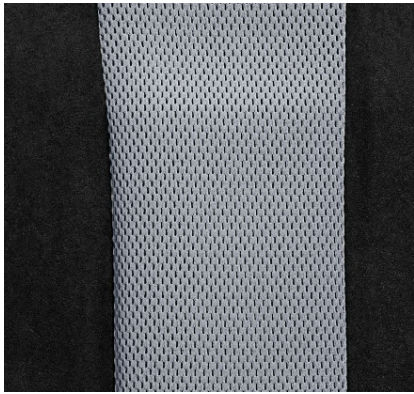
beige/black

Perfect protection and the best comfort: The protective covers protect the seats against wear, damage and dirt. They also impressive by providing pleasant comfort when sat on. Simple and non-slip assembly.

| | |
|--------------|--|
| Installation | Easy attachment with zipper |
| Property | Protective covers especially for climate-controlled seats: ensures optimal climate control |

Breathable, beige/black

| Article designation | Vehicle | Part number |
|---|-------------|-------------|
| Grammer climate suspension seat, front left (code D1D) | Ac4, An, Ar | B6 640 1277 |
| Grammer climate suspension seat, front right (code D1Q) | Ac4, An, Ar | B6 640 1278 |

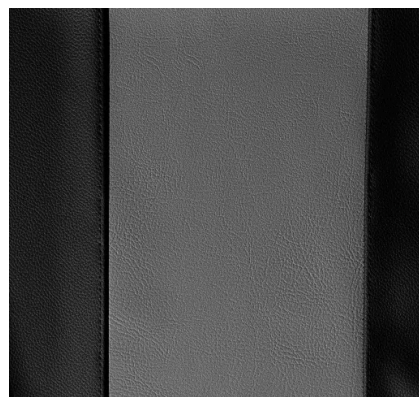


Gray/black

Breathable, gray/black

| Article designation | Vehicle | Part number |
|---|-------------|-------------|
| Grammer climate suspension seat, front left (code D1D) | Ac4, An, Ar | B6 640 1275 |
| Grammer climate suspension seat, front right (code D1Q) | Ac4, An, Ar | B6 640 1276 |

Protective seat covers, imitation leather

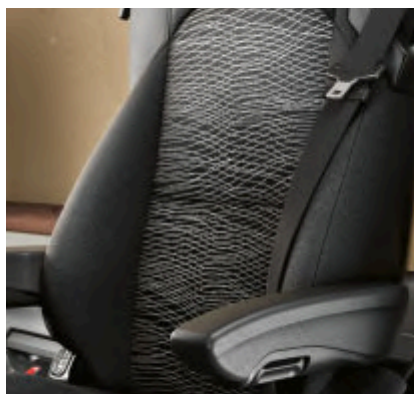


Gray/black

Perfect protection and maximum comfort: The protective covers protect the seats from wear, damage and contamination. Furthermore, they are wonderfully comfortable to sit on. Simple assembly that ensures that they will not slip.

| Installation | | Easy attachment with zipper |
|---|-------------|-----------------------------|
| Article designation | Vehicle | Part number |
| Grammer suspension seat, front left (code D1B, D1C) | Ac4, An, Ar | B6 640 1270 |
| Grammer suspension seat, front right (code D1P) | Ac4, An, Ar | B6 640 1271 |
| Co-drivers seat, Isri function seat, front right (code D1N) | Ac4, An, Ar | B6 640 1272 |
| Driver's seat, fixed seat, standard, front left (code D1A) | Ac4, An, Ar | B6 640 1273 |
| Grammer center seat (code D1Z) | Ac4, An, Ar | B6 640 1274 |

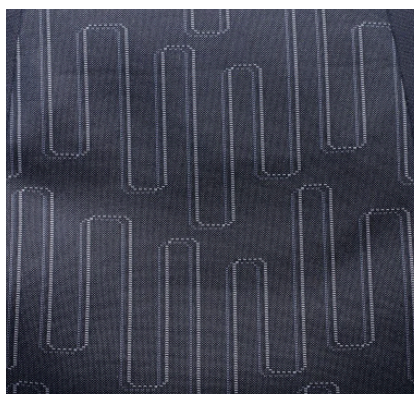
Protective seat covers, series design



Spyder

Elegant, hard-wearing protective covers for all color samples used in series production.

| Installation | Easy attachment with zipper | |
|--|-----------------------------|-------------|
| | | |
| Spyder | | |
| Article designation | Vehicle | Part number |
| Grammer suspension seat, front left (code D1B) | Ac4, An, Ar | B6 640 1360 |
| Grammer suspension seat, front right (code D1P) | Ac4, An, Ar | B6 640 1361 |
| Grammer climate suspension seat, front left (code D1C, D1D) | Ac4, An, Ar | B6 640 1362 |
| Grammer climate suspension seat, front right (code D1Q) | Ac4, An, Ar | B6 640 1363 |
| Grammer center seat (code D1Z) | An, Ar | B6 640 1364 |
| Isri function seat/folding seat, front left (xode D1A) | Ac4, An, Ar | B6 640 1365 |
| Isri function seat/folding seat, front right (code D1N) | Ac4, An, Ar | B6 640 1366 |
| Suspension seat armrest, black (code D1B, D1C, D1P) | Ac4, An, Ar | B6 640 1367 |
| Climate suspension seat armrest, black (code D1D, D1Q) | Ac4, An, Ar | B6 640 1368 |
| Pillow cover, climate suspension seat, black (code D1D, D1Q) | Ac4, An, Ar | B6 640 1369 |



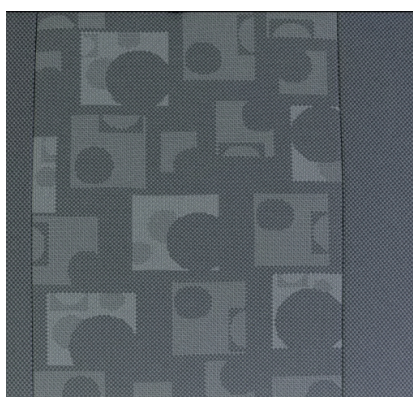
Skyline

| Skyline | | |
|--|-------------|-------------|
| Article designation | Vehicle | Part number |
| Grammer suspension seat, front left (code D1B) | Ac4, An, Ar | B6 640 1370 |
| Grammer suspension seat, front right (code D1P) | Ac4, An, Ar | B6 640 1371 |
| Grammer climate suspension seat, front left (code D1C, D1D) | Ac4, An, Ar | B6 640 1372 |
| Grammer climate suspension seat, front right (code D1Q) | Ac4, An, Ar | B6 640 1373 |
| Grammer center seat (code D1Z) | An, Ar | B6 640 1374 |
| Isri function seat/folding seat, front left (code D1A) | Ac4, An, Ar | B6 640 1375 |
| Isri function seat/folding seat, front right (code D1N) | Ac4, An, Ar | B6 640 1376 |
| Climate suspension seat armrest, black (code D1D, D1Q) | Ac4, An, Ar | B6 640 1368 |
| Pillow cover, climate suspension seat, black (code D1D, D1Q) | Ac4, An, Ar | B6 640 1369 |

Protective seat covers, series design



Brasao



Series design, Actros 2



Series design 5C24

Elegant, hard-wearing seat covers for all color samples used in series production.

Installation Easy attachment with zipper

Brasao

| Article designation | Vehicle | Part number |
|--|---------|-------------|
| Grammer driver's seat, suspension seat | Ac3 | B6 640 1171 |
| Grammer co-driver's side, suspension seat | Ac3 | B6 640 1172 |
| Isri driver's seat, suspension seat, integrated head restraint | Ac3 | B6 640 1173 |
| Isri co-driver's side seat, suspension seat, integrated head restraint | Ac3 | B6 640 1174 |
| Isri co-driver's side seat, function seat/folding seat, left-hand drive vehicle | Ac3 | B6 640 1175 |
| Isri co-driver's side seat, function seat/folding seat, right-hand drive vehicle | Ac3 | B6 640 1176 |

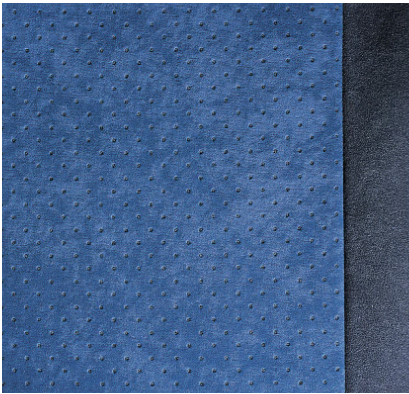
Series design, Actros 2

| Article designation | Vehicle | Part number |
|--|---------|-------------|
| Grammer driver's seat, suspension seat | Ac2 | B6 640 1160 |
| Grammer co-driver's side seat, suspension seat | Ac2 | B6 640 1161 |
| Isri driver's seat, suspension seat | Ac2 | B6 640 1162 |
| Isri co-driver's side seat, suspension seat | Ac2 | B6 640 1163 |
| Co-driver's side seat, folding seat (code SF0/SF1) | Ac2 | B6 640 1164 |
| Co-driver's side seat, function seat/folding seat, right-hand drive vehicle (code SF0/SF1) | Ac2 | B6 640 1165 |

Series design 5C24 Actros 1

| Article designation | Vehicle | Part number |
|---|---------|-------------|
| Isri driver's seat | Ac1 | B6 640 1032 |
| Isri co-driver's side seat | Ac1 | B6 640 1033 |
| Grammer driver's seat | Ac1 | B6 640 1034 |
| Grammer co-driver's side seat | Ac1 | B6 640 1035 |
| Standard co-driver's side seat | Ac1 | B6 640 1036 |
| Head restraint cover | Ac1 | B6 640 1037 |
| Grammer driver's seat, from 07/2000 | Ac1 | B6 640 1139 |
| Grammer co-driver's side seat, from 07/2000 | Ac1 | B6 640 1146 |
| Isri driver's seat, from 01/2001 | Ac1 | B6 640 1152 |

Protective seat covers, accessory design



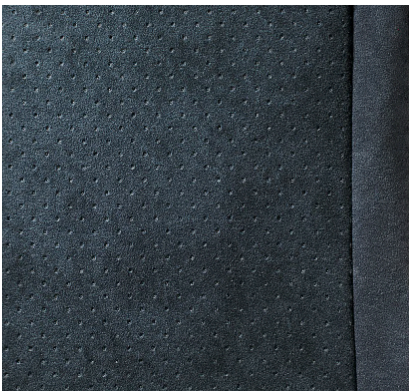
Blue/gray

Perfect protection and maximum comfort: The seat covers protect the seats from wear, damage and soiling. Furthermore, they are wonderfully comfortable to sit on. Simple assembly that ensures that they will not slip.

| | |
|---------------------|-----------------------------|
| Installation | Easy attachment with zipper |
| Material | Microfiber velour |

Microfiber velour, blue/gray

| Article designation | Vehicle | Part number |
|--|---------|-------------|
| Grammer driver's seat, suspension seat | Ac3 | B6 640 1321 |
| Grammer co-driver's side seat, suspension seat | Ac3 | B6 640 1322 |
| Isri driver's seat, suspension seat | Ac3 | B6 640 1327 |
| Isri co-driver's side seat, suspension seat | Ac3 | B6 640 1328 |
| Grammer driver's seat, suspension seat | Ac2 | B6 640 1301 |
| Grammer co-driver's side seat, suspension seat | Ac2 | B6 640 1302 |
| Isri driver's seat, suspension seat | Ac2 | B6 640 1307 |
| Isri co-driver's side seat, suspension seat | Ac2 | B6 640 1308 |
| Co-driver's side seat, function seat/folding seat | Ac2 | B6 640 1313 |
| Co-driver's side seat, right-hand drive vehicle, function seat | Ac2 | B6 640 1317 |



Dark gray/gray

Microfiber velour, dark gray/gray

| Article designation | Vehicle | Part number |
|--|---------|-------------|
| Grammer driver's seat, suspension seat | Ac3 | B6 640 1325 |
| Grammer co-driver's side seat, suspension seat | Ac3 | B6 640 1326 |
| Isri driver's seat, suspension seat | Ac3 | B6 640 1331 |
| Isri co-driver's side seat, suspension seat | Ac3 | B6 640 1332 |
| Grammer driver's seat, suspension seat | Ac2 | B6 640 1305 |
| Grammer co-driver's side seat, suspension seat | Ac2 | B6 640 1306 |
| Isri driver's seat, suspension seat | Ac2 | B6 640 1311 |
| Isri co-driver's side seat, suspension seat | Ac2 | B6 640 1312 |
| Co-driver's side seat, function seat/folding seat | Ac2 | B6 640 1315 |
| Armrest | Ac2 | B6 640 1316 |
| Co-driver's side seat, right-hand drive vehicle, function seat | Ac2 | B6 640 1319 |
| Co-driver's side seat center seat | Ac2 | B6 640 1320 |

Protective seat covers, series design



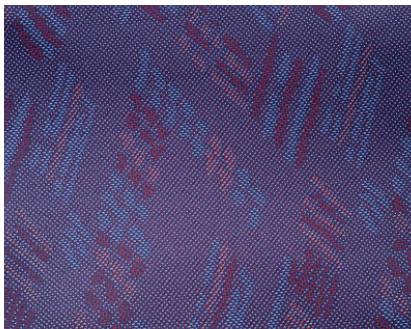
Skyline



Spyder



Series design, Axor 1



Series design 5C20

Elegant, hard-wearing seat covers for all color samples used in series production.

Skyline, flat-weave fabric design, Atego 4

| Article designation | Vehicle | Part number |
|--------------------------------------|---------|-------------|
| Standard seat, front left/right | At4 | B6 640 1500 |
| Center seat | At4 | B6 640 1502 |
| Suspension seat, front left | At4 | B6 640 1503 |
| Suspension seat, front right | At4 | B6 640 1504 |
| Comfort suspension seat, front left | At4 | B6 640 1505 |
| Comfort suspension seat, front right | At4 | B6 640 1506 |

Spyder, Atego 4

| Article designation | Vehicle | Part number |
|--------------------------------------|---------|-------------|
| Standard seat, front left/right | At4 | B6 640 1510 |
| Center seat | At4 | B6 640 1512 |
| Suspension seat, front left | At4 | B6 640 1513 |
| Suspension seat, front right | At4 | B6 640 1514 |
| Comfort suspension seat, front left | At4 | B6 640 1515 |
| Comfort suspension seat, front right | At4 | B6 640 1516 |

Series design, Axor 1

| Article designation | Vehicle | Part number |
|--------------------------------------|---------|-------------|
| Standard seat, front left | Ax1 | B6 640 1223 |
| Suspension seat, front left, Grammer | Ax1 | B6 640 1225 |

Series design 5C20, Atego 1

| Article designation | Vehicle | Part number |
|---|---------|-------------|
| Isri standard seat cover | At1 | B6 640 1201 |
| Isri driver's seat | At1 | B6 640 1202 |
| Isri co-driver's seat | At1 | B6 640 1203 |
| Grammer driver's seat, up to 06/2000 | At1 | B6 640 1204 |
| Grammer co-driver's seat, up to 06/2000 | At1 | B6 640 1205 |
| Center seat | At1 | B6 640 1206 |
| Grammer driver's seat, from 07/2000 | At1 | B6 640 1209 |
| Grammer co-driver's seat, from 07/2000 | At1 | B6 640 1210 |
| Isri seat, left front | At1 | B6 640 1217 |
| Isri co-driver's seat, right front | At1 | B6 640 1218 |
| Isri standard seat, right front | At1 | B6 640 1219 |
| Isri seat, head restraint | At1 | B6 640 1220 |

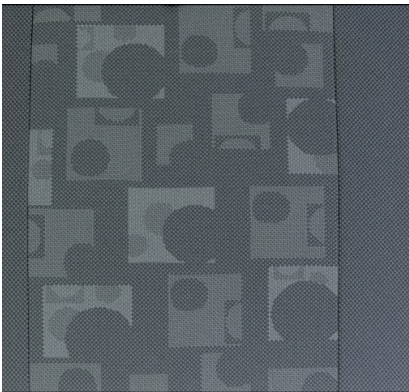
Protective seat covers, series design



Brasao

Elegant, hard-wearing protective covers for all color samples used in series production.

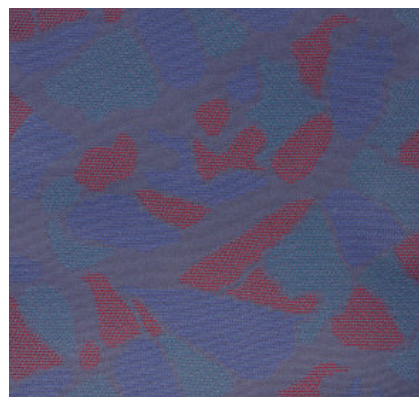
| Installation | Easy attachment with zipper | |
|---|-----------------------------|-------------|
| | | |
| Brasao | | |
| Article designation | Vehicle | Part number |
| Grammer driver seat, suspension seat | At3 | B6 640 1171 |
| Grammer co-driver's seat, suspension seat | At3 | B6 640 1172 |
| Isri driver's seat, suspension seat, integrated head restraint | At3 | B6 640 1173 |
| Isri co-driver's seat, suspension seat, integrated head restraint | At3 | B6 640 1174 |
| Grammer driver's seat, suspension seat | At3 | B6 640 1252 |
| Grammer co-driver's seat, suspension seat | At3 | B6 640 1253 |
| Isri driver seat, with removable head restraint, suspension seat | At2, Ax2 | B6 640 1254 |
| Isri co-driver's seat, with removable head restraint, suspension seat | At2, Ax2 | B6 640 1255 |
| Standard seat belt, B-pillar, fixed seat | At2, Ax2 | B6 640 1256 |
| Seat cover, center seat | At2, Ax2 | B6 640 1257 |
| Isri driver's/co-driver's seat, integrated head restraint, belt guide, B-pillar | At2, Ax2 | B6 640 1258 |



Series design At3, At2, Ax2

| Series design, Atego 3, Atego 2, Axor 2 | | |
|---|----------|-------------|
| Article designation | Vehicle | Part number |
| Grammer driver's seat, suspension seat | At3 | B6 640 1160 |
| Grammer co-driver's seat, suspension seat | At3 | B6 640 1161 |
| Isri driver's seat, suspension seat | At3 | B6 640 1162 |
| Isri co-driver's seat, suspension seat | At3 | B6 640 1163 |
| Co-driver's seat, folding seat (code SF0/SF1) | At3 | B6 640 1164 |
| Co-driver's seat, function seat/folding seat, right-hand drive vehicle (code SF0/SF1) | At3 | B6 640 1165 |
| Isri driver seat, with belt guide, suspension seat | At2, Ax2 | B6 640 1237 |
| Isri co-driver's seat, with belt guide, suspension seat | At2, Ax2 | B6 640 1239 |
| Standard seat belt, B-pillar, fixed seat | At2, Ax2 | B6 640 1242 |
| Center seat with lap belt | At2, Ax2 | B6 640 1243 |

Protective seat covers, series design



Colored Jacquard

Elegant, hard-wearing protective covers for all color samples used in series production.

| | |
|------------------|-----------------------------|
| Installation | Easy attachment with zipper |
| Color | 5C24 |
| Colored Jacquard | |

| | |
|------------------|--|
| Product benefits | Optimum fit, maximum colorfastness factor 6, easy to clean, washable up to 30° C |
|------------------|--|

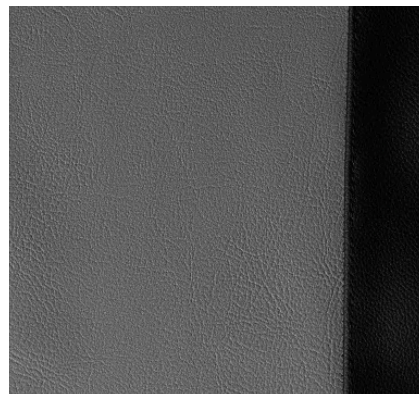
| Article designation | Vehicle | Part number |
|--------------------------|---------|-------------|
| Isri driver's seat | Eco | B6 640 1032 |
| Grammer driver's seat | Eco | B6 640 1034 |
| Grammer co-driver's seat | Eco | B6 640 1035 |



Microfiber velour

| | |
|-------------------|--|
| Microfiber velour | |
| Product benefits | Zippers for quick attachment, washable up to 30 °C |

| Article designation | Vehicle | Part number |
|--|---------|-------------|
| Grammer driver's seat, suspension seat | Eco | B6 640 1160 |
| Isri driver's seat, suspension seat | Eco | B6 640 1162 |
| Co-driver's seat, bench seat | Eco | B6 640 1167 |



Imitation leather

| | |
|-------------------------|--|
| Imitation leather, gray | |
|-------------------------|--|

Custom-fit, mid-gray imitation leather protective covers made of 74 % PVC, 10 % polyester foam, 16 % polyester.

| | |
|------------------|--|
| Product benefits | Easy to cover; dirt-repellent; hard-wearing; easily washable |
|------------------|--|

| Article designation | Vehicle | Part number |
|---------------------|---------|-------------|
| Driver's seat | Eco | B6 640 1136 |
| Co-driver's seat | Eco | B6 640 1137 |
| Co-driver's seat | Eco | B6 640 1168 |

Protective seat covers, accessory design



Beige/black

Perfect protection and maximum comfort: The seat covers protect the seats from wear, damage and soiling. Furthermore, they are wonderfully comfortable to sit on. Simple assembly that ensures that they will not slip.

| | |
|---------------------|-----------------------------|
| Installation | Easy attachment with zipper |
| Material | Microfiber velour |

Microfiber velour, beige/black

| Article designation | Vehicle | Part number |
|--|-------------|-------------|
| Grammer suspension seat, front left (code D1B, D1C) | Ac4, An, Ar | B6 640 1265 |
| Grammer suspension seat, front right (code D1P) | Ac4, An, Ar | B6 640 1266 |
| Isri co-driver's seat, function seat, front right (code D1N) | Ac4, An, Ar | B6 640 1267 |
| Driver's seat, fixed seat, standard, front left (code D1A) | Ac4, An, Ar | B6 640 1268 |
| Grammer center seat (code D1Z) | Ac4, An, Ar | B6 640 1269 |

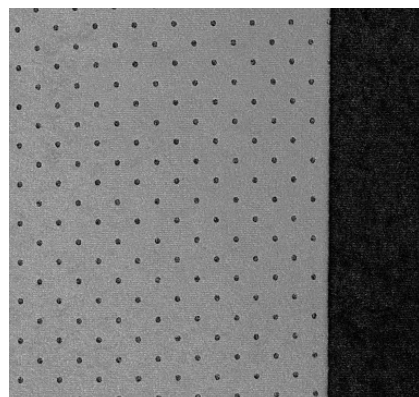


Gray/black

Microfiber velour, gray/black

| Article designation | Vehicle | Part number |
|--|-------------|-------------|
| Grammer suspension seat, front left (code D1B, D1C) | Ac4, An, Ar | B6 640 1260 |
| Grammer suspension seat, front right (code D1P) | Ac4, An, Ar | B6 640 1261 |
| Isri co-driver's seat, function seat, front right (code D1N) | Ac4, An, Ar | B6 640 1262 |
| Driver's seat, fixed seat, standard, front left (code D1A) | Ac4, An, Ar | B6 640 1263 |
| Grammer center seat (code D1Z) | Ac4, An, Ar | B6 640 1264 |

Protective seat covers, accessory design



Gray/black

Perfect protection and the best comfort: The protective covers protect the seats against wear, damage and dirt. They also impressive by providing pleasant comfort when sat on. Simple and non-slip assembly.

| | |
|--------------|-----------------------------|
| Installation | Easy attachment with zipper |
| Material | Microfiber velour |

Microfiber velour, gray/black

| Article designation | Vehicle | Part number |
|---|---------|-------------|
| Front passenger seat, function seat/folding seat, right-hand drive vehicle (Code SF0/SF1) | Ac3 | B6 640 1249 |
| Grammer front passenger seat, suspension seat | Ac2 | B6 640 1247 |
| Isri front passenger seat, suspension seat | Ac2 | B6 640 1248 |

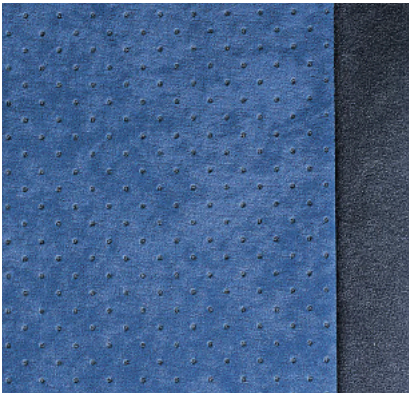


red / gray

Microfiber velour, red/gray

| Article designation | Vehicle | Part number |
|--|---------|-------------|
| Grammer driver's seat, suspension seat | Ac3 | B6 640 1323 |
| Grammer front passenger seat, suspension seat | Ac3 | B6 640 1324 |
| Isri driver's seat, suspension seat | Ac3 | B6 640 1329 |
| Isri front passenger seat, suspension seat | Ac3 | B6 640 1330 |
| Grammer driver's seat, suspension seat | Ac3 | B6 640 1303 |
| Grammer front passenger seat, suspension seat | Ac2 | B6 640 1304 |
| Isri driver's seat, suspension seat | Ac2 | B6 640 1309 |
| Isri front passenger seat, suspension seat | Ac2 | B6 640 1310 |
| Function seat / folding seat | Ac2 | B6 640 1314 |
| Front passenger seat, right-hand drive vehicle | Ac2 | B6 640 1318 |

Protective seat covers, accessory design



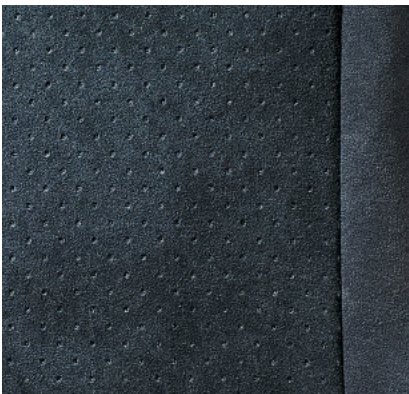
Blue/gray

Perfect protection and maximum comfort: The seat covers protect the seats from wear, damage and soiling. Furthermore, they are wonderfully comfortable to sit on. Simple assembly that ensures that they will not slip.

| | |
|---------------------|-----------------------------|
| Installation | Easy attachment with zipper |
| Material | Microfiber velour |

Microfiber velour, blue/gray

| Article designation | Vehicle | Part number |
|--|--------------------|-------------|
| Isri driver's seat, with removable head restraint and belt guide, suspension seat | At2, Ax2 | B6 640 1232 |
| Isri co-driver's seat, with removable head restraint and belt guide, suspension seat | At2, Ax2 | B6 640 1233 |
| Standard seat belt, B-pillar, fixed seat | At2, Ax2 | B6 640 1234 |
| Center seat | At2, Ax2 | B6 640 1235 |
| Head restraint | At2, Ax2 | B6 640 1236 |
| Grammer driver's seat, suspension seat | At3, At2, Ax3, Ax2 | B6 640 1301 |
| Grammer co-driver's seat, suspension seat | At3, At2, Ax3, Ax2 | B6 640 1302 |
| Isri driver's seat, suspension seat | At3, Ax3 | B6 640 1307 |
| Isri co-driver's seat, suspension seat | At3, Ax3 | B6 640 1308 |

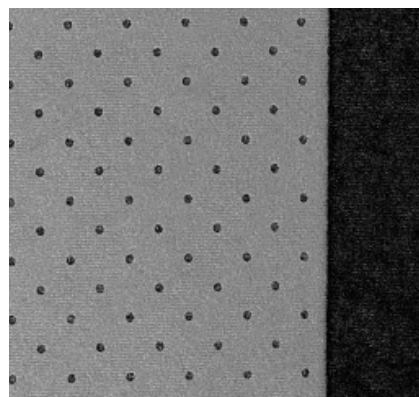


Dark gray/gray

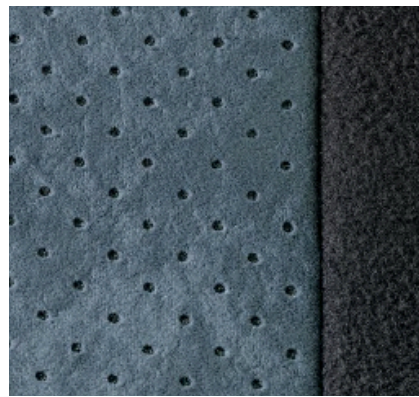
Microfiber velour, dark gray/gray

| Article designation | Vehicle | Part number |
|--|--------------------|-------------|
| Isri driver seat, with removable head restraint and belt guide, suspension seat | At2, Ax2 | B6 640 1228 |
| Isri co-driver's seat, with removable head restraint and belt guide, suspension seat | At2, Ax2 | B6 640 1229 |
| Standard seat belt, B-pillar, fixed seat | At2, Ax2 | B6 640 1230 |
| Center seat | At2, Ax2 | B6 640 1231 |
| Grammer driver's seat, suspension seat | At3, At2, Ax3, Ax2 | B6 640 1305 |
| Grammer co-driver's seat, suspension seat | At3, At2, Ax3, Ax2 | B6 640 1306 |
| Isri driver's seat, suspension seat | At3, Ax3 | B6 640 1311 |
| Isri co-driver's seat, suspension seat | At3, Ax3 | B6 640 1312 |

Protective seat covers, accessory design



Gray/black



Gray/gray



Red/gray

Perfect protection and the best comfort: The protective covers protect the seats against wear, damage and dirt. They also impressive by providing pleasant comfort when sat on. Simple and non-slip assembly.

| | |
|--------------|-----------------------------|
| Installation | Easy attachment with zipper |
| Material | Microfiber velour |

Microfiber velour, gray/black, Easy attachment with zipper

| Article designation | Vehicle | Part number |
|--------------------------------------|---------|-------------|
| Standard seat, front left/right | At4 | B6 640 1520 |
| Center seat | At4 | B6 640 1522 |
| Suspension seat, front left | At4 | B6 640 1523 |
| Suspension seat, front right | At4 | B6 640 1524 |
| Comfort suspension seat, front left | At4 | B6 640 1525 |
| Comfort suspension seat, front right | At4 | B6 640 1526 |

Microfiber velour, gray/gray

| Article designation | Vehicle | Part number |
|---|--------------------|-------------|
| Grammer co-driver's seat, suspension seat | At3, At2, Ax3, Ax2 | B6 640 1247 |
| Isri co-driver's seat, suspension seat | At3, At2, Ax3, Ax2 | B6 640 1248 |
| Isri co-driver's seat without seat belt guide, with integrated head restraint | At3, At2 | B6 640 1250 |

Microfiber velour, red/gray

| Article designation | Vehicle | Part number |
|---|--------------------|-------------|
| Grammer driver's seat, suspension seat | At3, At2, Ax3, Ax2 | B6 640 1303 |
| Grammer co-driver's seat, suspension seat | At3, At2, Ax3, Ax2 | B6 640 1304 |
| Isri driver's seat, suspension seat | At3, Ax3 | B6 640 1309 |
| Isri co-driver's seat, suspension seat | At3, Ax3 | B6 640 1310 |

Protective seat covers, workshop



B6 640 1177

Perfect protection: Protective covers are easy to fit and can be removed again with the flick of a wrist. Ideal protective covering for seats for workshop operations.

| | | |
|---------------------------|--|-------------|
| Product benefits | Dirt, oil and water-repellent; barely inflammable; easy to wash; sanforized (no shrinkage when washed) | |
| | Version | |
| Front left/right | | |
| Article designation | Vehicle | Part number |
| Protective workshop cover | For all truck model series | B6 640 1177 |



MercedesServiceCard

The Mercedes ServiceCard supports you in speedy and cashless settlement of international breakdown cases by Mercedes-Benz Service24h. In addition to this, the Mercedes-Benz workshop network is also available to you without having to exchange cash with the Mercedes ServiceCard.



Other services at a glance:

- Pan-European, universal acceptance at Mercedes-Benz workshops
- Fueling in a pan-European gas station network
- Settlement of all European toll fees
- Standard and transparent invoicing
- No basic card fee, no minimum spend required, no fees levied when used in Mercedes-Benz network

More information at:

www.MercedesServiceCard.com

Back and neck supports



B6 753 0140



B6 753 0141

The Sitback back cushions offer comfort and effective relief for the lumbar spine. Individual setting with pneumatic operation.

| Sitback back supports | | |
|--------------------------|--|-------------|
| Material | Fabric | |
| Installation | Mounting with two brackets between seat cushion and backrest on seat | |
| | | |
| Article designation | Vehicle | Part number |
| Sitback Air back cushion | For all model series | B6 753 0140 |

Sitback neck supports

The neck cushions for all seats with an integrated head restraint ensure a relaxing posture. In addition, they act as additional padding to the existing head restraints.

| | |
|--------------|-----------------------------------|
| Material | Fabric |
| Installation | Easy attachment with velcro strip |

| Article designation | Vehicle | Part number |
|---|----------------------|-------------|
| For integral seats (integrated head restraint) - also suitable for passenger cars | For all model series | B6 753 0141 |
| For attachable head restraints - also suitable for passenger cars | For all model series | B6 753 0142 |

Seat base coverings



B6 768 1250



B6 768 1217



B6 768 1221

Sitting pretty: Anthracite-colored seat base paneling that protects the driver from cold in the winter and enhances the appearance of the interior. Exact fit.

| Velour with black nubuck trim | |
|-------------------------------|--|
| Property | with stitched-on Mercedes star. Edging in black nubuck with contrasting seam in almond beige |
| Material | High-quality pearl velour |
| Color | Anthracite/almond beige |
| Installation | 8 Velcro connections to permit attachment to the seat cushion ensure easy installation and removal |
| Note | Identical for seat bases of driver and front passenger seat |

| Article designation | Vehicle | Part number |
|---------------------|-------------|-------------|
| Seat base covering | Ac4, An, Ar | B6 768 1250 |

| Velour with black cord trim | |
|-----------------------------|---|
| Property | With stitched-on Mercedes star |
| Material | High-quality pearl velour |
| Color | Anthracite/black |
| Installation | 8 velcro connections for attaching to the seat base allow easy assembly and removal |
| Note | |

| Article designation | Vehicle | Part number |
|----------------------------------|---------------|-------------|
| Without cutout for level control | Ac3, Ac2, Ac1 | B6 768 1217 |
| With cutout for level control | Ac3, Ac2, Ac1 | B6 768 1224 |

| Velour with brown leather trim | |
|--------------------------------|---|
| Property | Trim in brown leather with double lapped felling |
| Material | High-quality pearl velour |
| Color | Anthracite/brown |
| Installation | Easy assembly and removal |
| Note | Identical for seat bases of the driver and front passenger seat |

| Article designation | Vehicle | Part number |
|----------------------------------|---------------|-------------|
| Without cutout for level control | Ac3, Ac2, Ac1 | B6 768 1221 |
| With cutout for level control | Ac3, Ac2, Ac1 | B6 768 1223 |

Folding table



A 943 810 01 66

Quickly folded up and put away: The folding table for the co-driver side enables relaxed eating or working during breaks. It has a hard-wearing, washable surface and disappears in one of the stowage compartments when required.

| | |
|-------------------------|--|
| Product benefits | Increases comfort by relaxed fit during eating and work |
| Package contents | Without installation kit |
| Note | Retrofitting the folding table is possible on all Actros 2 and Actros 3 vehicles |
| Weight | 2 kg |

| Article designation | Vehicle | Part number |
|------------------------------|----------|----------------------|
| Folding table (code FF3) | Ac3, Ac2 | A 943 810 01 66 |
| Screw (folding table) | Ac3, Ac2 | N000000 002439 |
| Folding table bracket, left | Ac3, Ac2 | A 943 816 00 14 7D53 |
| Cover for bracket, left | Ac3, Ac2 | A 943 816 00 83 7D53 |
| Folding table bracket, right | Ac3, Ac2 | A 943 816 01 14 7D53 |
| Cover for bracket, right | Ac3, Ac2 | A 943 816 01 83 7D53 |

Swiveling table



B6 626 0331

Practical and space-saving: The height-adjustable swiveling table is perfect to eat from, to work on with the laptop or to use as a practical storage space.

| | |
|-------------------------|--|
| Product benefits | Space-saving, swivel-mounted, vertically adjustable, adapted to the geometry of center console |
| Material | Table top lined with imitation leather |
| Load | Max. 2.5 kg |
| Installation | Mounted in beverage holder and on the center console |

| Article designation | Vehicle | Part number |
|---------------------|---------|-------------|
| Swiveling table | Ac4 | B6 626 0331 |

Interior

Roof fixed air conditioner



B6 732 0054

A cool head on hot days: the roof stationary air conditioning system has a cooling output of up to 850 W. The best interior climate is ensured through additional dehumidification of the air.

| | |
|------------------------|---|
| Product benefits | Weight advantage compared with an ex works air conditioning system; low body height, consistent, pleasant and draft-free climate control increases driver comfort when sleeping in the cab, optional pre-conditioning of the cab increases driver well-being, entrance for unauthorized persons is impeded and soiling of the interior is reduced, as windows and roof hatches can remain closed even at high outside temperatures. |
| Installation | the roof-mounted stationary air conditioning system is installed instead of the roof hatch |
| Package contents | incl. remote control |
| Cab | BigSpace; StreamSpace |
| Weight | 21 kg |
| Additional information | Upper shell is paintable |
| Note | Please note total vehicle height |

| Article designation | Vehicle | Part number |
|---|--------------|-------------|
| Roof-mounted stationary air conditioning system | Ac4, Ac3, AR | B6 732 0054 |
| Roof stationary air conditioning installation kit | Ac4, Ar | B6 732 0055 |
| Template for roof stationary air conditioning for StreamSpace cab | Ac4, Ar | B6 732 0056 |
| Roof stationary air conditioning installation kit | Ac3 | B6 732 0057 |

The electrics/electronics.



Electrifying advantages.

In the area of electrical and electronic components our genuine accessories also stand for tested quality. Thanks to the state-of-the-art technology and excellent connections, you are safely underway.



Adapter cable and adapter



B6 753 0151



B6 753 0152

A 000 545 39 84

Adapter cable and adapter for power supply between semitrailer tractor and trailer or semitrailer.

| | |
|----------------------|--|
| Adapter cable | 15-pin plug (connector) according to ISO 12098 (24 V), 7-pin socket according to ISO 1185 (24 V, normal, black) and ISO 3731 (24 V, addition, white) |
| Usage | From socket (ISO 12098) on tractor to a separate connector (ISO 1185 and ISO 3731) on trailer/semitrailer |

| Article designation | Vehicle | Part number |
|---|---|-----------------|
| Adapter cable, 24 V, 15-pin to 2 x 7-pin | Ac4, Ac3, Ac2, Ac1, AN, AR, At4, At3, At2, At1, Ax3, Ax2, Ax1 | B6 753 0151 |
| Short adapter, 24 V, 15-pin to 2 x 7-pin, without cable | Ac4, Ac3, Ac2, Ac1, AN, AR, At4, At3, At2, At1, Ax3, Ax2, Ax1 | B6 753 0152 |
| Adapter, 24 V, 15-pin to 2 x 7-pin, with spiral line (code E6E) | Ac4, Ac3, Ac2, Ac1, AN, AR, At4, At3, At2, At1, Ax3, Ax2, Ax1 | A 000 545 39 84 |

Trailer socket, 24 V



A 000 540 27 39

A 000 540 38 39

For a secure power supply between the tractor and trailer or semitrailer. The socket supplies, for example, the illumination, rear headlamps or brake lamps with power.

| | |
|-----------------------|---|
| Technical data | 24 V; assignment 5 x 1.5 mm ² and 2 x 4 mm ² ; 15-pin ABS/EBS (ISO 7638); 450 cm length |
|-----------------------|---|

| Article designation | Vehicle | Part number |
|------------------------------|---|-----------------|
| Trailer socket, 24 V, 15-pin | Ac4, Ac3, Ac2, Ac1, AN, AR, At4, At3, At2, At1, Ax3, Ax2, Ax1 | A 000 540 27 39 |
| Trailer socket, 24 V, 7-pin | Ac4, Ac3, Ac2, Ac1, AN, AR, At4, At3, At2, At1, Ax3, Ax2, Ax1 | A 000 540 38 39 |

Audio/video adapter set



B6 753 0173



B6 753 0174

Perfect connection for optimal entertainment: The video adapter set comprises an extension cord for externally connecting video units such as a DVD player to the radio. Also suited for connecting the reversing camera.

| Audio adapter set | |
|-------------------|--|
| Product benefits | Adapters were specially developed for Mercedes-Benz radios |
| Description | Line-in-adapter and mute-adapter/ISO-connector and cinch couplings; for the audio output of external devices via onboard loudspeakers, as well as mute function for muting, suitable for TV, navigation (announcement), external hands-free system etc. (in combination with code J2A-J2E) |

| Article designation | Vehicle | Part number |
|---------------------|-------------|-------------|
| Audio adapter set | Ac4, An, Ar | B6 753 0173 |

| Video adapter set | |
|-------------------|--|
| Product benefits | Adapters were specially developed for Mercedes-Benz radios |
| Description | FAKRA coax socket housing, code F (brown) and code E (green), cinch coupling, black and yellow/video in and out; for connecting external video units, suitable for Playstation, Wii, video camera, TV, etc. (in combination with code J2D) |

| Article designation | Vehicle | Part number |
|---------------------|-------------|-------------|
| Video adapter set | Ac4, An, Ar | B6 753 0174 |

HF adapter, GSM/GPS



B6 782 1133

Perfect connection for new antennas: HF adapter for connection of antennas with FAKRA connection to FME connection in electrical compartment (code EV5).

Note FAKRA coding, i.e., can also be used for other devices (e.g. trunk radio, GPS, fax, telephone)

| Article designation | Vehicle | Part number |
|-------------------------------|-------------------------|-------------|
| HF adapter GSM for FleetBoard | Ac3, Ac2, Ac1, At1, Ax1 | B6 782 1132 |
| HF adapter GPS for FleetBoard | Ac3, Ac2, Ac1, At1, Ax1 | B6 782 1133 |
| HF adapter GSM | Ac3, At2, Ax2 | B6 782 1264 |

Power plug and power socket



B6 753 0126, B6 753 0129

Secure connection: Power connector and power socket for a secure power supply for electrical devices with high power consumption (e.g. coffee makers and electric kettles). Suitable for power consumption up to 25 amps.

| | |
|------------------|---|
| Product benefits | Secure fit of the connector; secure connection, both magnetic or mechanical; current only flows when mechanical connection is closed; 50% lower installation depth compared to a standard socket; short-circuit proof |
| Technical data | 2.5 mm² wiring in red and brown, line sheathing; "flying" 25 A fuse |
| Package contents | Cable set, fuse, socket, ring eyelet |
| Power socket | (MagCode) Power Port Pro 24 V (connection: 6.3 mm flat contact) |
| Power connector | (MagCode) Power Clip Pro 24 V (connection: threaded connection) |
| Note | Power socket in combination with code ED9 |

| Article designation | Vehicle | Part number |
|---------------------|----------------------------|-------------|
| Power socket | Ac3, Ac2 | B6 753 0126 |
| Power connector | Ac4, Ac3, Ac2, Ac1, AN, AR | B6 753 0129 |

Plug and socket, ABS/EBS



B6 753 0158



B6 753 0159

Plug and socket (ISO 7638) for standard line. ADR-/GGVS-compatible. Rear outlet of socket is straight.

| | |
|----------------|--|
| Technical data | with 9 crimp contact bushes (5 x 1.5 mm ² , 2 x 4 mm ² and 2 x 6 mm ²) |
| Note | Suitable for all systems (e.g. 5-pin with 2x 6.0 mm ² , 7-pin with 2x 4.0 mm ² , etc.) |

| Article designation | Vehicle | Part number |
|---------------------|---|-------------|
| ABS/EBS plug | Ac4, Ac3, Ac2, Ac1, AN, AR, At4, At3, At2, At1, Ax3, Ax2, Ax1 | B6 753 0158 |
| ABS/EBS socket | Ac4, Ac3, Ac2, Ac1, AN, AR, At4, At3, At2, At1, Ax3, Ax2, Ax1 | B6 753 0159 |

Plug and socket, 15-pin



B6 753 0163



B6 753 0164

Plug (ISO 12098) for standard tubing and socket (ISO 12098) for standard and corrugated tubing. ADR-/GGVS-compatible. Rear outlet of socket is straight.

| | |
|----------------|---|
| Technical data | Crimp connections (12 x 1.0 – 1.5 mm ² and 3 x 2.5 mm ²) |
|----------------|---|

| Article designation | Vehicle | Part number |
|-----------------------------|---|-------------|
| Connector, 15-pin, 24 V ADR | Ac4, Ac3, Ac2, Ac1, An, Ar, At4, At3, At2, At1, Ax3, Ax2, Ax1 | B6 753 0163 |
| Socket, 15-pin, 24 V ADR | Ac4, Ac3, Ac2, Ac1, An, Ar, At4, At3, At2, At1, Ax3, Ax2, Ax1 | B6 753 0164 |

Jumper cable, 24 V



B6 753 0150

For a safe start-up: Jumper cable with integrated protective circuit for suppressing inductive voltage peaks and with four fully insulated angled clamps in a practical bag.

| | |
|------------------|--|
| Product benefits | Sturdy vulcanized ribbon conductors with rip-out protection, reduced arcing, corresponds to DIN 72 553, plugs and connectors watertight and vulcanized |
|------------------|--|

| | |
|----------------|---|
| Technical data | 24 V, up to 1000 A, 50 mm² wire cross-section, 5 m length |
|----------------|---|

| Article designation | Vehicle | Part number |
|---------------------|---|-------------|
| Jumper cable, 24 V | Ac4, Ac3, Ac2, Ac1, AN, AR, At4, At3, At2, At1, Ax3, Ax2, Ax1 | B6 753 0150 |

USB extension cord



B6 753 0172

Music like clockwork: Extension cord for connecting external USB devices such as an MP3 player or memory stick to the radio of the Actros, Antos and Arocs (in combination with code J2A - J2E).

| | |
|------------------|--|
| Product benefits | Specially developed for Mercedes-Benz radios |
|------------------|--|

| | |
|----------------|--------------------------------|
| Technical data | USB A-jack, mini-USB connector |
|----------------|--------------------------------|

| | |
|--------|-------|
| Length | 65 cm |
|--------|-------|

| Article designation | Vehicle | Part number |
|---------------------|-------------|-------------|
| USB extension cord | Ac4, An, Ar | B6 753 0172 |

Antennas

Always good reception with antennas and antenna accessories for your truck. Your Mercedes-Benz partner is happy to advise you.



B6 682 8535



B6 782 1321

| Article designation | Vehicle | Part number |
|--|-------------------------|-----------------|
| Kombiantenne Radio/D-Netz | Ac3, Ac2, Ac1 | B6 682 8534 |
| CB radio antenna, for high roof | Ac3, Ac2, Ac1 | B6 682 8527 |
| CB-Funkantenne, für niedriges Dach | Ac3, Ac2, Ac1 | B6 682 8535 |
| Trunked radio system antenna rod | Ac3, Ac2, Ac1, At1, Ax1 | B6 682 8569 |
| Dual-band rod GSM 900 MHz network/GSM-1800 network | Ac3, Ac2, Ac1, At1, Ax1 | B6 682 8572 |
| Shortened AM/FM antenna rod, 234 mm, for car transporter | Ac4 | B6 782 1321 |
| AM/FM antenna rod, 400 mm | Ac4, Ac3, Ac2 | B6 682 8573 |
| AM/FM antenna rod, 500 mm | Ac3, Ac2, Ac1 | B6 682 8574 |
| CB radio antenna rod, 400 mm | Ac3, Ac2, Ac1 | B6 683 0026 |
| CB radio antenna rod, 500 mm | Ac3, Ac2, Ac1 | B6 683 0027 |
| Shortened AM/FM antenna rod, 234 mm, for Thermoking body | At4 | B6 782 1320 |
| Antenna assembly, radio, 60° phone, line length 2,050 mm | At3, At2, Ax3, Ax2 | A 003 820 23 75 |

Antennas



A 906 905 48 00

Always good reception with antennas and antenna accessories for your truck. Your Mercedes-Benz partner is happy to advise you.

| Article designation | Vehicle | Part number |
|---|--|-----------------|
| AM/FM 20° antenna base | Ac4, An, Ar | A 002 827 03 01 |
| AM/FM/FZV433MHz/telephone 20° antenna base | Ac4, An, Ar | A 002 827 05 01 |
| CB radio antenna base, 6° | Ac4, An, Ar | A 002 827 07 01 |
| CB radio antenna base, 20° | Ac4, An, Ar | A 002 827 08 01 |
| Antenna rod, 280 mm, radio /telephone, 20° | Ac4, An, Ar | A 002 827 06 01 |
| Antenna rod, 435 mm, CB radio, 6° /20° | Ac4, An, Ar | A 002 827 09 01 |
| Antenna assembly, radio 10° telephone, line length 900 mm | Ac3 | A 003 820 20 75 |
| Antenna assembly, radio 60° telephone, line length 1150 mm | Ac3, At3, At2, At1, Ax3, Ax2, Ax1 | A 003 820 22 75 |
| GSM/GPS FleetBoard/navigation antenna, line length 1450 mm | Ac3, At3, At2, At1, Ax3, Ax2, Ax1 | A 001 827 94 01 |
| GSM/GPS FleetBoard/navigation antenna, line length 1450 mm | Ac4 | A 906 905 48 00 |
| Antenna assembly, CB radio, 10°, 450 mm, line length 3500 mm | Ac3, At3, At2, At1, Ax3, Ax2, Ax1 | A 003 820 24 75 |
| Antenna assembly, CB radio, 60°, 450 mm, line length 3500 mm | Ac3, At3, At2, At1, Ax3, Ax2, Ax1 | A 003 820 25 75 |
| Radio antenna rod, 420 mm | Ac3 | A 002 827 88 01 |
| CB radio antenna rod, 450 mm | Ac3 | A 002 827 92 01 |

Bluetooth CD radio (code EU2)



A 004 820 54 86

Perfect infotainment: If required, other mobile devices such as MP3 players can also be connected. Bluetooth CD radio with integrated hands-free system via Bluetooth interface. The driver can thus keep his/her hands on the steering wheel.

| | |
|--------------------------|---|
| Product benefits | Functionality, reception and sound quality are completely guaranteed, clean processing, without damage to the interior equipment through retrofitting of the code EU2, easy operation of the CD radio |
| Technical data | Radio with 4 wavebands: MW, FM, LW, SW; CD player (Audio CD, MP3, WMA formats); CAN interface for display in instrument cluster; access to address book (with code EU2) via MFL - display in instrument cluster |
| Operating voltage | 24 V |

| Article designation | Vehicle | Part number |
|-------------------------------|--|-----------------|
| Bluetooth CD radio (code EU2) | Ac4, Ac3, Ac2, Ac1, Ax3, Ax2, Ax1, At3, At2, At1 | A 004 820 54 86 |

Spare bulb boxes

Small and large bright spots: contain all required reserve lamps and fuses in a stable box.

| | |
|------------------|--|
| Product benefits | Stored safe and compact in a handy box; put together in a way that is model series independent |
| Package contents | All required spare bulbs for the main headlamps, front fog lamps, turn signal lamps, interior illumination, etc. |
| Note | Important: Many European countries mandate that you have this equipment in your vehicle when traveling |



| Article designation | Vehicle | Part number |
|---------------------------|---|-------------|
| Spare bulb box, H7, small | Ac4, Ac3, Ac2, Ac1, AN, AR, At4, At3, At2, At1, Ax3, Ax2, Ax1 | B6 683 0022 |
| Spare bulb box, H7, large | Ac4, Ac3, Ac2, Ac1, AN, AR, At4, At3, At2, At1, Ax3, Ax2, Ax1 | B6 683 0021 |
| Spare bulb box, H4, small | Ac1 | B6 683 0023 |

B6 683 0022, B6 683 0021

| Content of spare bulb boxes | | | | |
|-----------------------------|---------------------------|---------------------------|-----------|---|
| Spare bulb box, H7, small | Spare bulb box, H4, small | Spare bulb box, H7, large | | Content of spare bulb boxes |
| - | - | 1x | H1 | High beams |
| 1x | - | 2x | H7 LHD | Low beams |
| - | 1x | - | H4 | Low beams |
| 2x | 2x | 3X | P21W | Rear: Turn signal lamps, tail lamps, brake lights |
| 1x | 1x | 3X | R10W | License plate number, side position, tail lights |
| 1x | 1x | 1x | PY21W | Front turn signal |
| - | 1x | 1x | C5W | Marking at left, right front on wind deflector |
| 1x | - | 2x | W5W | Entrance standing lights |
| 1x | 1x | 2x | Fuse 10A | |
| 1x | 1x | 2x | Fuse 15 A | |
| 1x | 1x | 1x | Fuse 20 A | |
| 1x | 1x | 1x | Fuse 25 A | |

Lighting

CB radio frequency antenna spacer



B6 782 1261



B6 782 1262

Keep your distance: Spacer for the CB radio antenna on car transporters.

| | |
|--------------|---------------------------------------|
| Color | Black |
| Installation | Simple assembly |
| Note | For Actros until 09/2008; B6 782 1261 |
| Note | For Actros since 10/2008; B6 782 1262 |

| Article designation | Vehicle | Part number |
|-----------------------------------|----------|-------------|
| CB radio frequency antenna spacer | Ac3, Ac2 | B6 782 1261 |
| CB radio frequency antenna spacer | Ac3 | B6 782 1262 |

Standard CB radio, 12 V



B6 682 8599

Standard CB radio with practical channel selector and bar display for partner signal strength.

| | |
|-------------------|--|
| Technical data | 40 FM channels, 4 W/ 40 AM channels, 1 W; squelch control for annoying noise |
| Operating voltage | 12 Volt |

| Article designation | Vehicle | Part number |
|--|---|-------------|
| CB-Funkgerät Standard, 12 Volt | Ac4, Ac3, Ac2, Ac1, AN, AR, At4, At3, At2, At1, Ax3, Ax2, Ax1 | B6 682 8599 |
| Spare microphone for standard CB radio | Ac4, Ac3, Ac2, Ac1, AN, AR, At4, At3, At2, At1, Ax3, Ax2, Ax1 | B6 683 0014 |

| CB radio accessories | | |
|-----------------------------|----------------------------|----------------------|
| Article designation | Vehicle | Part number |
| Installation frame | Ac4, An, Ar | B6 683 0013 |
| CB radio installation frame | Ac4, An, Ar | A 960 846 01 24 9051 |
| CB radio installation frame | Ac2, Ac3 | A 943 846 08 24 7D66 |
| Cover | Ac1, Ac2, Ac3, Ac4, An, Ar | B6 683 0012 |
| Microphone holder | Ac1, Ac2, Ac3, Ac4, An, Ar | A 943 828 02 14 |
| Additional speaker | Ac1 | B6 682 8589 |

CB radio, universal, 12V



B6 683 0017

At home on every channel: Universal CB radio with 3 switchable national frequency tables. With ASC (automatic smoke barrier) and microphone with up and down buttons for selecting the channel.

| | |
|----------------|--|
| Technical data | 3 switchable national frequency tables: 80 channels FM, 4 W/12 channels AM, 1 W/40 channels FM, 4 W/40 channels AM, 1 W/40 channels FM, 4 W/CEPT |
|----------------|--|

| | |
|-------------------|------|
| Operating voltage | 12 V |
|-------------------|------|

| Article designation | Vehicle | Part number |
|---|---|-------------|
| CB radio, universal, 12V | Ac4, Ac3, Ac2, Ac1, AN, AR, At4, At3, At2, At1, Ax3, Ax2, Ax1 | B6 683 0017 |
| Spare microphone for universal CB radio | Ac4, Ac3, Ac2, Ac1, AN, AR, At4, At3, At2, At1, Ax3, Ax2, Ax1 | B6 683 0016 |

Vehicle locating



B6 782 1245

A little box, but a lot of safety: Mercedes-Benz vehicle locating uses an integrated GPS receiver to send the exact location of the vehicle over the satellite. This means that in an emergency you can use the state-of-the-art technology to act quickly: If your vehicle is stolen, please contact your Alarm Center as soon as possible. The Alarm Center network is available in 36 European countries on a 24/7 basis. It sets up direct contact to the national police authorities, to enable your vehicle to be quickly traced and seized. With the SIM card reader with a monthly contract, the driver benefits from pan-European roaming. The software for vehicle locating and Internet use is included in the scope of supply. The vehicle locating is installed so that it cannot be seen from outside or inside the vehicle. IP67 and IP56 protected.

Note The vehicle locating represents an entry-level product for locating your vehicle. For higher-quality applications, e.g. vehicle-specific evaluations, products from Fleetboard are ideally suited (www.fleetboard.com).

| Article designation | Vehicle | Part number |
|---------------------|---|-------------|
| Vehicle locating | Ac4, Ac3, Ac2, Ac1, AN, AR, At4, At3, At2, At1, Ax3, Ax2, Ax1 | B6 782 1245 |

Front camera system



B6 782 1260



Nothing is overlooked here: The front camera records the blind area in front of the cab thereby increasing safety when driving and maneuvering.

| | |
|------------------|--|
| Product benefits | View of blind spot in front of cab; cable and connector systems suitable for hazardous goods transportation; watertight camera housing (protection class IP 69K); integrated heater; easy cleaning of the lens; extendable system for combined use of front and reversing camera |
|------------------|--|

| | |
|----------|---|
| Function | Camera switched on and off automatically depending on the speed (at approx. 30 km /h) |
|----------|---|

| | |
|--------------|-------------------------------|
| Installation | With flexible mounting system |
|--------------|-------------------------------|

| | |
|------------------|-----------------------------------|
| Package contents | Incl. monitor, system box, wiring |
|------------------|-----------------------------------|

| | |
|------|---|
| Note | Fulfills legal requirements to replace front mirror |
|------|---|

| Article designation | Vehicle | Part number |
|---------------------|---------------|-------------|
| Front camera system | Ac3, Ac2, Ac1 | B6 782 1260 |

Reversing camera system



B6 782 1275, B6 782 1269



B6 782 1280



B6 782 1281

Everything always in view: The reversing camera system allows you to see the area directly behind the vehicle, thus increasing safety and preventing accidents.

| | |
|------------------|---|
| Product benefits | Improved accident protection; accurate approaching when reversing and maneuvering; cable and connector systems are hazardous goods transportation compatible; watertight camera housing (protection class IP 69K); integrated heater |
| Function | System is automatically activated when the reverse gear is engaged |
| Note | At present, the second person as a marshaling person is still prescribed; in combination with code J9) (pre-installation for reversing camera), the display is shown on the video-compatible instrument cluster, code J1C (12.7 cm color display) |

| Article designation | Vehicle | Part number |
|--|--|-------------|
| Reversing camera without overlay | Ac4, Ac3, Ac2, Ac1, AN, AR | B6 782 1275 |
| Reversing camera with overlay | Ac4, Ac3, Ac2, Ac1, AN, AR | B6 782 1269 |
| Adapter cable (in combination with code J9)) | Ac4, An, Ar | B6 753 0171 |
| Multicable 5 m | Ac4, Ac3, Ac2, Ac1, AN, AR | B6 782 1277 |
| Multicable 11 m | Ac4, Ac3, Ac2, Ac1, An, Ar, Ax4, Ax3, Ax2, Ax1, At4, At3, At2, At1 | B6 782 1278 |
| Multicable 16 m | Ac4, Ac3, Ac2, Ac1, AN, AR | B6 782 1279 |
| Multicable 21 m | Ac4, Ac3, Ac2, Ac1, AN, AR | B6 782 1280 |
| Helix cable | Ac4, Ac3, Ac2, Ac1, AN, AR | B6 782 1281 |

Additional monitor for SurroundView



B6 782 1267



For the all-round view: This 7 "TFT monitor with high-quality LED backlight and excellent image quality has been specifically developed for use in the commercial vehicle and offers the advantages of an impeccable SurroundView display.

| | |
|------------------|--|
| Product benefits | Can display up to four cameras in a monitor image which are mounted to any position on the vehicle so that the driver can see everything when driving and maneuvering in tight driving situations |
| Function | Consistently fulfills the high requirements in commercial vehicles such as dust-proofness, water resistance IP6K5, temperature range - 30 °C to + 85 °C: Integrated control unit for automatic trailer recognition, a brightness sensor for automatic day/night switchover as well as an adjustable overlay for the distance visualization; connection to up to four cameras is possible. The setting is very easy when using the buttons on the monitor |
| Package contents | 1 modular SV monitor, multipoint connector connection, sturdy and flexible adjustable monitor holder |

| Article designation | Vehicle | Part number |
|---|----------------------|-------------|
| 7" additional monitor for surround view | For all model series | B6 782 1267 |

Mobile phone charging cradle for iPhone



B6 782 1306

Conveniently operate your mobile phone from the multifunction steering wheel: The charging cradle enables a connection to be made with the external antenna of your vehicle. The battery is also recharged. The fixed support guarantees that the iPhone 3G, 3GS, 4 or 4S is safely held in place even during the drive. For newer iPhone models please use the universal mobile phone charging cradle B6 782 1305.

| Article designation | Vehicle | Part number |
|--|-------------|-------------|
| Mobile phone charging cradle (for the iPhone 3G, 3GS, 4, 4S) | Ac4, An, Ar | B6 782 1306 |

Mobile phone cradle retrofitting



B6 782 1291

For good business connections: Retrofit for mobile phone cradles. Radiation in the cab is reduced to a minimum and reception is improved thanks to the permanent connection to the external antenna. The battery is also recharged.

| | |
|-------------------------|--|
| Package contents | Cable set, base plate, FME-FAKRA adapter |
| Note | Only in combination with code EU2 and code EV5 |

| Article designation | Vehicle | Part number |
|---|---------------|-------------|
| Mobile phone cradle retrofit (code EU3) | Ac3, Ac2, Ac1 | B6 782 1291 |

Universal mobile phone cradle



B6 782 1303

Puts an end to searching for a fitting cradle for every individual cell phone: The charging cradle for many Bluetooth-compatible mobile phones, manufacturer-independent. With inductive external antenna and USB charge point. Connection to on-board voltage.

| Article designation | Vehicle | Part number |
|-------------------------------|----------|-------------|
| Universal mobile phone cradle | Ac3, Ac2 | B6 782 1303 |
| Extension cord | Ac3, Ac2 | B6 782 1304 |

Universal mobile phone charging cradle



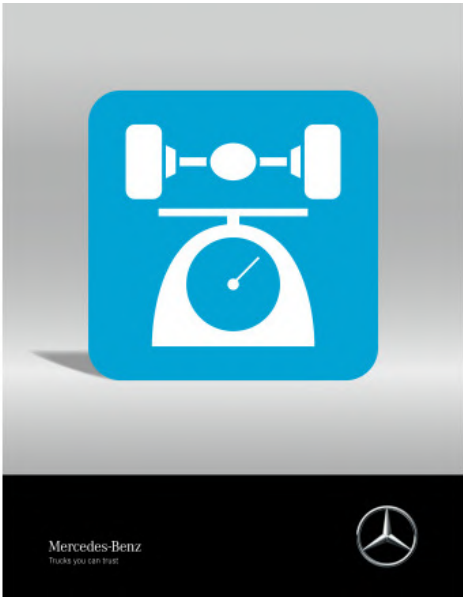
B6 782 1305

Optimal reception: You can use the charging cradle to connect your mobile phone to the external antenna of your vehicle while also conveniently recharging the battery. The cradle provides for secure stowage on the go.

| | |
|------------------|---|
| Package contents | 4 connecting cables for supplying power to Nokia telephones and for telephones with a micro-USB output. Cradle for common mobile phones |
|------------------|---|

| Article designation | Vehicle | Part number |
|--|--|-------------|
| Universal mobile phone charging cradle (in combination with code J2C or J2D) | Ac4, Ac3, Ac2, AN, AR, At4, At3, At2, At1, Ax3, Ax2, Ax1 | B6 782 1305 |

Axle load measuring device (code J3Z)



A 000 827 83 59

The axle load measuring device electronically records the current individual axle loads of all air-sprung axles. Sensors in the air suspension supports determine the respective load values as soon as the air suspension is brought in the drive position.

| | |
|-------------------------|--|
| Product benefits | Easy operation and safety for the driver in the case of weight-critical vehicle load through reading of actual axle loads via the Driver Information System; increased road safety by avoiding overload of vehicle; contributes to value preservation of the vehicle by preventing overload and related damage |
|-------------------------|--|

| | |
|-------------------------------|--|
| Additional information | This retrofitting set is applicable only in combination with Roll Control Assist (code S1F) and air-sprung front axle (code A1A). Retrofitting the axle load measuring device (code J3Z) is also possible for other vehicle configurations. Please contact your Mercedes-Benz Partner, who will be happy to advise you |
|-------------------------------|--|

| | |
|-------------|--------------------------------|
| Note | The system is not calibratable |
|-------------|--------------------------------|

| Article designation | Vehicle | Part number |
|--|-------------|-----------------|
| Retrofitting the axle load measuring device (code J3Z) | Ac4, An, Ar | A 000 827 83 59 |
| Parts kit pressure sensor | Ac4, An, Ar | A 012 542 09 18 |

Predictive Powertrain Control - PPC (code G0T)



A 000 446 31 75

Lower the consumption level for your truck with the PPC retrofit (PPC: Predictive Powertrain Control) by up to 7 %: The innovative system links GPS data and topographical maps with Mercedes PowerShift 3. The cruise control predictively matches the gear selection and speed fully automatically to your individual route conditions.

Product benefits

Fuel savings of up to 7% with unchanged average speed; optimized shifting comfort thanks to automated adaptation to the topography by: predictive rolling in neutral (EcoRoll) in light downhill gradients, early switching into a suitable gear before a downhill gradient and early upshifting before hill tops, avoiding any unnecessary downshifting in uphill gradients or of shifting on steep, short uphill gradients. Usable on 95 % of European freeways and federal

| Property | The new PPC retrofit package (PPC: Predictive Powertrain Control) is even more beneficial thanks to improved software and expanded map data | |
|-------------------------------|---|-----------------|
| Additional information | Obligations: from production date 08.2012, Mercedes PowerShift 3 (code G5G); exclusions: Hydraulic Auxiliary Drive (code A1H), secondary water retarder (code B3H), drivetrain 44 t to 80 t (code G0B), drivetrain, 44 t to 120 t (code G0C), drivetrain, customer demand greater than 120 t (code G0D), municipal drive program (code G0S), fire-service drive program (code G0X), transmission G 280-16/11.7-0.69 (code G2D), turbo retarder coupling (code G3Y), all-wheel drive | |
| Article designation | Vehicle | Part number |
| PPC retrofit package | Ac4, An, Ar | A 000 446 31 75 |

PPC update
Product benefits

Fuel saving through unchanged average speed from up to 7 %; optimized shifting comfort thanks to automated adaptation to the topography through: Predictive rolls in neutral (EcoRoll) in light downhill gradients. Shift in advance into suitable gear before a downhill gradient. Upshift in advance before hill tops. Avoidance of any unnecessary downshifting in uphill gradients or of shifting on steep, short uphill gradients. Usable on 95 % of European freeways and federal highways. Shift in advance into suitable gear before a downhill gradient

Prerequisite

Old generation PPC (B6 683 0049). Part number control unit A000 446 0375 or A000 446 0475 or A000 446 0575

| Article designation | Vehicle | Part number |
|---------------------|-------------|-----------------|
| PPC update | Ac4, An, Ar | A 000 827 35 03 |

Mercedes-Benz
Trucks you can trust.

High Performance Engine Brake (code M5V)



Increase the braking force of your engine brake and thus improve the wear-free braking. Up to 85 % of the braking work can be performed with the High Performance Engine Brake.

| | |
|-------------------------|--|
| Product benefits | Up to 37 % more brake force compared to the standard engine brake (in the OM473 the engine brake force increases up to 130 kW) |
| Note | The standard engine brake (code M5U) is a requirement for the "High Performance Engine Brake" retrofitting |

| Article designation | Vehicle | Part number |
|---|-------------|-----------------|
| Data medium for retrofitting High Performance Engine Brake (code M5V) model 963/964 | Ac4, An, Ar | A 000 827 76 59 |
| Data medium for retrofitting High Performance Engine Brake (code M5V) model designation 967 | At4 | A 000 827 77 59 |

Drive program "offroad" (code G0W)

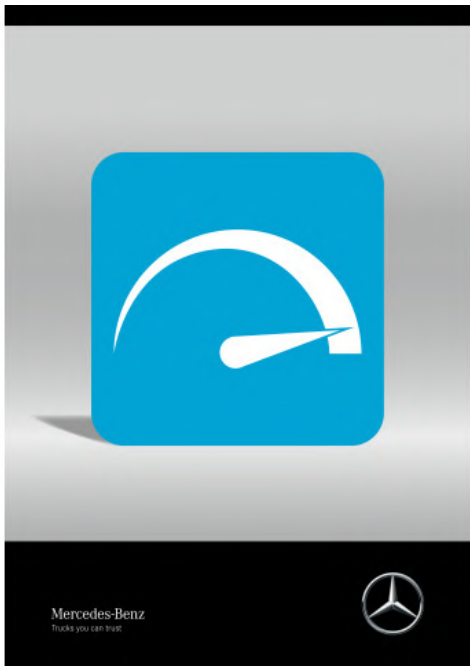


The "offroad" transmission mode is specially designed for off-road use and supports a very powerful driving style.

| | |
|-----------------|---|
| Property | Crawl function for sensitive maneuvering, rpm increase by 100 rev./min. in order to avoid shift operations and thus interruption of tractive power, the suppression of upshift when driving at inclines, rocking mode as well as fast reversing with four reverse gears |
| Validity | The drive program has been optimized for use with a total vehicle weight of up to 120 t |
| Note | Requirement code G5G (Mercedes PowerShift 3) |

| Article designation | Vehicle | Part number |
|---|---------|-----------------|
| Data medium for Retrofitting drive program "offroad" (code G0W) | Ar | A 000 827 67 59 |

Drive program "power" (code G0V)



The "power" transmission mode is designed for on-road use in long-distance haulage and supports a very nimble driving style.

| | |
|----------|---|
| Property | Es werden die Drehzahlen gegenüber dem Standard-Modus für alle Schaltvorgänge um 100 U/Min erhöht |
| Validity | The transmission mode is optimized for use with a gross vehicle weight of up to 150 t |
| Note | Voraussetzung Code G5G (Mercedes PowerShift 3) |

| Article designation | Vehicle | Part number |
|---|-------------|-----------------|
| Data medium for Retrofitting drive program "power" (code G0V) | Ac4, An, Ar | A 000 827 65 59 |

Retrofitting

Drive program "economy" (code G0U)



The "economy" transmission mode is designed for on-road use in long-distance haulage and supports a driving style that is extremely fuel-efficient and preserves the vehicle.

| | |
|----------|--|
| Property | When the cruise control is activated, the maximum speed is limited to 85 km/h, the kickdown function is suppressed and EcoRoll mode is permanently enabled |
| Validity | The drive program has been optimised for use with a total vehicle weight of up to 44 t |

| Article designation | Vehicle | Part number |
|---|-------------|-----------------|
| Data storage medium retrofit Drive program "economy" (code G0U) | Ac4, An, Ar | A 000 827 64 59 |

Drive program "fleet" (code G0Z)

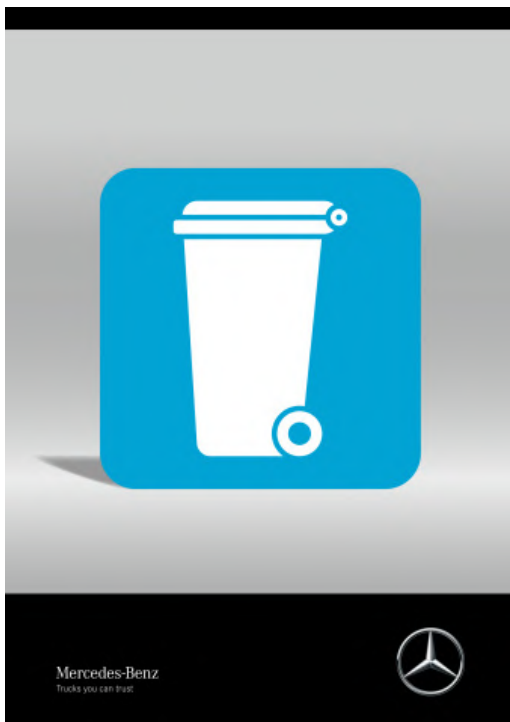


The "Fleet" drive program is a fuel-saving variant of Mercedes PowerShift, which has been developed for fleet customers in long-distance haulage. It is equipped exclusively with the Economy switch mode and is limited to a maximum speed of 85 km/h.

| | |
|-----------------|---|
| Property | The kick-down function and manual transmission mode are omitted. The button on the right-hand pitman arm for selecting the transmission mode is nonfunctional |
| Note | The amount of the fuel saved depends heavily on the purpose, topography and the driving style. requirement code G5G (Mercedes PowerShift 3) |

| Article designation | Vehicle | Part number |
|----------------------------------|-------------|-----------------|
| Drive program "fleet" (code G0Z) | Ac4, An, Ar | A 000 827 66 59 |

Drive program "municipal" (code G0S)



The "municipal" drive program has been adapted to the requirements of the waste disposal branch.

| | |
|-----------------|--|
| Property | In the "Municipal" drive program for waste disposal vehicles, standard and special automation driving modes are available; "Municipal" driving mode comprises the following adaptations: Parameterized start-off gear for collection defined: Ex works second gear, EcoRoll, creeping and clutch overload warning is deactivated |
| Note | Requirement code G5G (Mercedes PowerShift 3) |

| Article designation | Vehicle | Part number |
|--------------------------------------|-------------|-----------------|
| Drive program "municipal" (code G0S) | Ac4, An, Ar | A 000 827 68 59 |

Drive program "fire-service" (code G0X)



The “fire service” drive program has been designed for use by the fire department and supports the acceleration and dynamics of the vehicle.

| | |
|-----------------|--|
| Property | The switching point selection, the gearshift dynamics are shifted in such a way that the maximum dynamic thrust force is achieved in every driving situation . Thus , specifications for fire-fighting vehicles are thus fulfilled as per DIN 1846-2 |
| Validity | The drive program has been optimised for use with a total vehicle weight of up to 44 t |
| Note | Special functions which are not required for airfield fire engines are not contained |

| Article designation | Vehicle | Part number |
|--|-------------|-----------------|
| Data medium for Retrofitting drive program "fire-service" (code G0X) | Ac4, An, Ar | A 000 827 70 59 |

Drive program “heavy” (code G0Y)



The “heavy” drive program is a functional supplement to the standard transmission mode, and supports a very forceful driving style at the push of the button.

| | |
|-----------------|---|
| Property | Compared to the standard mode, the engine speed for all shift operations is increased by 100 rev./min. |
| Validity | The “Heavy” drive program is available exclusively for heavy-duty trucks |
| Note | Known scopes such as manual mode and rocking mode etc. are retained. This transmission mode is optimized for use with a gross vehicle weight of up to 250 t |

| Article designation | Vehicle | Part number |
|---|---------|-----------------|
| Data storage medium for retrofitting the “heavy” drive program (code G0Y) | AR | A 000 827 74 59 |



Mercedes-Benz WebParts

The online ordering system Mercedes-Benz WebParts offers you* the option to order Mercedes-Benz Genuine Parts easily and conveniently around the clock, 365 days a year, directly from your Mercedes-Benz partner.



Your advantages at a glance:

- Clearly arranged, easy-to-operate user interface
- Vehicle-specific parts research in Mercedes-Benz parts catalog (EPC)
- Access to the full range of Mercedes-Benz Genuine Parts, Remanufactured Parts and Genuine Accessories
- Display of your own individual conditions as well as parts availability in your inquiry result
- Take advantage of the attractive sales campaigns of your Mercedes-Benz partner
- Orders for fleet owners can be processed through the SAP interface

*Currently only available for corporate customers

Remote online (code J6Y)



Connect the vehicle with your smartphone. This allows you to conveniently open vehicle-relevant information about the vehicle and control functions through the app.

| | |
|-----------------|---|
| Property | Control: the radio, the sliding roof, interior lights, stationary air conditioner/heater and other functions. Receive information on: operating hours of the engine, tank level, AdBlue fill level, temperature, tire pressures as well as on the closure status of the doors |
|-----------------|---|

| | |
|-----------------|---|
| Function | The range of usage of the functions amounts to a maximum of 30 m around the vehicle |
|-----------------|---|

| | |
|-------------|---|
| Note | For retrofitting, the vehicle has to be fitted with Truck Data Center (code J3S /J3T) |
|-------------|---|

| Article designation | Vehicle | Part number |
|--------------------------|-------------|-----------------|
| Remote Online (Code J6Y) | Ac4, An, Ar | A 000 827 78 59 |

Vehicle-specific parameter data



We will look after your wishes: with a newly developed procedure, we can offer almost all modifications and retrofitting measures where vehicle-specific parameter data are concerned.

| | |
|-------------|---|
| Note | In order to be able to propose a vehicle-specific offer, please contact your Mercedes-Benz partner; who will be happy to advise you |
|-------------|---|

| Article designation | Vehicle | Part number |
|------------------------|------------------------|-----------------|
| Retrofitting parameter | Ac4, An, Ar, At4, Econ | A 000 827 75 59 |

FMS interface fleet management system (code E4B)

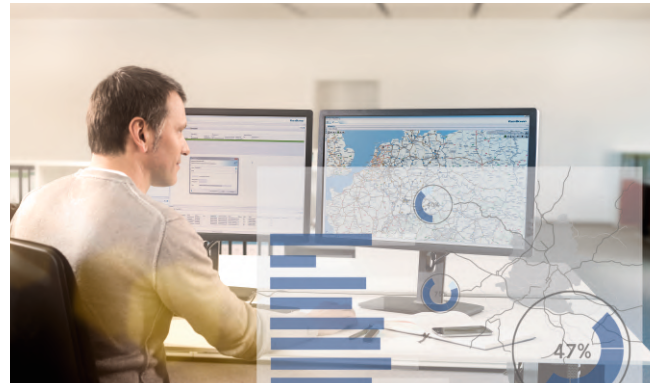


The standardized interface is an electronic communication connection for the fleet management systems from different manufacturers. It converts the on-board CAN data into the standardized SAE J1939 format and forwards it to the respective system. The data content of the interface is precisely defined and coordinated between the manufacturers. As a result, different fleet management systems can use vehicle data determined from the above-named manufacturers without a problem and irrespective of the brand.

| | |
|------------------|---|
| Property | Depending on the vehicle version, the following data can be called up as maximum: Cruise control, clutch, power take-off status, accelerator pedal position, total fuel consumption, current fuel consumption, fuel tank fill level, engine speed, axle load for individual axles, gross vehicle weight, total engine operating hours, vehicle identification number, software identification number, total kilometer reading, next regular maintenance service, tachograph information, vehicle speed (tachograph), engine coolant temperature, FMS standard information, engine percent load to maximum torque at current vehicle speed |
| Package contents | 3 x A 013 545 76 26 MCP contact socket for the power supply of the FMS device from the SCA/SSAM, 2 x A 013 545 44 26 MQS contact socket for the CAN pick-up at the CGW control unit, 1 x CD for software adaptation |

| Article designation | Vehicle | Part number |
|---|------------------------|-----------------|
| Retrofitting of interface, FleetManagementSystem FMS (code E4B) | Ac4, An, Ar, At4, Econ | A 000 827 73 59 |

FleetBoard



With the telematics-supported Internet services from FleetBoard, fleet operators can manage their commercial vehicles more efficiently. The modular services help companies to save fuel and manage their logistics processes. This enables you to create the perfect conditions to be even more profitable when on the road. Simply choose the ones that best match your vehicle fleet from the various services available.

| | |
|-------------------------|---|
| Product benefits | Available in more than 50 countries; telematics services for customer, driver and load; worldwide simple access to the data via the Internet or FleetBoard app; universal distribution and service network from Mercedes-Benz |
|-------------------------|---|

FleetBoard replacement parts

| Article designation | Vehicle | Part number |
|---------------------------|---|-----------------|
| DispoPilot 1+2 cradle | Ac4, Ac3, Ac2, Ac1, AN, AR, At4, At3, At2, At1, Ax3, Ax2, Ax1 | B6 782 1187 |
| DispoPilot 1+2 battery | Ac4, Ac3, Ac2, Ac1, AN, AR, At4, At3, At2, At1, Ax3, Ax2, Ax1 | B6 782 1188 |
| YM4/YN3 cable set (TP1-2) | Ac4, Ac3, Ac2, Ac1, AN, AR, At4, At3, At2, At1, Ax3, Ax2, Ax1 | B6 782 1191 |
| FleetBoard driver card | Ac4, Ac3, Ac2, Ac1, AN, AR, At4, At3, At2, At1, Ax3, Ax2, Ax1 | B6 782 1219 |
| WS control unit | Ac1, At3, At2, At1, Ax3, Ax2, Ax1 | A 000 446 11 24 |

| Article designation | Vehicle | Part number |
|--|---|-----------------|
| PSM 3 for trucks (parameterizable special module) | Ac3, Ac2, At3, At2, At1, Ax3, Ax2, Ax1 | A 000 446 18 46 |
| TiiRec.pro Code J3D | Ac4, AN, AR, At4 | A 000 446 23 60 |
| TiiRec.pro | Ac3, Ac2, At3, At2, At1, Ax3, Ax2, Ax1 | A 000 446 30 60 |
| Cable set Code EX3 (FleetBoard pre-installation) | Ac3, Ac2, At3, At2, At1, Ax3, Ax2, Ax1 | A 000 540 01 33 |
| PND adapter for DispoPilot.guide | Ac4, Ac3, Ac2, Ac1, AN, AR, At4, At3, At2, At1, Ax3, Ax2, Ax1 | A 000 827 11 52 |
| Navigation update (Europe) for DispoPilot.mobile 3 | Ac4, Ac3, Ac2, Ac1, AN, AR, At4, At3, At2, At1, Ax3, Ax2, Ax1 | A 000 827 13 03 |
| DispoPilot.guide retaining plate | Ac4, Ac3, Ac2, Ac1, AN, AR, At4, At3, At2, At1, Ax3, Ax2, Ax1 | A 000 827 14 11 |
| DispoPilot.mobile GSM replacement unit | Ac4, Ac3, Ac2, Ac1, AN, AR, At4, At3, At2, At1, Ax3, Ax2, Ax1 | A 000 827 17 57 |
| DispoPilot.guide - PND display | Ac4, Ac3, Ac2, Ac1, AN, AR, At4, At3, At2, At1, Ax3, Ax2, Ax1 | A 000 827 21 57 |
| DispoPilot.guide bracket with adapter | Ac4, Ac3, Ac2, Ac1, AN, AR, At4, At3, At2, At1, Ax3, Ax2, Ax1 | A 000 827 76 14 |

Truck navigation DVD



B6 683 0052

Getting you there reliably: With the map for truck navigation on DVD. In combination with code J2D.

| Article designation | Vehicle | Part number |
|--------------------------------|-------------|-------------|
| Truck Navigation DVD 2017/2018 | Ac4, An, Ar | B6 683 0052 |

Voltage reduction adapter



B6 753 0167

Versatile: voltage reduction adapter for operation 12 V trailers from a 24 V on-board electrical system, can be used as a short adapter.

| | |
|-------------------------|--|
| Product benefits | Automatic reset in case of overcurrent / overtemperature; compatible with lamp control devices; correct function of the ABS info module is ensured |
| Usage | From 15-pin 24 V to 13-pin 12 V |
| Note | Only for bulbs |

| Article designation | Vehicle | Part number |
|---------------------------|---|-------------|
| Voltage reduction adapter | Ac4, Ac3, Ac2, Ac1, AN, AR, At4, At3, At2, At1, Ax3, Ax2, Ax1 | B6 753 0167 |

Power inverter



B6 753 0130

Converts 24 Volt direct current into 230 Volt alternating current, overload and short circuit safe. Easily connect a number of electrical consumers from a laptop to a shaver to your on-board electrical system with the power inverter. Up to 350 Watt output.

| | |
|-------------|--|
| Note | Only in combination with code ED9 (Preinstallation for electrical equipment) |
|-------------|--|

| Article designation | Vehicle | Part number |
|-----------------------------------|----------|-------------|
| Power inverter for S, M and L cab | Ac3, Ac2 | B6 753 0131 |
| Power inverter for Megaspaces cab | Ac3, Ac2 | B6 753 0130 |

Tachograph disks/bulk package of tachograph disks



A 000 542 75 94



B6 782 1246

Tachograph disks for analog tachographs.

Package contents Tachograph disks in individual packaging in a box of 100 pieces or as a bulk package with 10 boxes with 100 pieces each

| Article designation | Vehicle | Part number |
|--|---------------|-----------------|
| Individual package of tachograph disks (box with 100 pieces) | Ac3, Ac2, Ac1 | A 000 542 75 94 |
| Bulk package of tachograph disks (10 boxes of 100 pieces each) | Ac3, Ac2, Ac1 | B6 782 1246 |

Thermal paper/bulk package of thermal paper



B6 782 1244



B6 782 1243

Printouts on heat-resistant thermal paper remain legible, even after coming into contact with water or engine oil.

Package contents Packages with 3 rolls each of 8 m or as bulk package with 20 packages with 3 rolls each

| Article designation | Vehicle | Part number |
|---|---|-------------|
| Single package of thermal paper (3 rolls of 8 m each) | Ac4, Ac3, Ac2, An, Ar, At4, At3, At2, Ax3, Ax2, Econ, Eco | B6 782 1244 |
| Bulk package of thermal paper (20 packages with 3 rolls each) | Ac4, Ac3, Ac2, An, Ar, At4, At3, At2, Ax3, Ax2, Econ, Eco | B6 782 1243 |

Notes

[illegible]



Mercedes-Benz ServiceContracts

Your success is our drive - Tailored modular and international service agreements.



Advantages at a glance:

- Selection from 7 modularly structured Mercedes-Benz ServiceContracts: from MB Uptime to warranty extensions and maintenance contracts and up to complete service
- Predictable monthly installments as well as increased availability of vehicles thanks to shorter non-operational times
- Concentration on your core business thanks to administrative relief
- Convenient settlement in a pan-European service network with approximately 2,700 workshops

| | |
|--|----------|
| A | |
| Adapter cable and adapter | 105 |
| Additional ashtray | 69 |
| Additional monitor for SurroundView | 120 |
| Air horns | 24 |
| Ambient lighting | 59 |
| Antennas | 111, 112 |
| Audio / video adapter set | 106 |
| Automatic tire chains | 42, 43 |
| Axle load measuring device (code J3Z) | 123 |
| B | |
| Back and neck supports | 99 |
| Bed, 900 mm | 61 |
| Bedding sets | 62, 63 |
| Bluetooth CD radio (code EU2) | 113 |
| C | |
| Care kit | 83 |
| CB radio frequency antenna spacer | 115 |
| CB radio, universal, 12V | 116 |
| CD boxes | 52 |
| Chrome applications, door | 13 |
| Chrome package / stainless steel panel | 14 |
| Chrome slats, front | 13 |
| Cockpit stowage tray | 53 |
| Cover for wheel arch and engine (code P0Q) | 34 |
| D | |
| Dash support trim | 66 |
| Decorative foils | 22, 23 |
| Digital clock | 81 |
| Drive program "economy" (code G0U) | 126 |
| Drive program "fire-service" (code G0X) | 128 |
| Drive program "fleet" (code G0Z) | 127 |
| Drive program "municipal" (code G0S) | 127 |
| Drive program "offroad" (code G0W) | 125 |
| Drive program "power" (code G0V) | 126 |
| Drive program "heavy" (code G0Y) | 128 |
| Durability test | 7 |
| E | |
| Electric kettle | 80 |
| Electromagnetic compatibility testing | 6 |
| Entrance emblem | 32 |
| Exhaust box shield | 35 |
| F | |
| FleetBoard | 132 |
| FMS interface fleet management system (code E4B) | 131 |
| Folding table | 101 |

| | |
|---|--------------------|
| Footrest cushion | 81 |
| Framing for Mercedes-Benz logo below windshield | 31 |
| Front camera system | 118 |
| Full wheel trim | 40 |
| H | |
| Handheld vacuum cleaner | 82 |
| HF adapter, GSM / GPS | 107 |
| High Performance Engine Brake (code M5V) | 125 |
| I | |
| Illuminated Mercedes star | 10, 11 |
| J | |
| Jumper cable, 24 V | 110 |
| K | |
| Key pouch | 55 |
| Key ring | 55 |
| L | |
| Laundry bag for stowage compartment over the windshield | 57 |
| LED daytime running lights | 12 |
| LED position lamps | 11 |
| LED reading lamp | 60 |
| Light alloy wheels | 39 |
| Lockable fuel filler cap (code K5M) | 45 |
| M | |
| Microwave 24 Volt | 80 |
| Mirror covers, chrome-plated (code D0C, FT2) | 33 |
| Mobile LED traffic hazard management light set | 46 |
| Mobile phone charging cradle for iPhone | 121 |
| Mobile phone cradle retrofitting | 121 |
| Molton overlays and fitted sheets | 65 |
| Mud flap | 41 |
| P | |
| Plug and socket, 15-pin | 109 |
| Plug and socket, ABS / EBS | 109 |
| Power inverter | 134 |
| Power plug and power socket | 108 |
| Predictive Powertrain Control - PPC (code G0T) | 124 |
| PremiumComfort mattress | 64 |
| Protective seat covers, accessory design | 89, 93, 94, 95, 96 |
| Protective seat covers, climate-controlled seats | 85 |
| Protective seat covers, imitation leather | 86 |
| Protective seat covers, series design | 87, 88, 90, 91, 92 |
| Protective seat covers, workshop | 97 |
| R | |
| Refrigerator, in the drawer / under bed (code Y1X) | 79 |
| Remote online (code J6Y) | 130 |
| Reversing camera system | 119 |

| | |
|---|------------|
| Ribbed floor mats | 74, 75 |
| Roller sunblinds | 71 |
| Roof fixed air conditioner | 102 |
| Roof lamp bracket | 15, 16 |
| Roof lamp bracket rotating beacon | 17 |
| Roof lamp bracket, additional headlamp | 18, 19, 20 |
| Rubber floor mats | 72, 73 |
| S | |
| Safety set | 46 |
| Seat base coverings | 100 |
| Side window wind deflector | 48, 49 |
| SoloStar folding box | 54 |
| Spare bulb boxes | 114 |
| Stainless steel front bar | 29 |
| Stainless steel grab handles | 28 |
| Stainless steel rear axle cover caps | 36 |
| Stainless steel slats, front | 30 |
| Stainless steel step covers | 27 |
| Stainless steel steps | 26, 27 |
| Stainless steel steps front | 28 |
| Stainless steel trim parts, louvers, side trim | 31 |
| Stainless steel trim strips, front end | 30 |
| Stainless steel wheel nut caps | 37 |
| Stainless steel wheel nut protective caps | 38 |
| Standard CB radio, 12 V | 115 |
| Standard lightweight construction caliper couplings, manually lubricated or low-maintenance | 44 |
| Steering wheels | 67 |
| Step plates behind cab | 25 |
| Stone chipping protective grille for headlamps | 47 |

| | |
|--|--------|
| Stone chipping protective window for headlamps | 47 |
| Stowage compartment bag for the drawer below the bed | 57 |
| Stowage compartment bag for the stowage compartment behind the driver's seat | 56 |
| Stowage compartment bag for the stowage compartment below the bunk | 56 |
| Stowage tray (retrofitting D7I) | 52 |
| Swiveling table | 101 |
| T | |
| Tachograph disks / bulk package of tachograph disks | 135 |
| Thermal paper / bulk package of thermal paper | 135 |
| TopFit set | 68 |
| Towel holder | 82 |
| Trailer socket, 24 V | 105 |
| Truck navigation DVD | 133 |
| U | |
| Universal mobile phone charging cradle | 122 |
| Universal mobile phone cradle | 122 |
| USB extension cord | 110 |
| V | |
| Valve extensions | 41 |
| Vehicle locating | 117 |
| Vehicle-specific parameter data | 130 |
| Velour floor mats | 76, 77 |
| Voltage reduction adapter | 134 |
| W | |
| Windows insulating mat | 70 |
| Winter and summer testing | 7 |



The new service innovation Mercedes-Benz Uptime

With intelligent networking of vehicles, Mercedes-Benz Service and your shipping company, Mercedes-Benz Uptime is setting new benchmarks. This enables significantly increased predictability of workshop visits and a greater availability of vehicles.



Your advantages at a glance:

- Avoiding immobility cases: preventing breakdowns and reducing organizational stress
- Efficient management of repairs and maintenance: minimizing workshop visits and non-operational times in the workshop
- Real-time support for repair measures: avoiding unnecessary workshop visits and repair costs

More information at:

www.mercedes-benz.com/uptime



On the information given in this catalog: Product changes may have been made following the last copy deadline of this catalog (02/2019). The manufacturer reserves the right to make changes to the design or form, to deviations in color and changes to the scope of supply during the delivery period if these changes or deviations can be deemed reasonable with respect to the buyer while taking into account the interests of the seller. If the seller or manufacturer uses characters or numbers to designate the order or object of purchase ordered, no rights may be derived from this.

www.mercedes-benz.com